

**EXPLANATION**

**Chemical types of water**

**GROUND WATER**

- Calcium bicarbonate (CaHCO<sub>3</sub>)
- Calcium sodium bicarbonate (CaNaHCO<sub>3</sub>)
- Calcium magnesium bicarbonate (CaMgHCO<sub>3</sub>)
- Sodium bicarbonate (NaHCO<sub>3</sub>)
- Sodium calcium bicarbonate (NaCaHCO<sub>3</sub>)
- Sodium chloride (NaCl)
- Variable ionic predominance (Transitional)
- Unknown

**SURFACE WATER**

BELOW FRIANT: Identification of sampling site 1961-65. Period of record. Range of dissolved solids, in milligrams per liter.

**Barograph**

Ten or more analyses available for sampling site indicated. Each column indicates a chemical type of surface water; the patterned part of each column indicates the percentage of occurrence of that chemical type for all the analyses for the period of record stated; patterns match map patterns; chemical types with less than 5 percent occurrence are omitted.

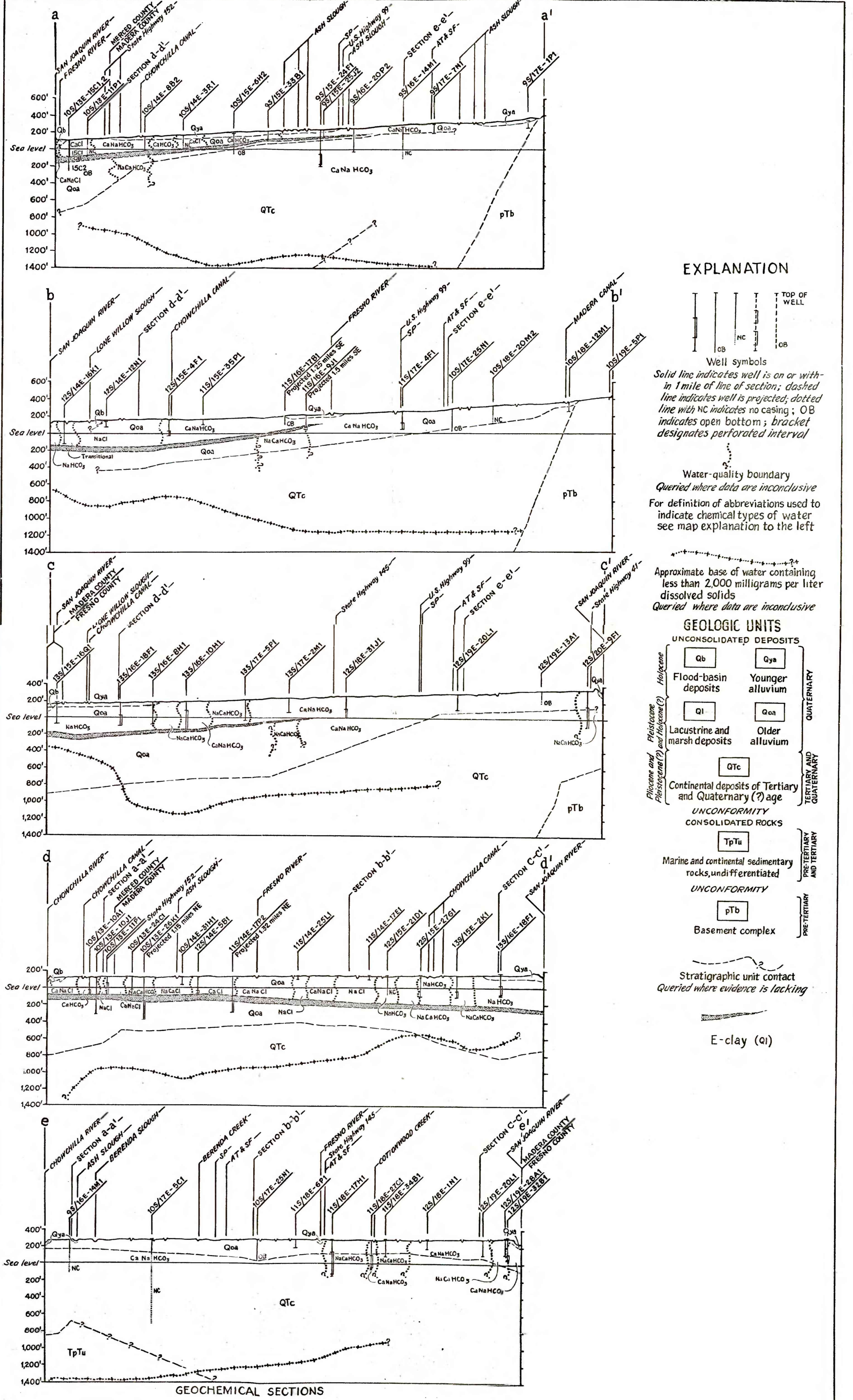
**Well**

Solid symbol indicates well appears on a chemical section; open circle indicates well used for areal control but does not appear on sections; upper figure beside symbol is well identification; lower figure indicates total dissolved solids, in milligrams per liter.

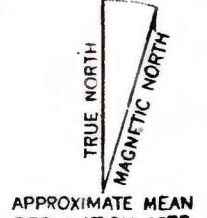
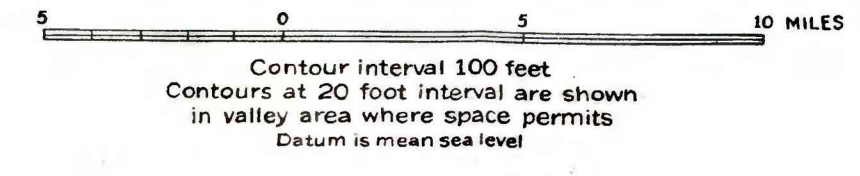
**Surface-water sampling site**

**Line of chemical section**

**Boundary of Madera area**



Base from U.S. Geological Survey, Central Valley, California, Delta Area, 1958. 1:250,000



MAPS SHOWING CHEMICAL TYPES OF SURFACE AND GROUND WATER, GEOCHEMICAL SECTIONS, AND CONTOURS ON BASE OF FRESH WATER, MADERA AREA, SAN JOAQUIN VALLEY, CALIFORNIA