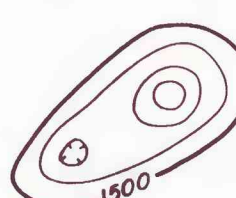


EXPLANATION



Magnetic contours
Showing total intensity magnetic field
of the earth in gammas relative to
arbitrary datum. Hachured to indicate
closed areas of lower magnetic intensity.

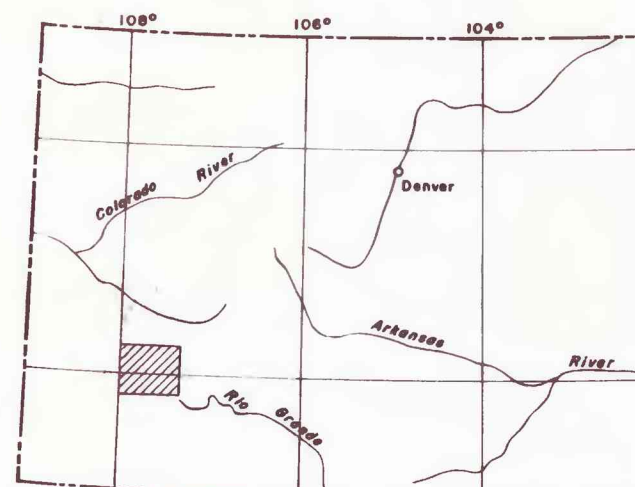
T_{1950}
Location of measured maximum or minimum
intensity within closed high or closed low

Flight path
Showing location and spacing of data

Approximate boundary of the Uncompahgre Primitive Area
From U.S. Forest Service, January 1966

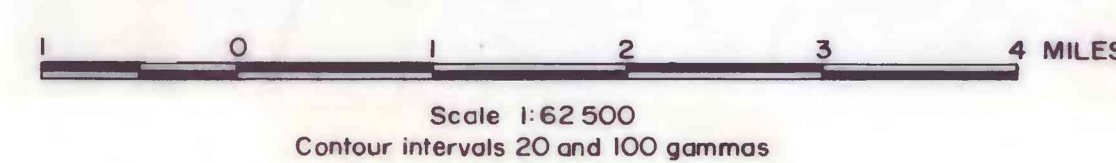
Approximate boundary of additional study areas
From U.S. Forest Service, January 1966

G
Anomaly discussed in text
*ss
Collection site of rock sample
for magnetic properties and density measurements



INDEX MAP OF COLORADO SHOWING AREA OF THIS REPORT

FIGURE 2 - PRELIMINARY AEROMAGNETIC AND MEASURED SAMPLE LOCALITIES MAP OF THE UNCOMPAHGRE PRIMITIVE AREA, COLORADO



Aeromagnetic survey flown and compiled
by the U.S. Geological Survey, June of
1969. Contour interval 20 and 100 gammas.