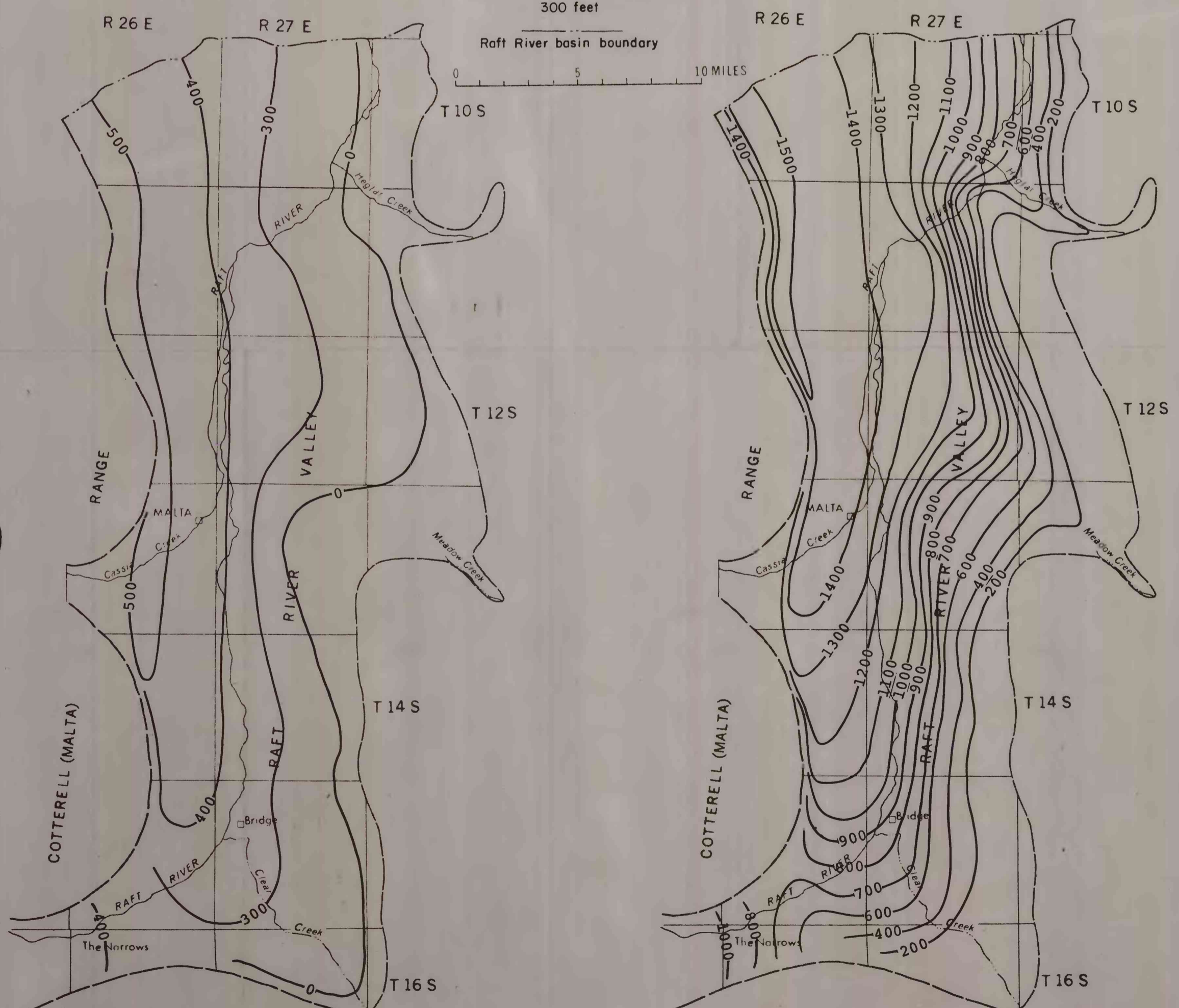


MOST PERMEABLE DEPOSITS IN THE COMBINED ALLUVIUM, BASALT, AND RAFT FORMATION

EXPLANATION
Approximate boundary of the principal aquifers in the Raft River valley subbasin
— 100 —
Line of approximate equal thickness
Contour intervals 50, 100, 200, and 300 feet

COMBINED ALLUVIUM, BASALT, AND RAFT FORMATION WHERE THESE CONSTITUTE PRINCIPAL AQUIFERS



UPPER UNIT OF THE SALT LAKE FORMATION

Base from U.S. Geological Survey
Pocatello, 1954

ALL PRINCIPAL WATER-BEARING DEPOSITS IN THE RAFT RIVER VALLEY SUBBASIN

FIGURE 8.--Approximate thickness of water-bearing units in the Raft River valley subbasin.