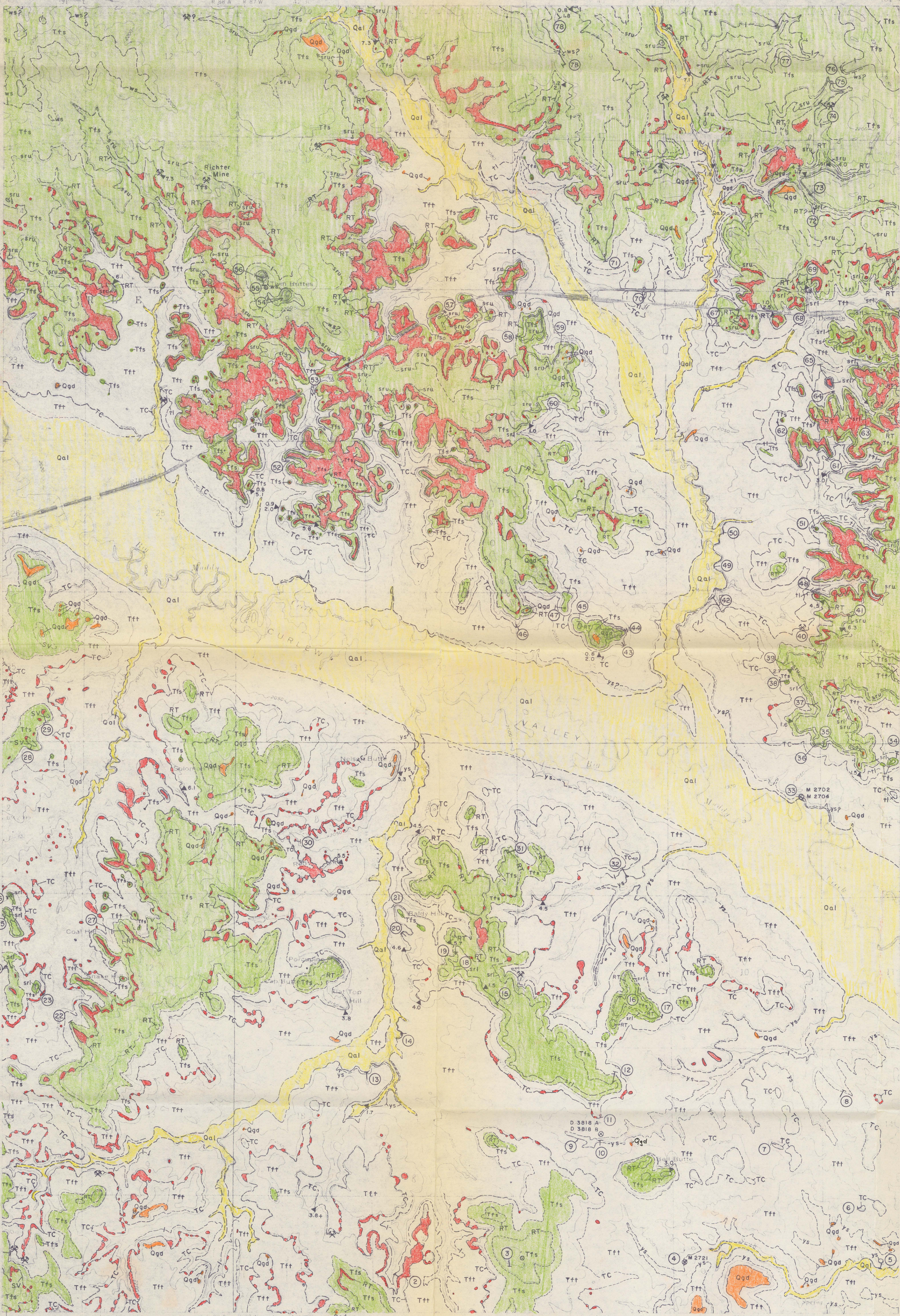


UNITED STATES  
DEPARTMENT OF THE INTERIOR  
GEOLOGICAL SURVEY

DENGATE QUADRANGLE  
NORTH DAKOTA - MORTON CO.  
7.5 MINUTE SERIES (TOPOGRAPHIC)



EXPLANATION

Pleistocene-Holocene		Qal	QUATERNARY
		Alluvium	
		Qgd	
		Glacial drift	
Paleocene		Tfs	TERTIARY
		Tft	
		Fort Union Formation	
		Tfs, Sentinel Butte Member	
		Tft, Tongue River Member	

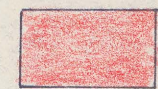
Contact

Dashed where approximately located; short dashed where inferred

TC 0.8 5.1

Lignite or marker bed

Dashed where approximately located; short dashed where inferred. Letter(s) indicate name of lignite or marker bed. Thickness of coal, in feet, measured at triangle. Where two beus are present, the younger bed is at top



Clinker

Rocks of the Fort Union Formation baked and fused by the in situ combustion of lignite

18 65

Location of stratigraphic section shown on plates 2 and 3. Line of section indicated where section is long



Open pit lignite mine, inactive



Fossil locality

U.S. Geological Survey fossil collection; D, pollen locality, Denver catalogue; M, mollusk locality, Menlo Park catalogue



Drill hole

This report is preliminary and has not been edited or reviewed for conformity with U.S. Geological Survey standards or nomenclature.

Base by U.S. Geological Survey, 1960

as part of the Department of the Interior program for the development of the Missouri River basin

Topography from aerial photographs by photogrammetric methods. Aerial photographs taken 1958. Relief shaded in brown. Polyconic projection. 1927 North American datum. 10,000-foot grid used on North Dakota. Contour interval 20 feet. 100-meter Universal Transverse Mercator grid lines shown 14° shown in blue. Fine red dashed line indicates selected fence and field lines where generally visible on aerial photographs. This information is for reference only.

SCALE 1:24 000

1/2 0 MILE

Geology mapped in 1965-66

FOR SALE BY U.S. GEOLOGICAL SURVEY, DENVER, COLORADO, OR WASHINGTON, D.C. AND BY THE STATE WATER CONSERVATION COMMISSION, BISMARCK, NORTH DAKOTA. A FOLDER DESCRIBING TOPOGRAPHIC MAPS AND SYMBOLS IS AVAILABLE ON REQUEST.

PRELIMINARY

GEOLOGIC MAP OF THE DENGATE QUADRANGLE, MORTON COUNTY, NORTH DAKOTA

By  
C.S. Venable Barclay  
1971

DENGATE, N. DAK.

1960