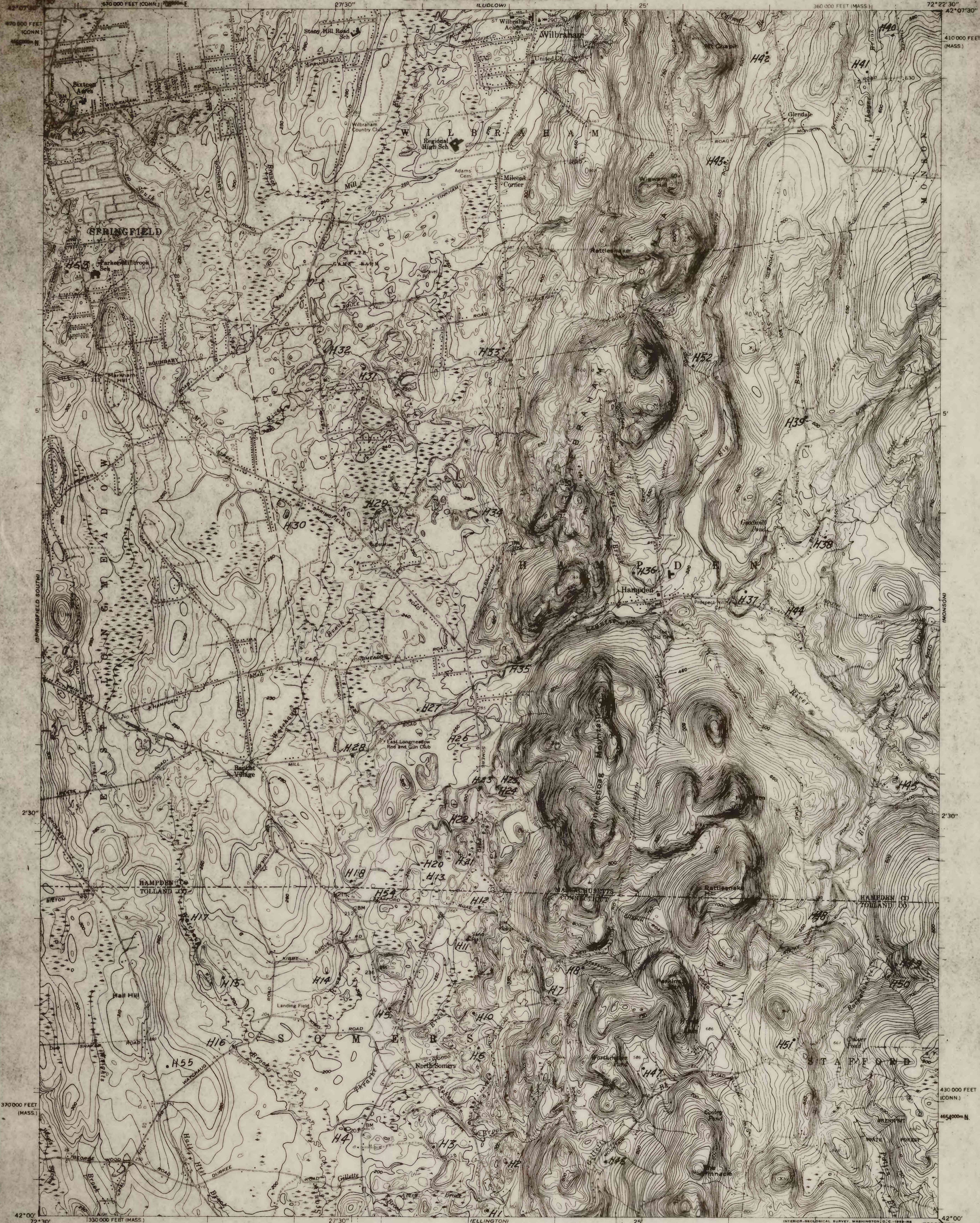


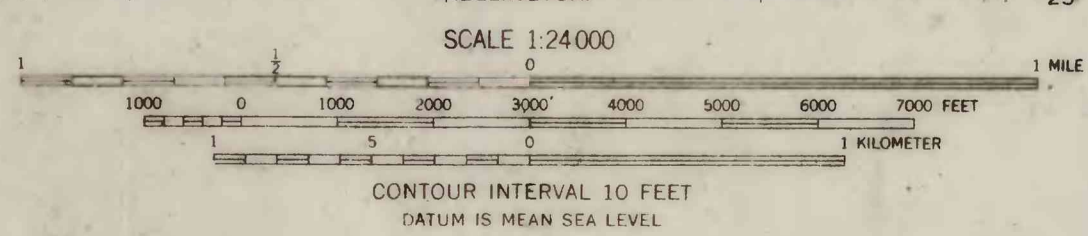
PREPARED IN COOPERATION WITH  
THE COMMONWEALTH OF MASSACHUSETTS  
DEPARTMENT OF PUBLIC WORKS  
AND  
THE STATE OF CONNECTICUT  
GEOLOGICAL AND NATURAL HISTORY SURVEY

OPEN FILE  
1971  
SHEET 2 OF 2  
HAMPDEN QUADRANGLE  
MASSACHUSETTS-CONNECTICUT  
7.5 MINUTE SERIES (TOPOGRAPHIC)

DEPARTMENT OF THE INTERIOR  
UNITED STATES GEOLOGICAL SURVEY

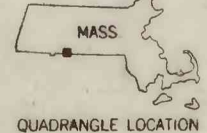


Mapped, edited, and published by the Geological Survey  
Control by USGS, USC&GS, Massachusetts Land and Harbor Commission,  
and Connecticut Geodetic Survey  
Topography by plane-table surveys 1938 and 1943. Revised 1958  
Polyconic projection. 1927 North American datum  
10,000-foot grids based on Massachusetts coordinate system,  
mainland zone, and Connecticut coordinate system  
1000-meter Universal Transverse Mercator grid ticks,  
zone 18, shown in blue  
Red tint indicates area in which only  
landmark buildings are shown



ANALYTICAL DATA FROM SAMPLES OF SURFICIAL DEPOSITS  
HAMPDEN QUADRANGLE, MASSACHUSETTS-CONNECTICUT  
BY  
ROGER B. COLTON

See also R. B. Colton and M. J. Mallory,  
1969, Map showing location of sand,  
gravel and till pits and quarries in  
the Hampden quadrangle, Massachusetts-  
Connecticut: U.S. Geol. Survey Open-  
File Report, 53 p. data, 1 map



HAMPDEN, MASS.-CONN.  
N4200-W7222.5/7.5

1958

Massachusetts (Hampden quad). Surficial. 1:24,000. 1971.