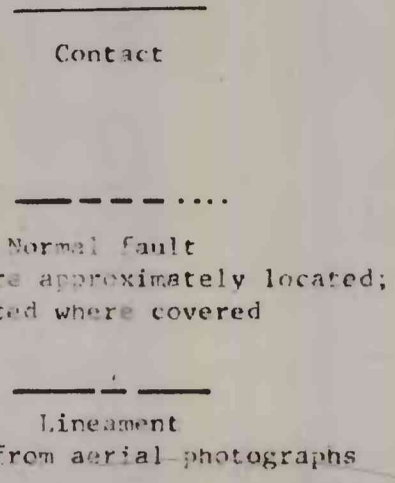
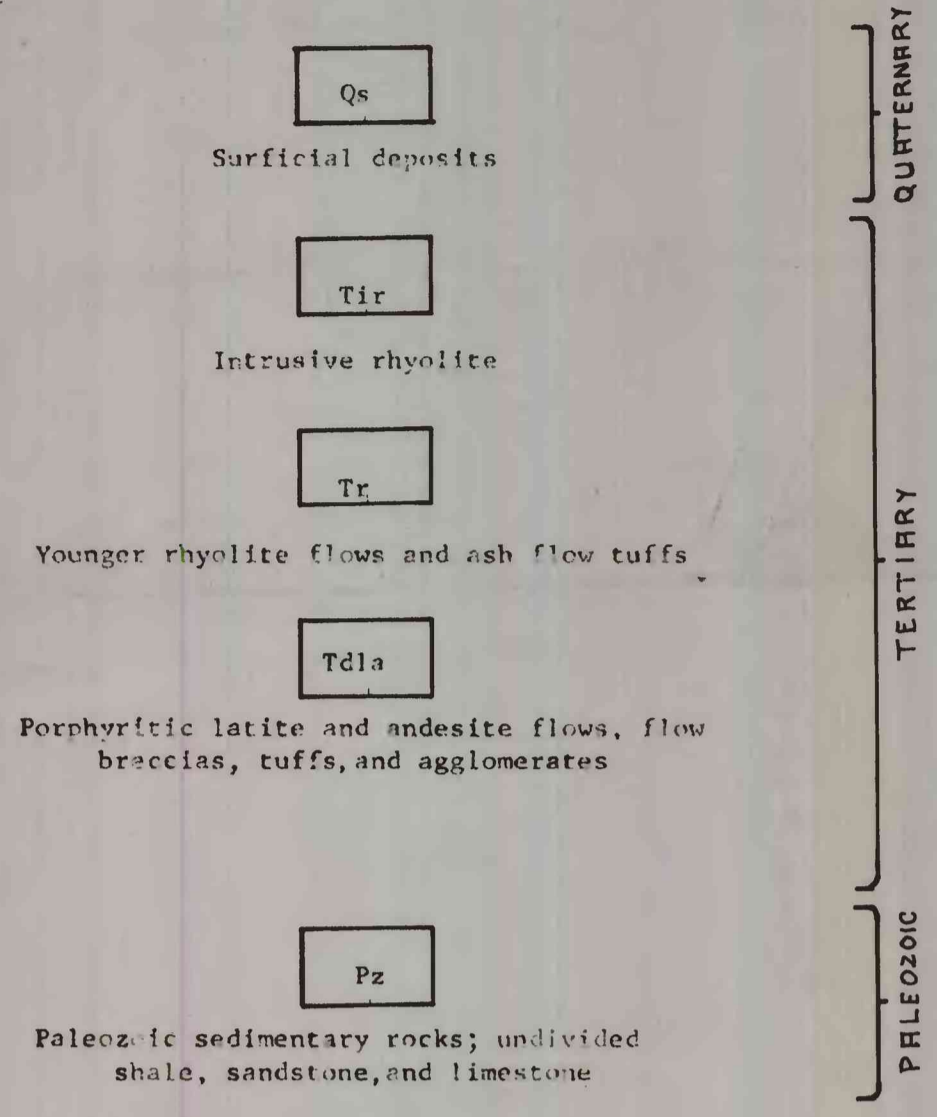


DEPARTMENT OF THE INTERIOR  
UNITED STATES GEOLOGICAL SURVEY

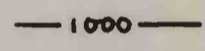
EXPLANATION



Metal contents of three sample types (<80, M-1, NM-1) are given at each sample location. The <80 sample consists of material finer than 0.177 mm sieved from the total stream sediment. The other two sample types are portions of stream-sediment panned concentrates with a specific gravity higher than that of bromoform. The M-1 fraction is that portion of such material not magnetic at 0.1 ampere, but magnetic at a 1.0-ampere setting on a Frantz Isodynamic Separator (forward slope 25°, side slope 15°). The portion that is not magnetic at a 1.0-ampere setting is labeled NM-1.



showing spectrographically determined lanthanum and silver contents in parts per million. Numbers without brackets give lanthanum values. Top number, lanthanum value of the <80 fraction; middle number, lanthanum value of the M-1 fraction; bottom number, lanthanum value of the NM-1 fraction. L, lanthanum detected but below 20 parts per million. N, lanthanum value below the detection limit. Dash, missing value. Numbers in brackets give silver values of the three fractions in the above mentioned sequence. S, silver detected but below 0.5 parts per million. N, silver value below detection limit. Brackets are found only near sample locations at which silver was detected spectrographically. Filled circle indicates sample location at which silver was detected in any one of the three sample types.



approximately delineating areas containing at least 1000 parts per million lanthanum in the M-1 fraction of stream sediments

This map is preliminary and has not been edited or reviewed for conformity with U. S. Geological Survey standards.

HISTOGRAMS SHOWING LANTHANUM AND SILVER DISTRIBUTION

