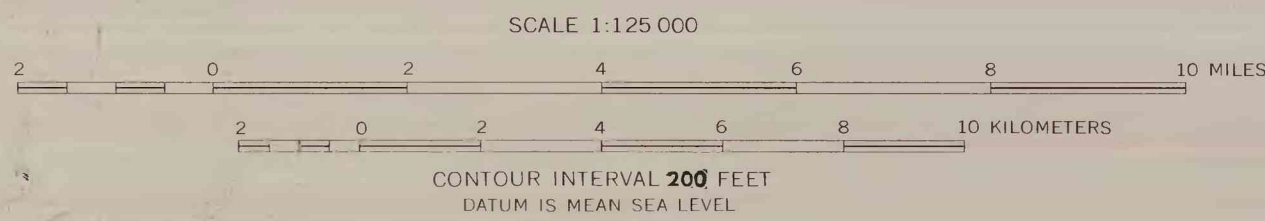




Geology by Reuben Kachadoorian, 1969,
Reuben Kachadoorian and W. E. Yeend, 1970.
Bedrock geology from W. P. Brosge and H. N.
Reiser, 1964 Progress Map of the Geology of
the Wiseman Quadrangle, Alaska. U. S.
Geological Survey Open-File Report.

Base from U. S. Geological Survey 1:250,000
series, 1956

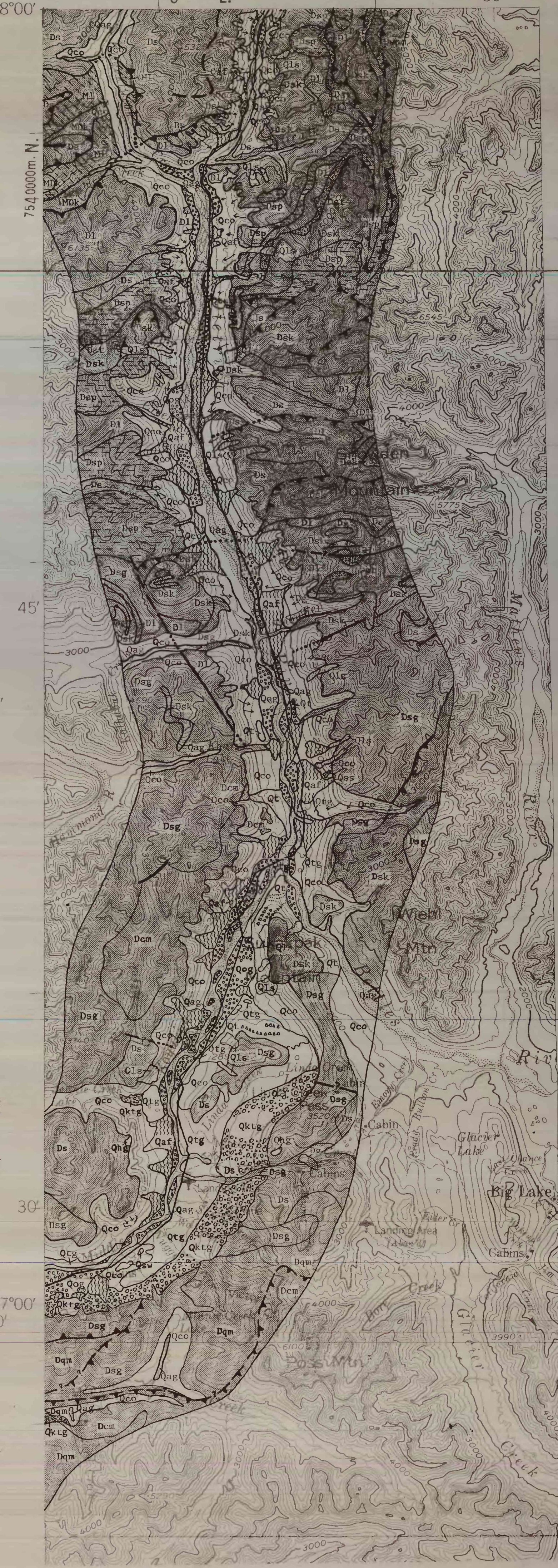
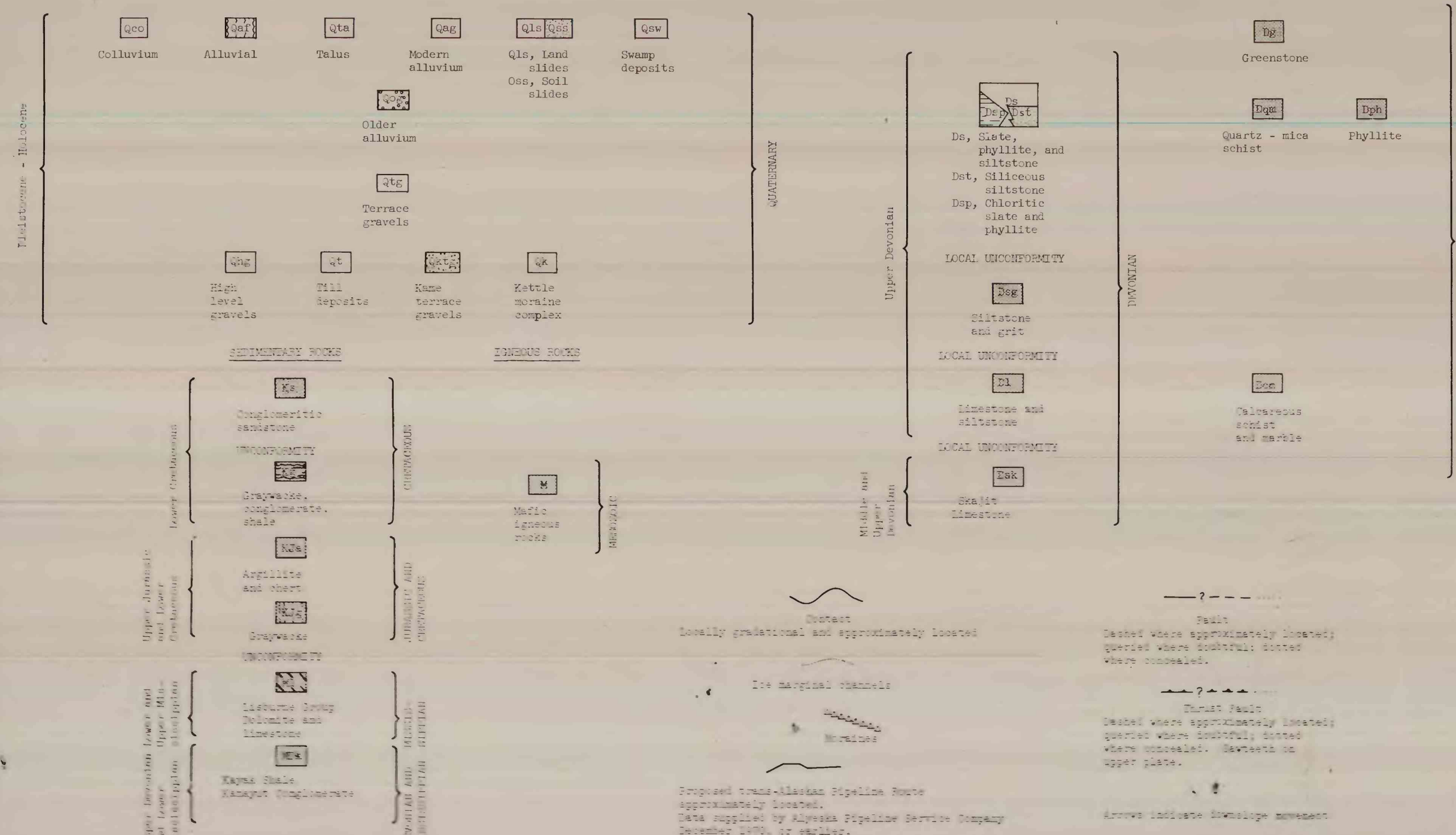
Bedrock units shaded.



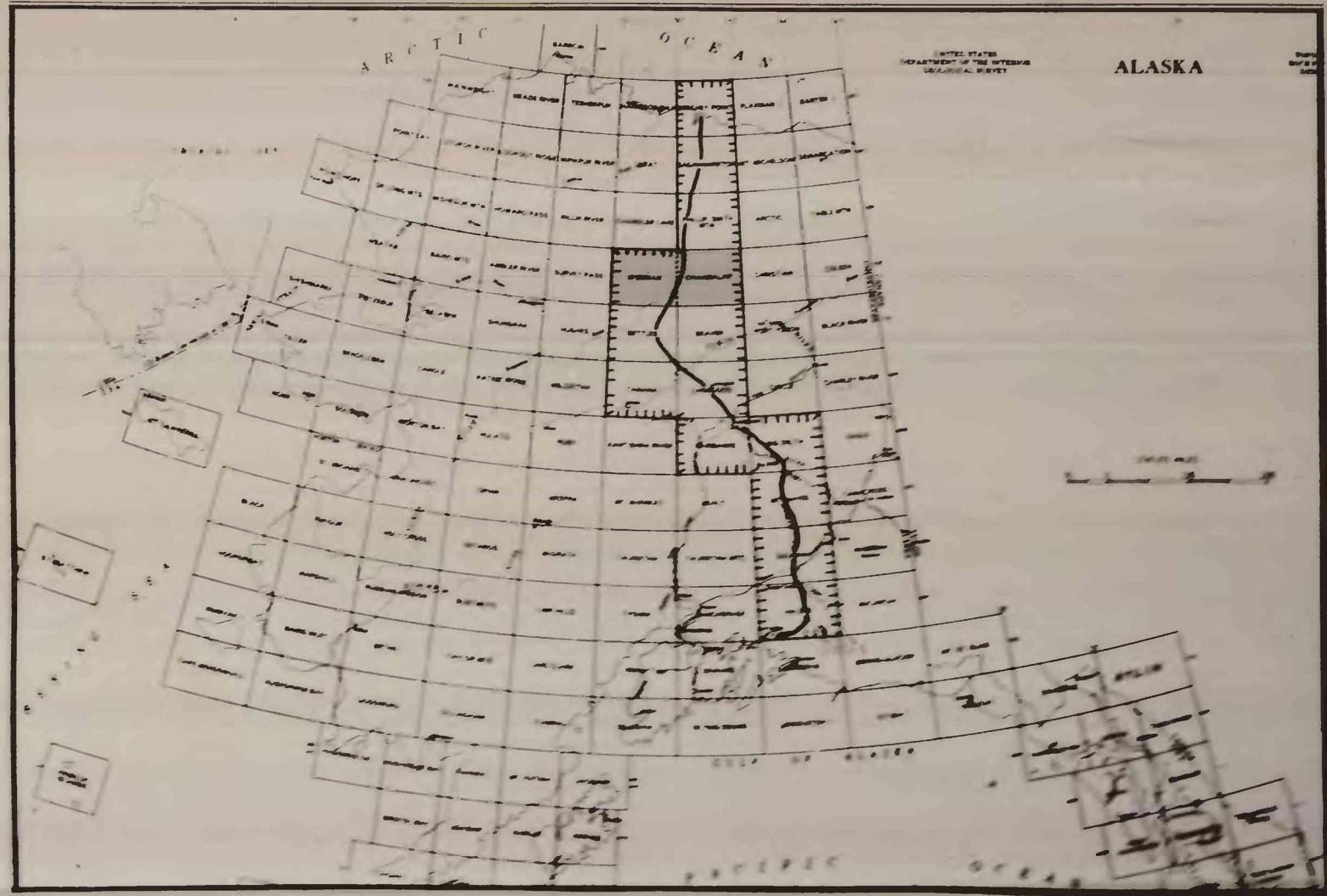
EXPLANATION

UNCONSOLIDATED DEPOSITS

SEDIMENTARY AND METAMORPHIC ROCKS



Geology by Reuben Kachadoorian, 1969,
Reuben Kachadoorian and W. E. Yeend, 1970.
Bedrock geology from W. P. Brosge and H. N.
Reiser, 1964 Geologic Map and Section of
the Chandalar Quadrangle, Alaska. U. S.
Geological Survey Map I-375



PRELIMINARY ENGINEERING GEOLOGIC MAPS OF THE PROPOSED TRANS-ALASKA PIPELINE ROUTE,
WISEMAN AND CHANDALAR QUADRANGLES

Compiled by Reuben Kachadoorian 1971

This map is preliminary and does not
warrant any warranty for conformity with
U.S. Geological Survey standards
and nomenclature.