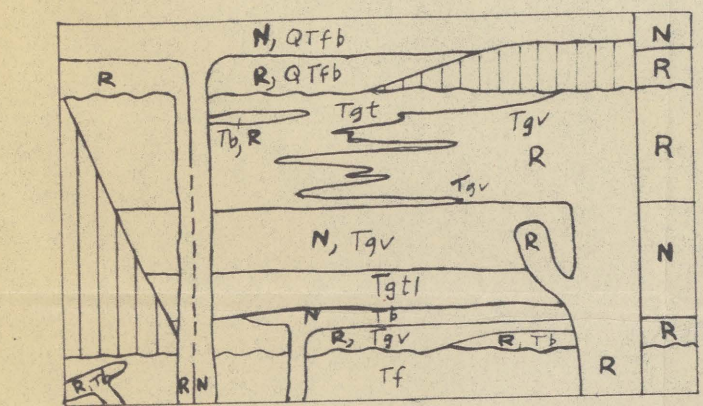


Index map showing location of map area (stippled)  
Geologic mapping in nearby areas as follows: Furnace Creek borate area, (McAllister, 1970); Death Valley area (Hunt and Moberg, 1963); Ash Meadows quadrangle, (Denny and Brewes, 1965); Funeral Peak quadrangle, (Drewes, 1965)



Diagrammatic restored section of the volcanic sequence showing remnant magnetic polarities older than the Gauss normal polarity epoch  
N, normal polarity  
R, reversed polarity  
Vertical pattern, range of hiatus

Preliminary base by U.S. Geological Survey

SCALE 1:24,000  
2 MILES  
CONTOUR INTERVAL 40 FEET  
DATUM IS MEAN SEA LEVEL

PRELIMINARY GEOLOGIC MAP OF THE AMARGOSA VALLEY BORATE AREA, INYO COUNTY, CALIFORNIA  
by  
James F. McAllister  
1971

U.S. Geological Survey  
OPEN FILE REPORT  
This map is preliminary and has not been edited or reviewed for conformity with Geological Survey standards or nomenclature.

California (Amargosa Valley borate area). Geol. 1:24,000. 1971.  
cap. 1.

M(200)  
R290  
no. 71-186  
C-1