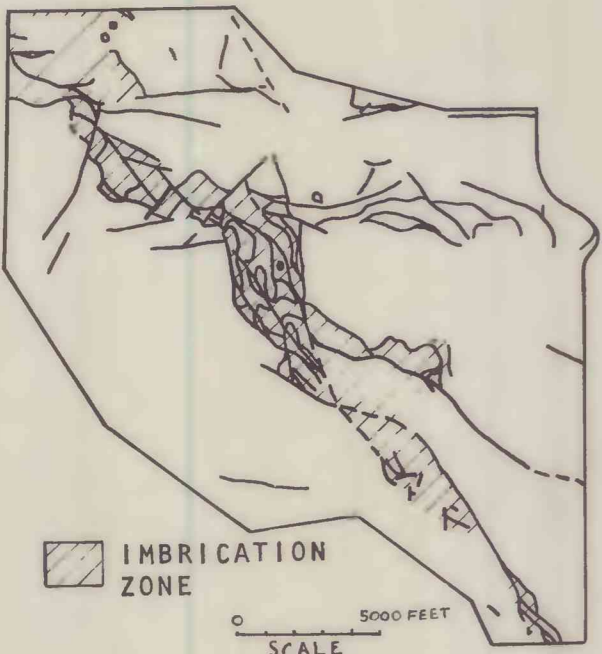
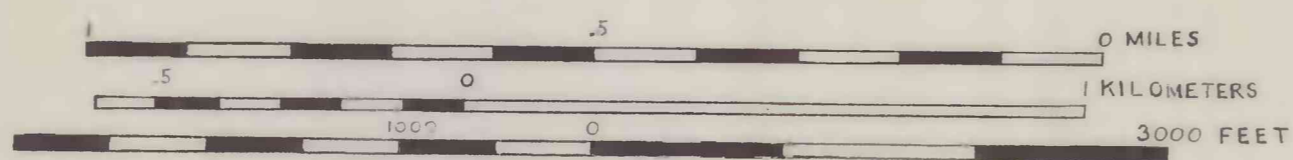


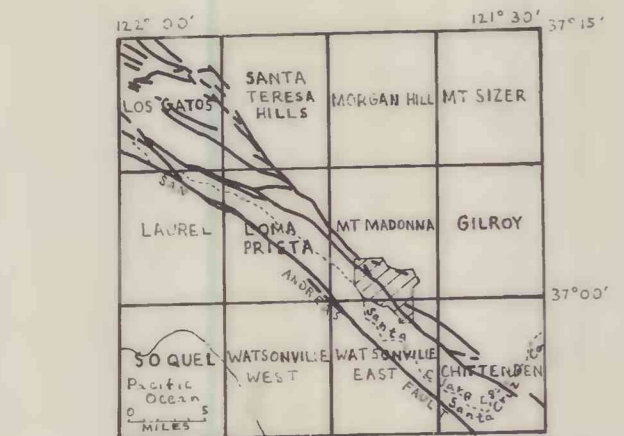
FAULT MAP SHOWING SARGENT FAULT ZONE OF IMBRICATION



SCALE 1:12,000

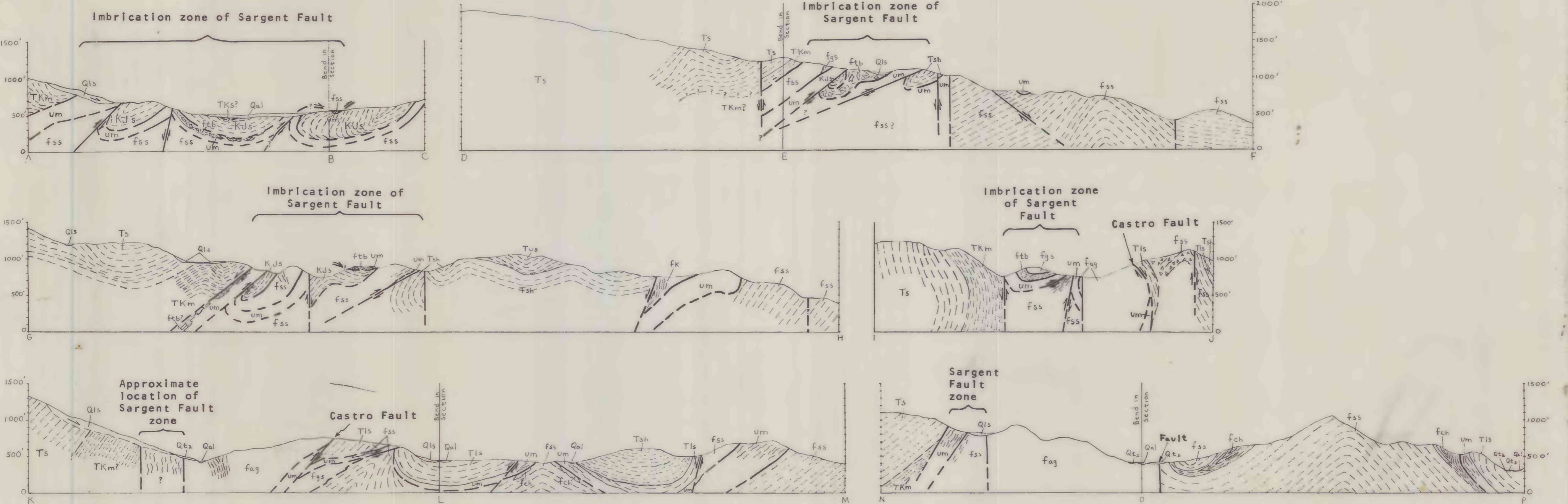


CONTOUR INTERVALS:
MOUNT MADONNA QUADRANGLE, 40 FEET
WATSONVILLE EAST QUADRANGLE, 20 FEET
DATUM IS MEAN SEA LEVEL



INDEX MAP OF U. S. GEOLOGICAL SURVEY 7 1/2' QUADRANGLES AND AREA COVERED BY GEOLOGIC MAP. GEOLOGY FROM ALLEN (1946), JENNINGS (1958), AND ROGERS (1966).

Base enlarged from U.S. Geological Survey topographic series; 1:24,000, Mount Madonna, Watsonville East, California, 1955.



GEOLOGIC MAP OF THE SARGENT FAULT ZONE IN THE VICINITY OF MOUNT MADONNA, SANTA CLARA COUNTY, CALIFORNIA

by

Robert J. McLaughlin

1971

This map is preliminary and has not been reviewed for conformity with U.S. Geological Survey standards and nomenclature.