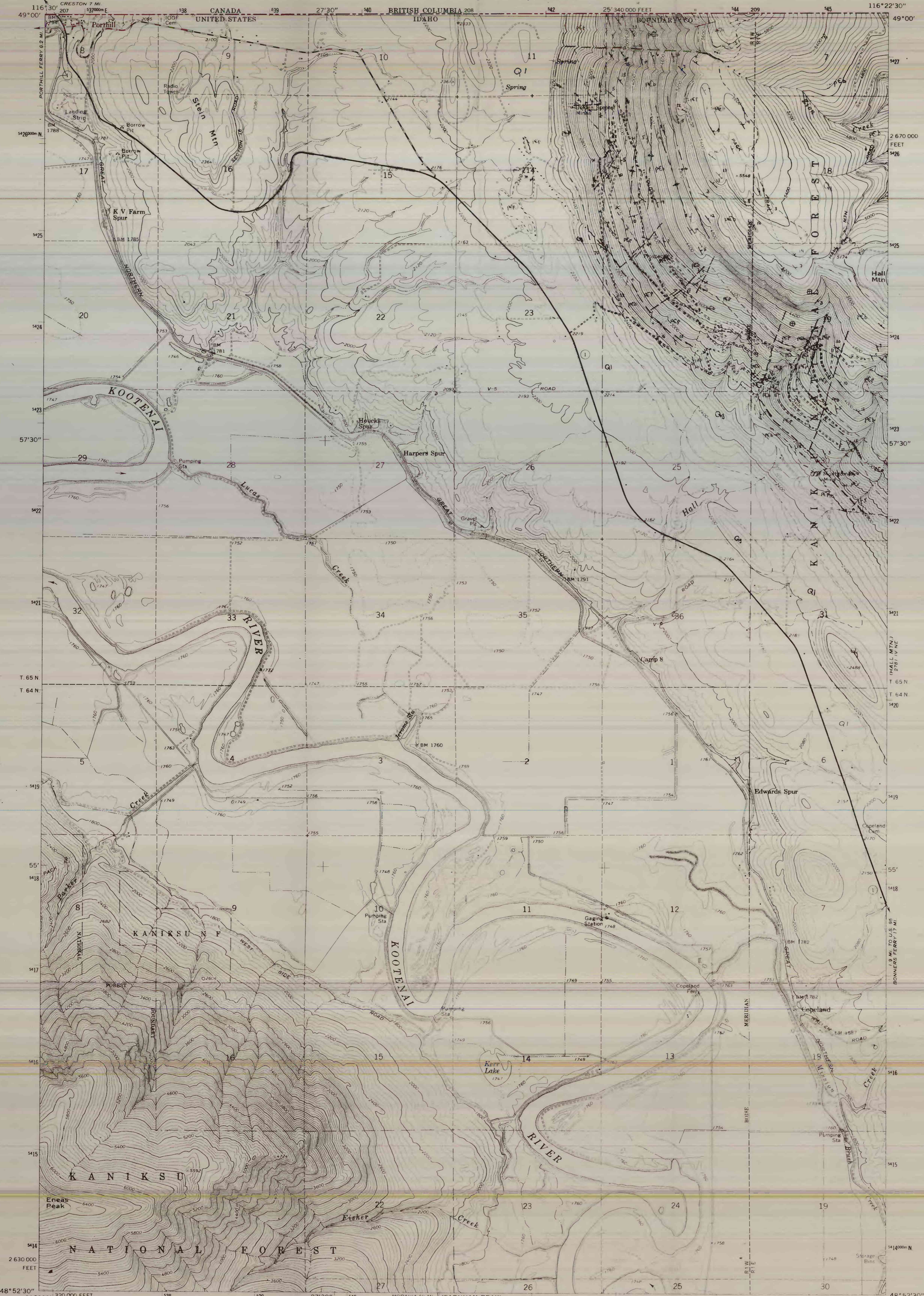


71-267

DEPARTMENT OF THE INTERIOR  
UNITED STATES GEOLOGICAL SURVEY



Base by U.S. Geological Survey, 1965

SCALE 1:24,000

CONTOUR INTERVAL 40 FEET  
DOTTED LINES REPRESENT 10-FOOT CONTOURS  
DATUM IS MEAN SEA LEVEL

UTM GRID AND 1965 MAGNETIC NORTH  
DECLINATION AT CENTER OF SHEET

QUADRANGLE LOCATION

Geology mapped in 1970

GEOLOGIC MAP OF THE HALL MOUNTAIN AREA IN THE COPELAND QUADRANGLE, BOUNDARY COUNTY, IDAHO

By  
Mortimer H. Staatz

This map is preliminary and has not been edited or reviewed for conformity with U.S. Geological Survey standards.