

MAILED, EDITED, AND PUBLISHED BY THE GEOLOGICAL SURVEY  
DRAWN BY H. J. AND J. S. BARNES

GRAVITY DATUM FROM BARNES (OPEN FILE, 1968, 1972)  
2.67 g/cc

GRAVITY SURVEYS PARTIALLY SUPPORTED  
BY U.S. ARMY TOPOCOM, PROJECT 3-68

STATION  
LOCATION  
7  
0  
HJ18

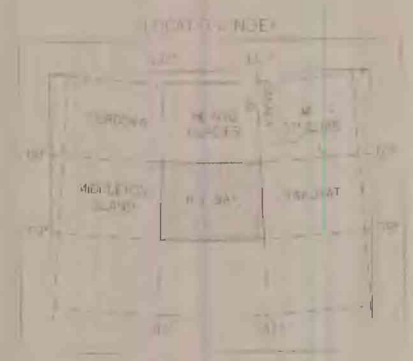
— 30 —  
GENERALIZED BOUGUER ANOMALY CONTOURS

This map is preliminary and has not  
been reviewed for conformity with  
U.S. Geological Survey standards  
and nomenclature.

SCALE 1:250,000

# USGS ALASKAN GRAVITY DATA

BY DAVID F. BARNES  
1972



GRAVITY MEASUREMENTS 1968 & 1969

ROAD CLASSIFICATION  
UNIMPROVED DIRT

USGS GRAVITY DATA  
ICY BAY, ALASKA  
1961