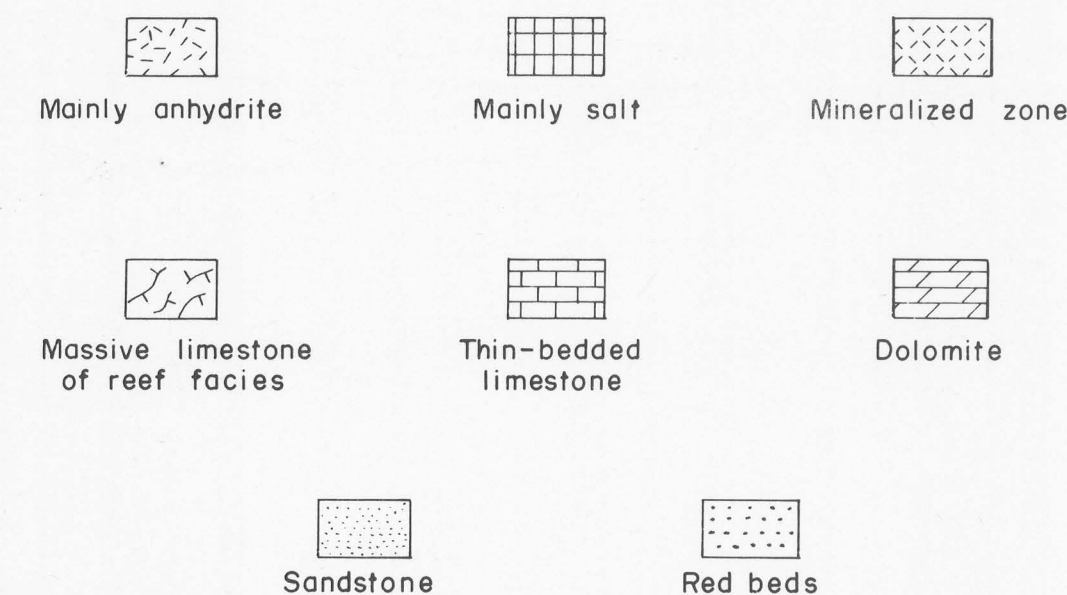
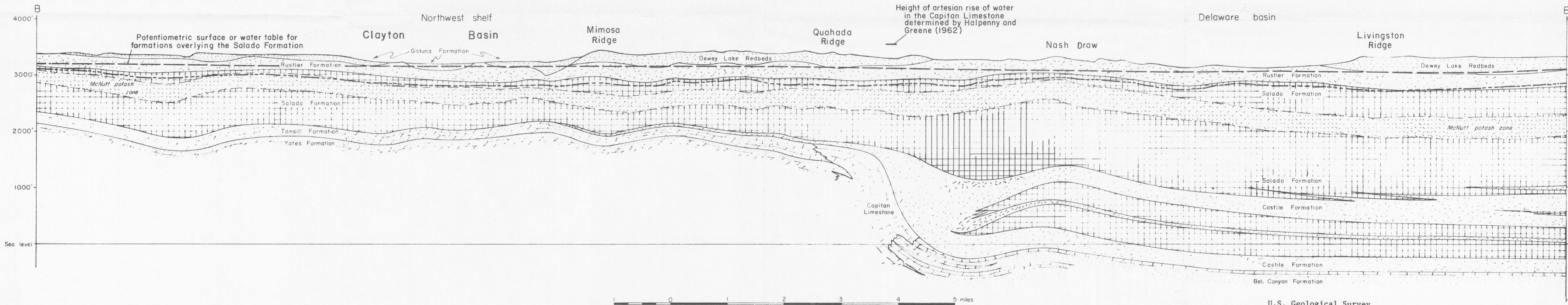
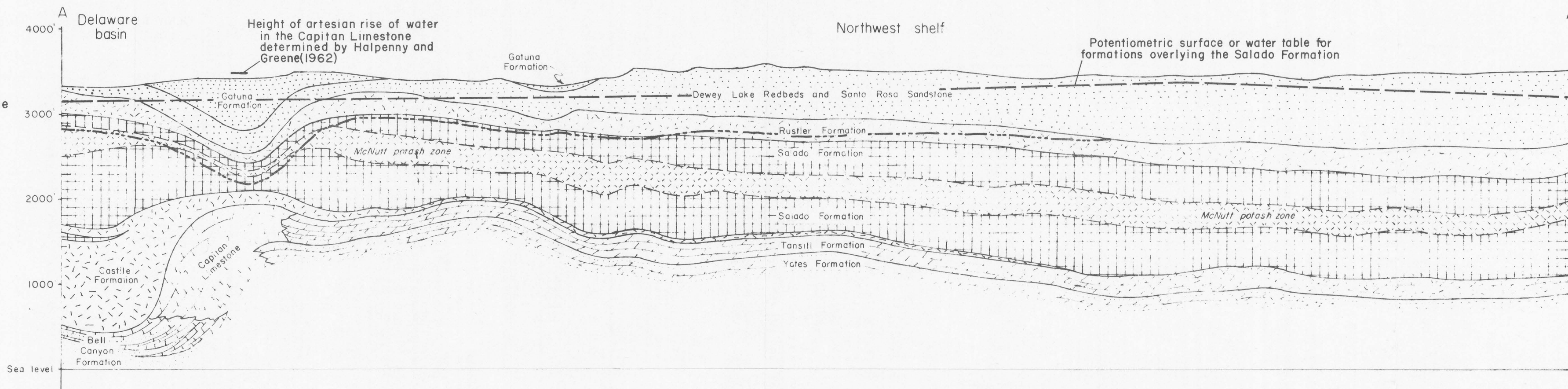


EXPLANATION



Base of leached zone
Marks maximum depth of penetration by groundwater, and separates salt-free, gypsum-bearing rock from salt-bearing, gypsum-free rock.



U.S. Geological Survey
OPEN FILE REPORT
This illustration is preliminary and has not been edited or reviewed for conformity with Geological Survey standards or nomenclature.
Geology by C. L. Jones
Hydrology by M.E. Cooley, 1972

FIGURE 4A. -- GEOLOGIC STRUCTURE CROSS SECTIONS A - A' AND B - B'. TRACE OF SECTIONS SHOWN ON FIGURE 4.