

FLOOD OF JUNE 1972
CANISTEO RIVER AT CANISTEO, NEW YORK
 By W.N. Embree and L.A. Swallow

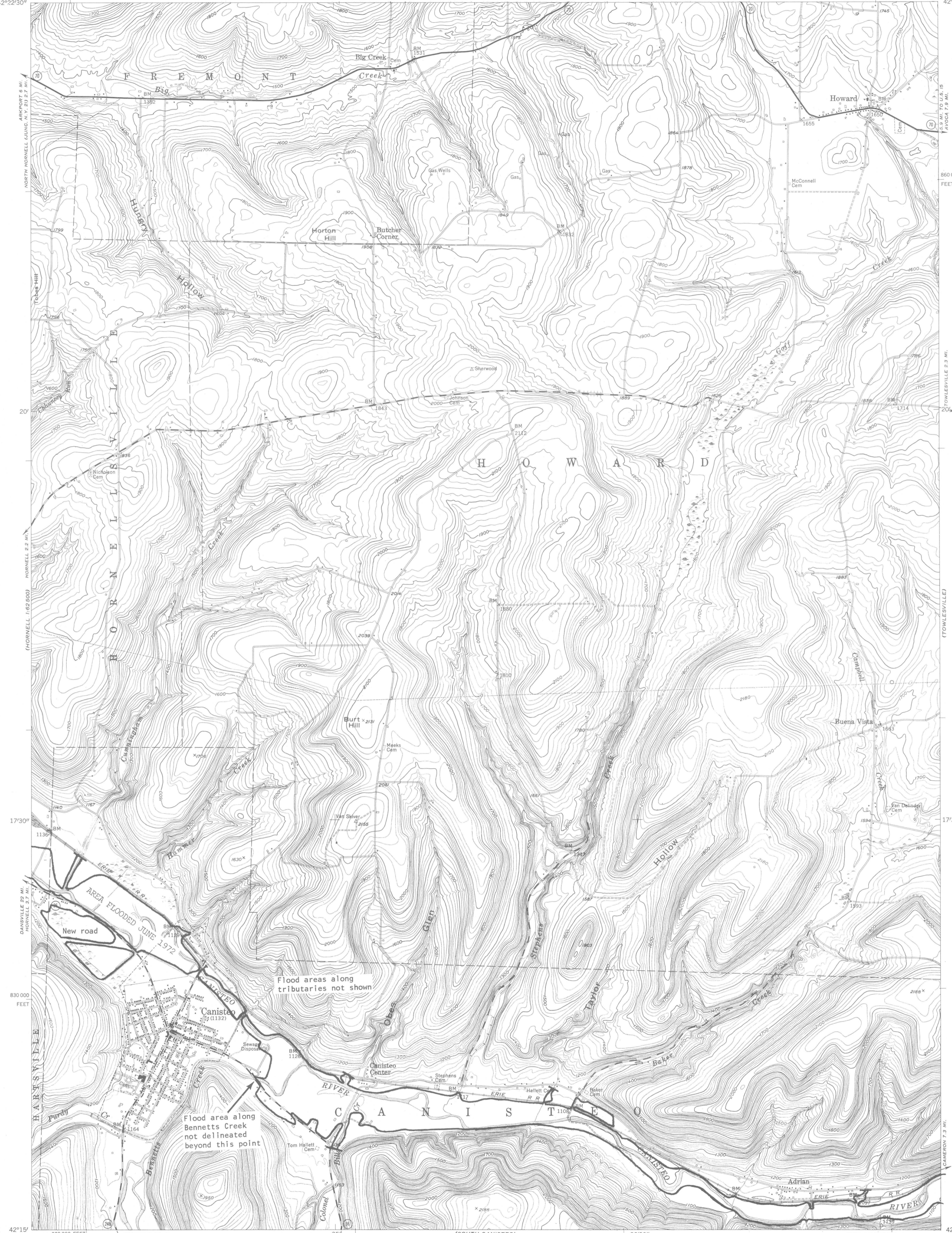
CANISTEO QUADRANGLE
 NEW YORK—STEBEN CO.
 7.5 MINUTE SERIES (TOPOGRAPHIC)
 SE 1/4 HORNELL 15' QUADRANGLE

72-105
 (AVOCA)

UNITED STATES
 DEPARTMENT OF THE INTERIOR
 GEOLOGICAL SURVEY

77°37'30"
 42°22'30"

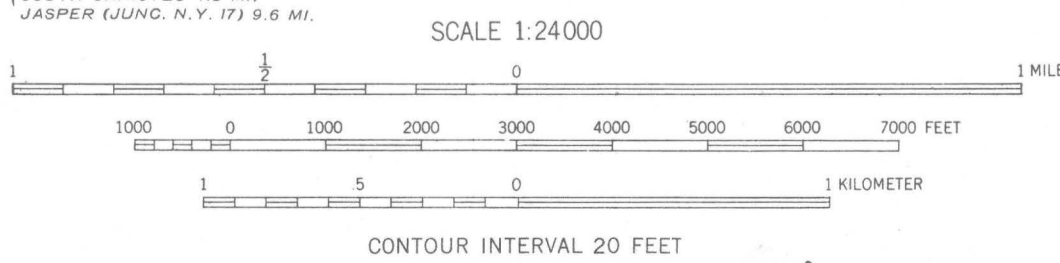
77°30"
 42°22'30"



In June 1972, tropical storm Agnes caused severe flooding in Pennsylvania and southern New York. The floods on many major streams were the highest known since the river valleys were settled. Maximum discharges were as much as twice the discharge of a 50-year flood. In southern New York, large areas in Corning, Elmira, Wellsville, Salamanca, and in many smaller communities were inundated to depths of several feet. Levels of all of the Finger Lakes were higher than any previously recorded, and extensive flooding of lakeside properties resulted.

The extent of flooding shown on the map was delineated by the U.S. Geological Survey from aerial photography and limited field surveys.

The investigation was conducted in cooperation with the State of New York and the U.S. Army Corps of Engineers.



SCALE 1:24,000
 CONTOUR INTERVAL 20 FEET
 1972 New York (Canisteo quad.) Floods. 1:24,000. 1972.
 cap. 1.

EXPLANATION
 — Boundary of June 1972 flood
 — Flood boundaries delineated from aerial photography and field surveys.



CANISTEO, N. Y.
 Base by U. S. Geological Survey
 1954

OPEN-FILE MAP

DEC 6 1972
 U.S. GEOLOGICAL SURVEY
 WASHINGTON
 LIBRARY

**M(200)
 R2901**
 no. 72-105
 C.1

LIBRARY - RESTON
 3 1818 00261405 3