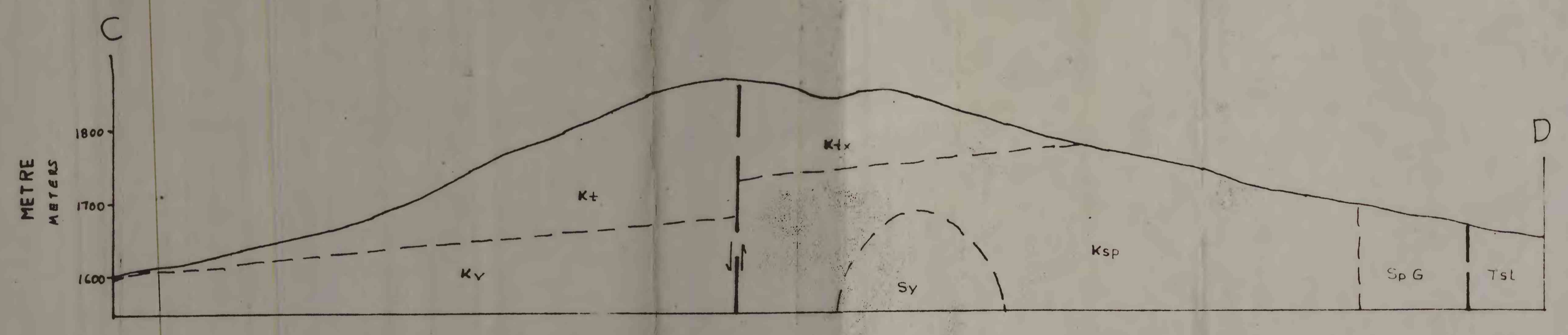
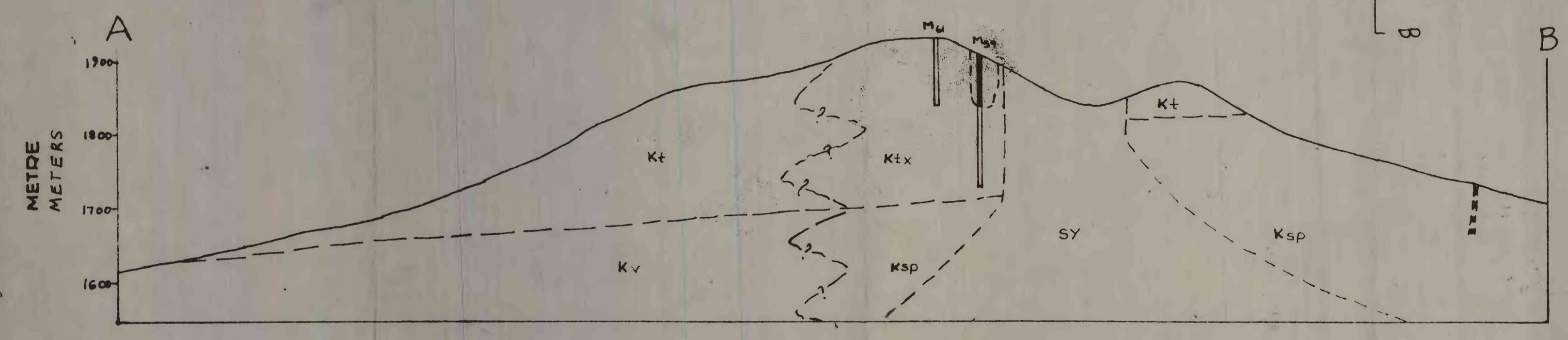
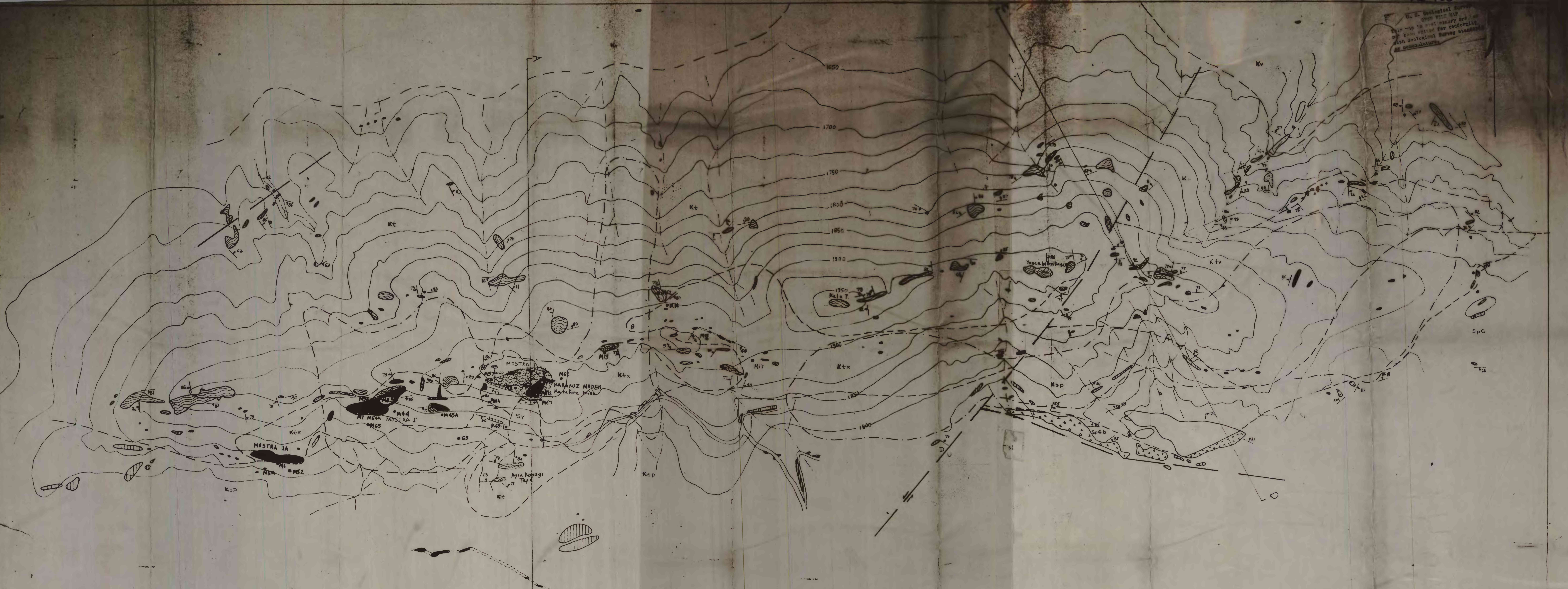


U.S. Geological Survey
This map is not ready for
publication. It is intended for
reference only. It is not
to be used for construction
or other purposes.



İZAHAT - EXPLANATION

- SEDİMANTER, VOLKANİK ve METAMORFİK KAYAÇLAR**
SEDIMENTARY, VOLCANIC AND METAMORPHIC ROCKS
- KIRMIZI TABAKALAR (KONGLOMERA, KUMTAŞI, SEYL)
RED BEDS (CONGLOMERATE, SANDSTONE, SHALE)
 - DEMİR OKSİTLİ TRAKİT
IRON OXIDE TRACHYTE
 - TRAKİT
TRACHYTE
 - METASOMATİZE MAFİK KAYAÇLAR
METASOMATIZED MAFIC ROCKS
 - BAZALT TUF ANDEZİT VE LOKAL KALKYER
BAZALT TUFF, ANDESITE AND LOCAL LIMESTONE
- INTRUZİF KAYAÇLAR**
INTRUSIVE ROCKS
- ALTESE SERPANTİNİT (?) BİREKİ
ALTERED SERPENTINITE (?) BRECCIA
 - SERPANTİNİT, PERİDOTİT, GABRO
SERPENTINITE, PERIDOTITE, GABBRO
 - SİYENİT
SYENITE
- DEMİR MİNERALLERİ**
IRON MINERALS
- GÖZLÜK MASIF DEMİR OKSİTLERİ
VISIBLE MASSIVE IRON OXIDES

- MOSTRA
OUTCROP
 - TABAKA DOĞRULTU VE EĞİMİ
STRIKE AND DIP OF BEDS
 - YATIK DOĞRULTU VE EĞİMİ
STRIKE AND DIP OF FRACTURES
 - KONTAK
CONTACT
 - FAY
FAULT
 - TOPOĞRAFİK KONTUR (YÜKSEKLİKLER METRE OLURKEN)
TOPOGRAPHIC CONTOUR (HEIGHTS IN METERS)
 - SENKİNAL BİŞENİ
SINKHOLE
 - ELHAS SONDAJ
DIAMOND DRILL HOLE
 - DENİZ ÜSTÜ BİŞİNTİLERİN SİNİRLİ
LIMIT OF 1000 METERS ABOVE SEA LEVEL
- NOT:** TOPOĞRAFİYA MTA NO 14278 1961 HARİTASINDAN ALINMIŞTIR.
TOPOGRAPHIC MAP FROM MTA NO 14278, 1961.
Note: BU HARİTADA ÖZEL NOKTALADIN MAKSİMUM HATA SINIRI 100 M. DİR.
MAXIMUM ERROR IN POSITION OF SPECIFIC POINTS ON THIS MAP IS 100 METERS.

ÖLÇEK - 1/5000

0 100 200 300 400 M

KONTURLAR ARASI 50 M. DİR.
CONTOUR INTERVAL 50 M.

ÇİZENLER - HERBERT S. JACOBSON (USGS) - RESAT BOĞAZ (MTA)

KARAKUZ MADEN SAHASI JEOLojİK HARİTA ve KESİTLERİ
GEOLOGIC MAP AND SECTIONS OF THE KARAKUZ MINE AREA