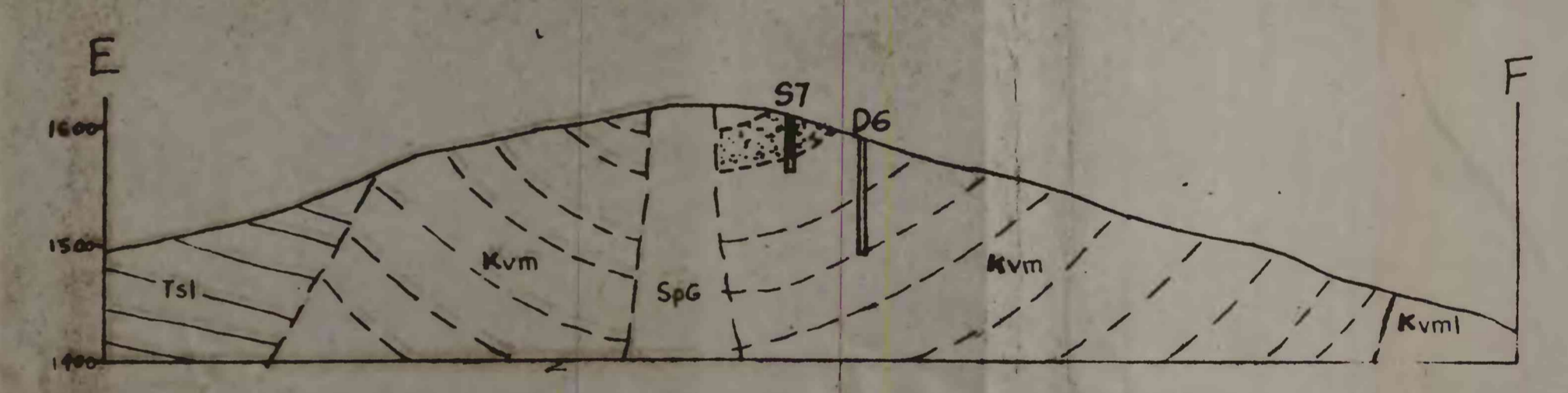
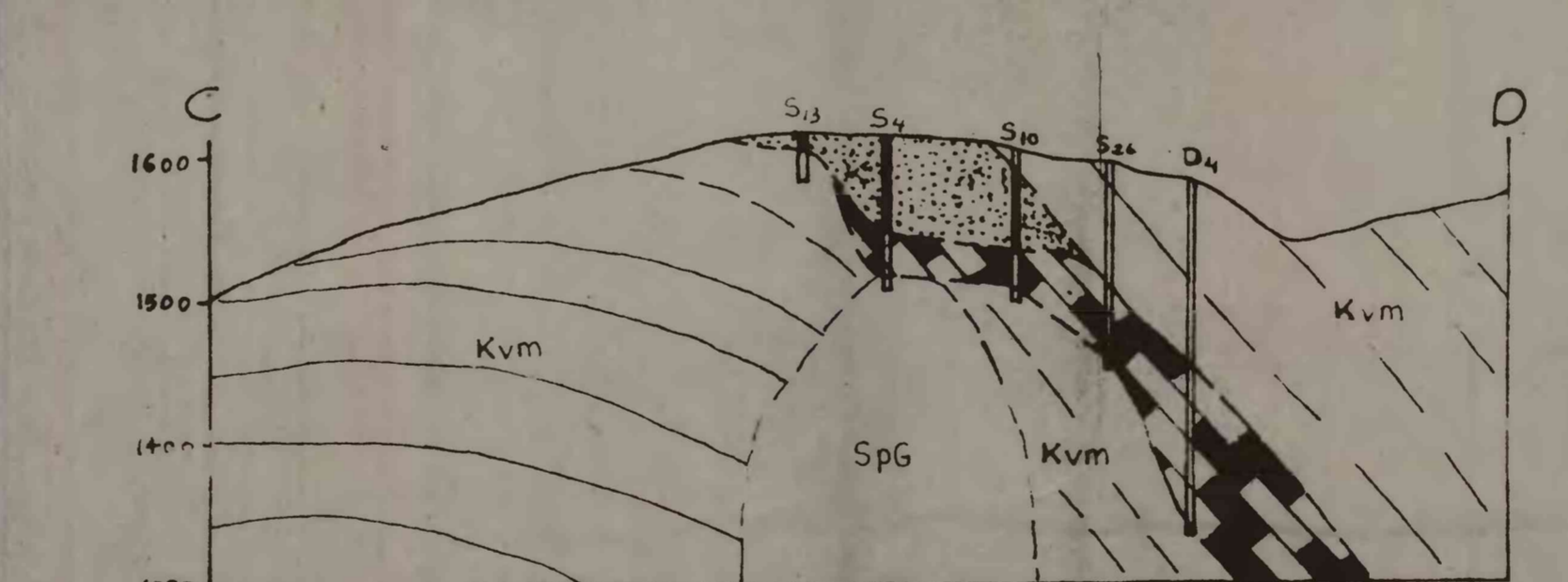
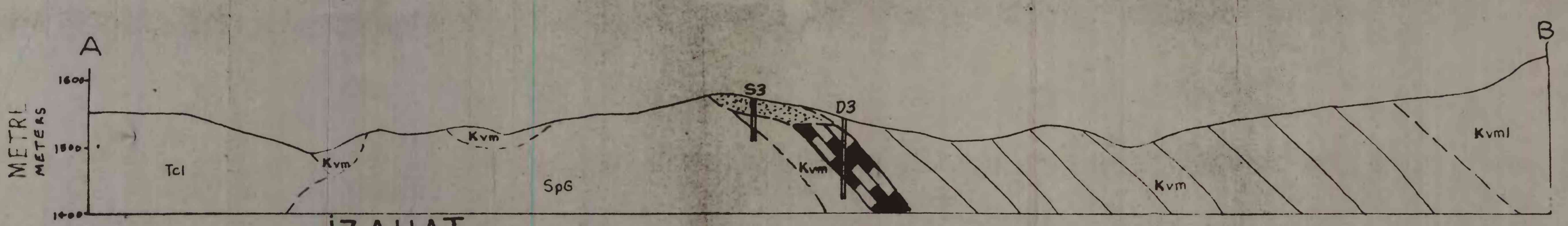
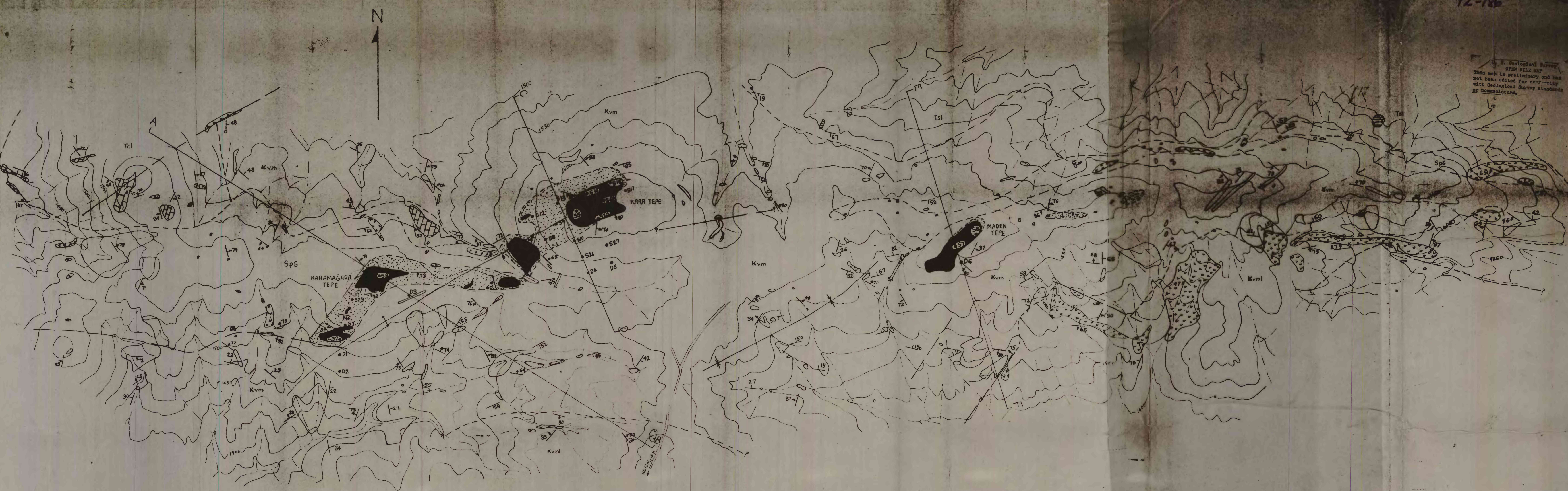


U.S. Geological Survey
OPEN FILE MAP
This map is preliminary and has
not been edited for conformity
with Geological Survey standards
or nomenclature.



**IZAHAT
EXPLANATION**

- | | | | |
|--|--|---|---|
| SEDİMANTER VE VOLKANİK KAYAÇLAR
Sedimentary and volcanic rocks | | ○ | MOSTRA
Outcrop |
| | KIRMIZI TABAKALAR (KONGLOMERA KUMTAŞI, ŞEYL)
Red beds (Conglomerate, sandstone, shale) | ↗ | TABAKA DOĞRULTU VE EĞİMİ
Strike and dip of beds |
| | FRAKTİT
Trachyte | ↘ | YARIK DOĞRULTU VE EĞİMİ
Strike and dip of fractures |
| METASE
Metasedimentary | | — | KONTAKT
Contact |
| | MASIF KALKER (KİŞMEN METAMORFİK)
Massive limestone (partly metamorphosed) | — | FAY
Fault |
| | Kvml KONGLOMERA, KUMTAŞI, ŞEYL, TÜF, KALKER
Conglomerate, sandstone, shale, tuff, limestone | — | TOPOĞRAFİK KONTUR (YÜKSEKLİKLER METRE OLARAK)
Topographic contour (meters elevation) |
| INTRUSİF KAYAÇLAR
Intrusive rocks | | + | SENKİNAL EKSENİ
Synclinal axis |
| | SpG SERPANTİNİT, PERİDOTİT, GABRO
Serpentinite, pectolite, gabbro | + | ANTİKİNAL EKSENİ
Anticlinal axis |
| DEMİR MINERALLERİ
Iron minerals | | + | ELMAS SONDAJ
Diamond drill hole |
| | GÖRÜNÜR MASİF DEMİR OKSİT
Visible massive iron oxides | | |
| | MUHTEMEL MASİF DEMİR OKSİT
Inferred massive iron oxides | | |
| | SİDERİT
Siderite | | |

ÖLÇEK : 1/5000
Scale :
0 100 200 300 400 500
METRE - Meters

KONTURLAR ARASI : 25 m.
Contour interval 25 meters

Not: MTA 4039 NOLU TOPOĞRAFİK HARİTASINDAN
Topography from MTA Map No: 4039

ÇİZENLER (Mapped by): Herbert S. Jochims (USGS) and
Osman Önder (MTA)

DEVECİ MADENİ SAHASI JEOLJİK HARİTA VE KESİTLERİ
GEOLOGIC MAP AND SECTIONS OF THE DEVECİ MINE AREA

U.S. GEOLOGICAL SURVEY
LIBRARY
JUN 23 1972