

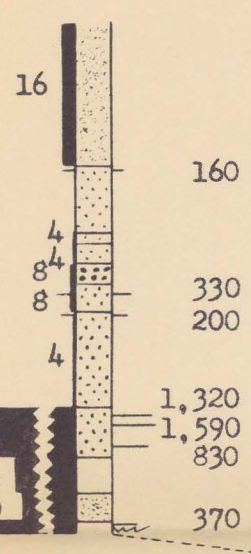
Elevation above mean sea level (feet)

4,040 —
4,020 —
4,000 —
3,980 —
3,960 —
3,940 —
3,920 —
3,900 —

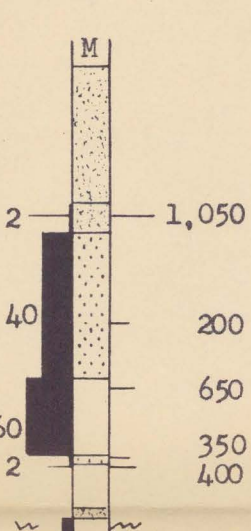
Elevation above mean sea level (feet)

4,040 —
4,020 —
4,000 —
3,980 —
3,960 —
3,940 —
3,920 —
3,900 —

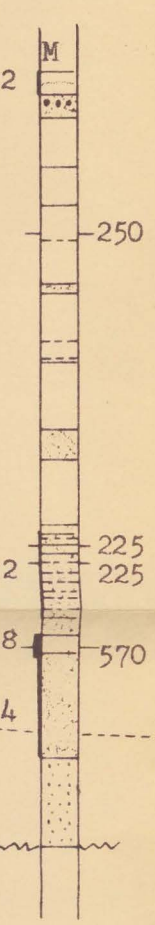
FR 41



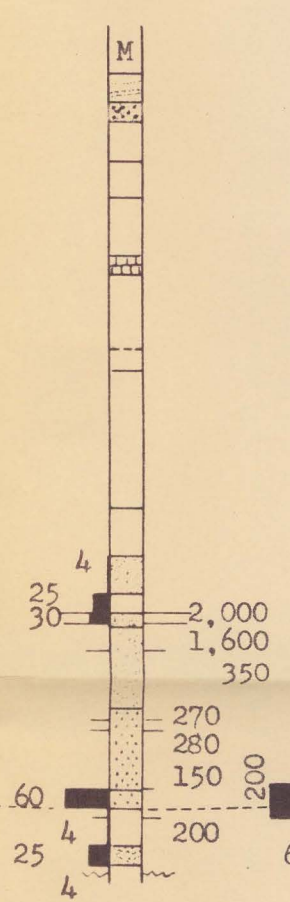
FR 40



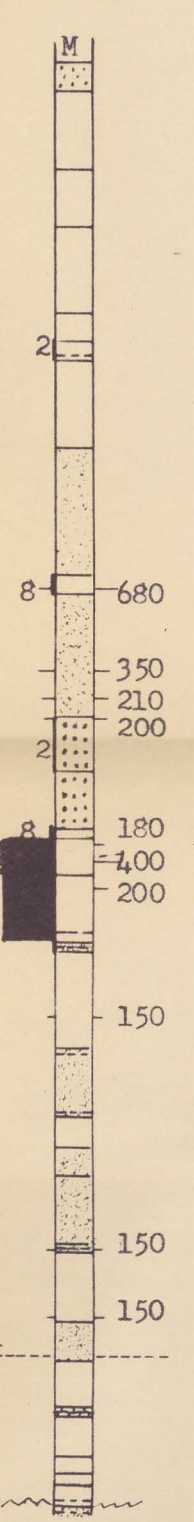
FR 77



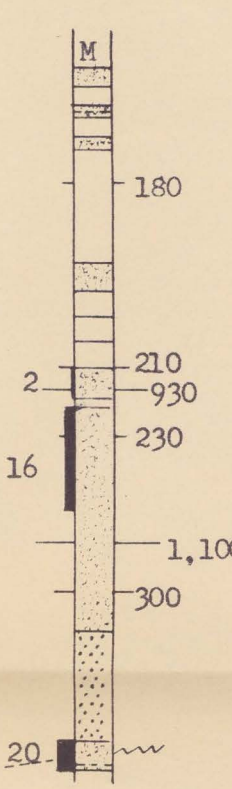
FR 76



FR 54



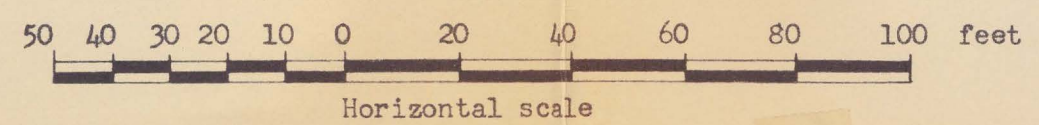
FR 157



Approximate uppermost water level, known and inferred, (August 7, 1954)

Lower water level, August 7, 1954.

- M Missing core
- Mudstone
- Very fine-grained sandstone
- Fine-grained sandstone
- Medium-grained sandstone
- Limestone
- Abundant calcite
- Lower limit of gamma ray log
- Uranium content in ppm. (less than 2 ppm. for values not given)
- Gamma ray radioactivity in c.p.s. (values usually less than 150 c.p.s. not given)



This map is preliminary and has not been edited for conformity with Geological Survey format

PLATE 6. CROSS SECTION SHOWING THE LITHOLOGY, GAMMA RAY RADIOACTIVITIES, URANIUM ANALYSES, AND WATER LEVEL BETWEEN A. E. C. DRILL HOLES FR 41 AND FR 157 IN THE CLARABELLE AREA, FALL RIVER COUNTY, SOUTH DAKOTA