

LOW FLOW OF STREAMS BY DONALD A. OLIN

UNITED STATES
DEPARTMENT OF THE INTERIOR
GEOLOGICAL SURVEY

72-276
OPEN-FILE MAP
ELLINGTON QUADRANGLE
CONNECTICUT

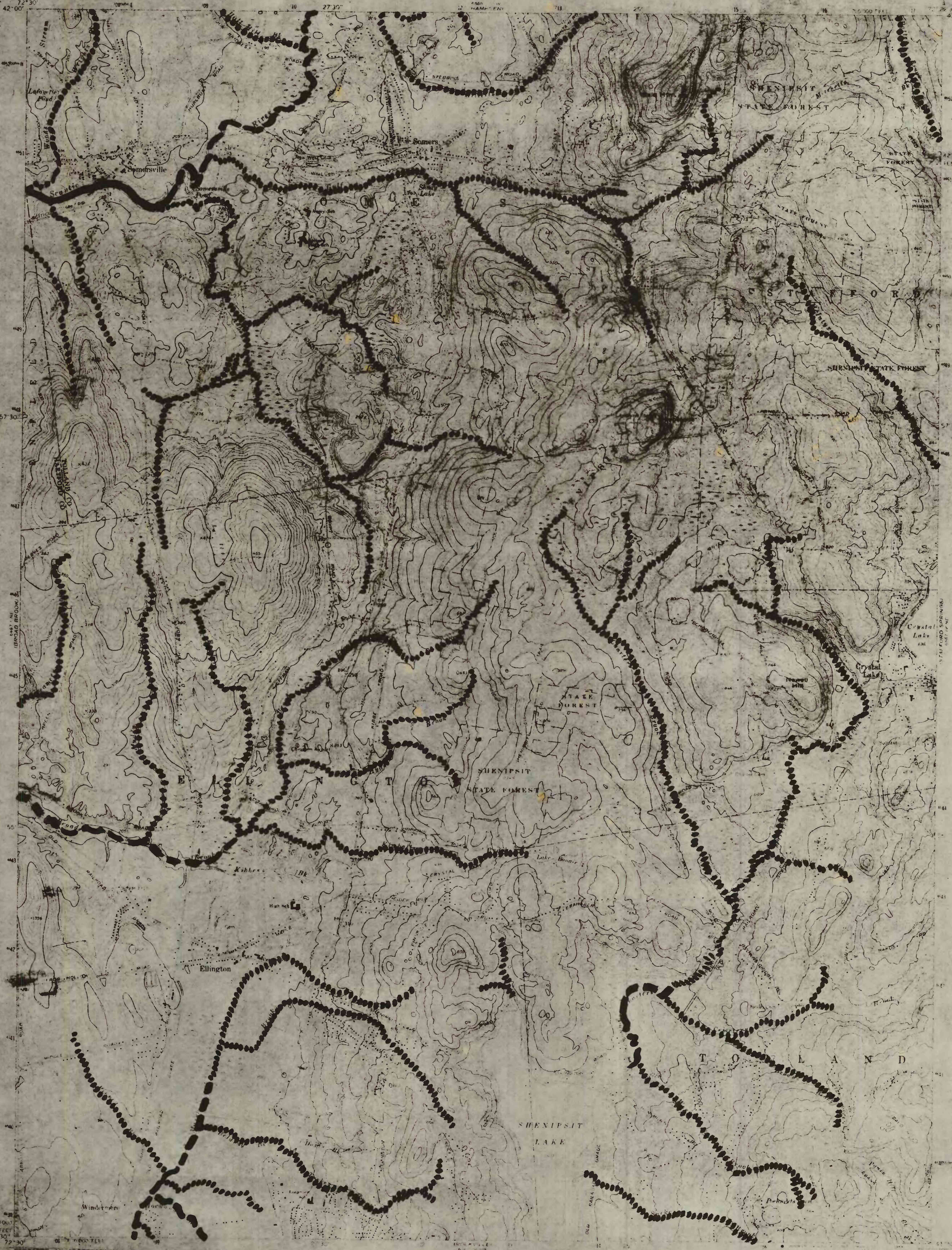
EXPLANATION
Low flow of streams shown on this map is equivalent to the lowest average daily streamflow that can be expected for 30 consecutive days on average of once in 2 years. This low-flow parameter is one measure of the minimum quantity of surface water available from run-of-the-river development.
The distribution of streamflow as mapped was determined by correlating long-term and miscellaneous streamflow records obtained within the map area and adjoining areas. The standard error of estimate for any mapped unit is about ± 35 percent.

Low-flow in million gallons per day

.....
Less than 1

— — — — —
1 to 10

—————
10 to 100



PREPARED IN COOPERATION WITH
CONNECTICUT DEPARTMENT OF
ENVIRONMENTAL PROTECTION
Base is USGS Ellington Quadrangle

ROAD CLASSIFICATION
Primary - gravel or asphalt
Secondary - gravel or asphalt
Tertiary - gravel or dirt
Unimproved road - fair or dry weather
State Route

ELLINGTON, CONN.
1967