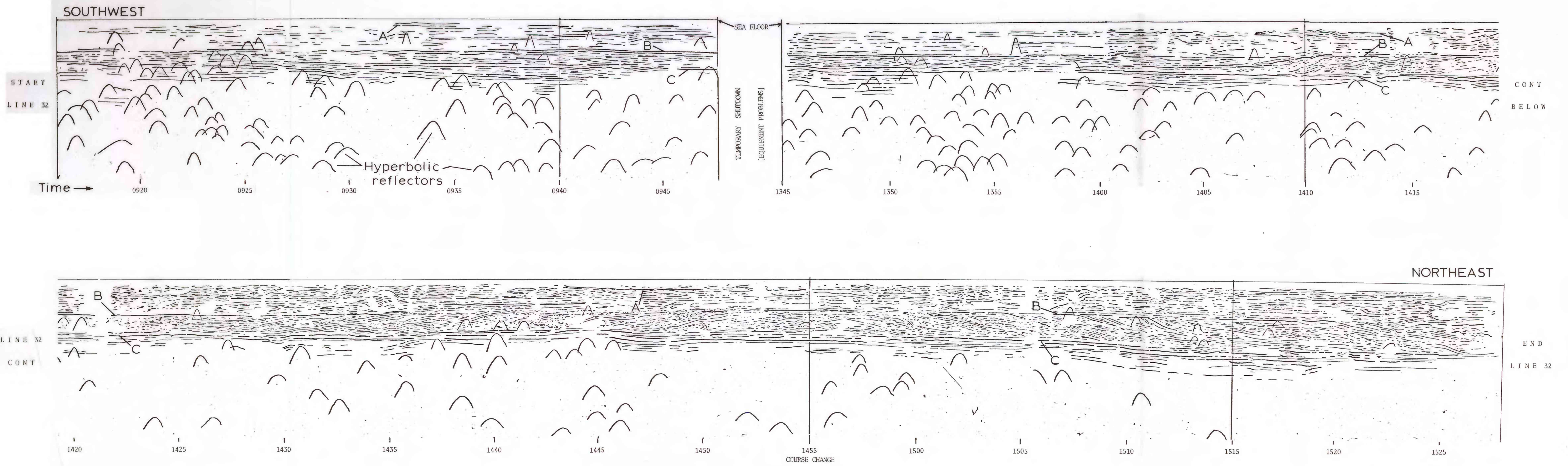
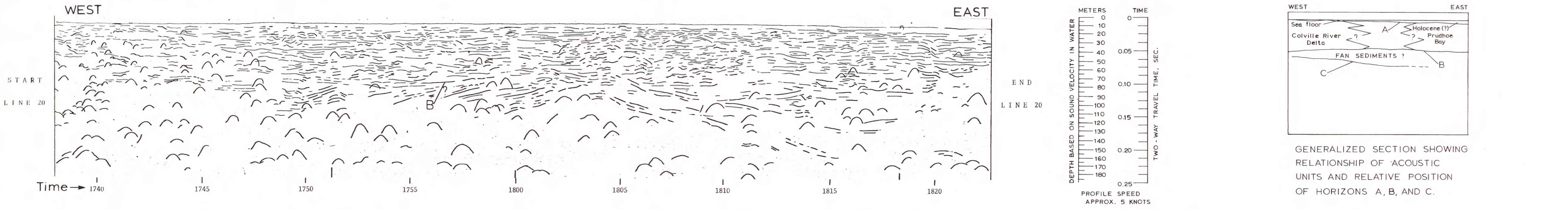


32 - SIMPSON LAGOON (V.E. = 4X)



20 - PRUDHOE BAY (V.E. = 4X)



LINE DRAWINGS OF TWO REPRESENTATIVE PROFILES AND GENERALIZED SECTION OF STUDY AREA

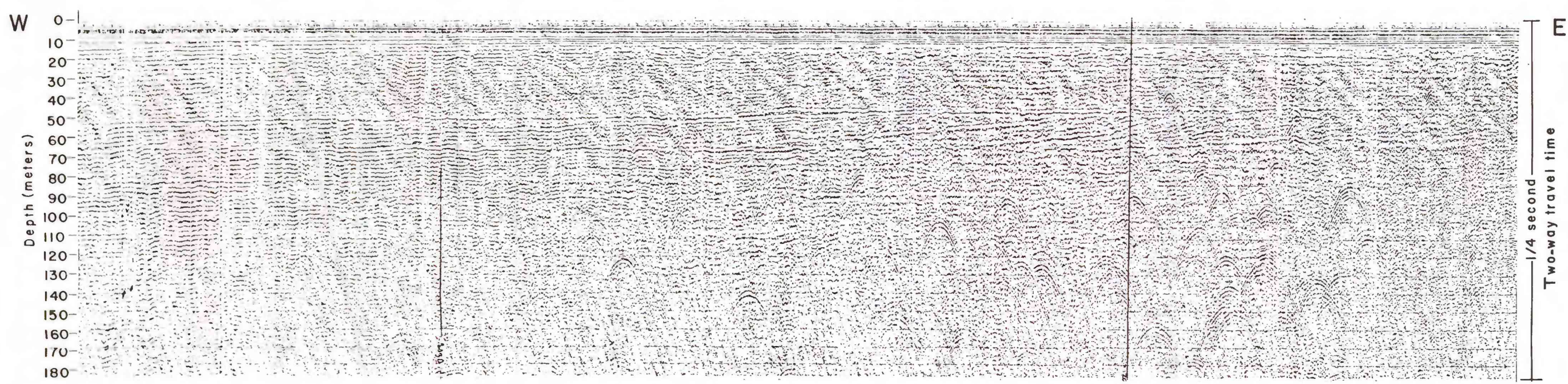


Figure 5. Example of unedited sparker record.

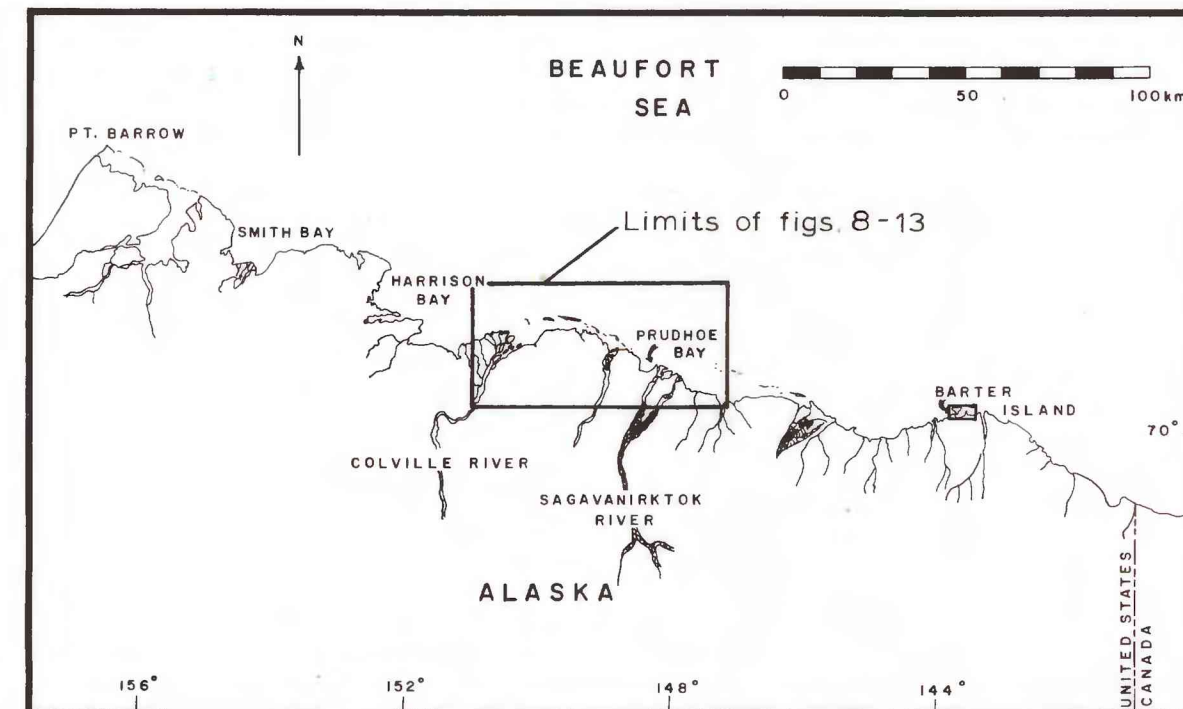


Figure 6. Location map showing Alaskan part of Beaufort Sea coast.

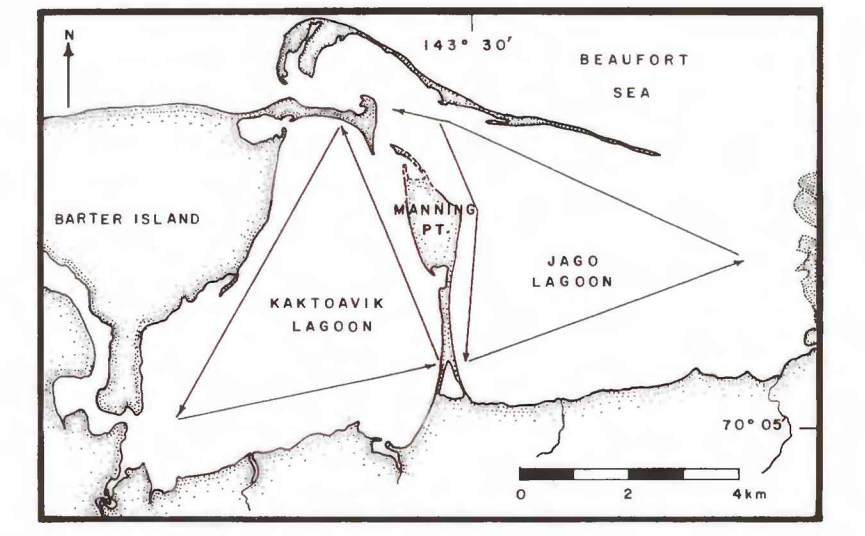


Figure 7. Seismic track lines in the Barter Island area.

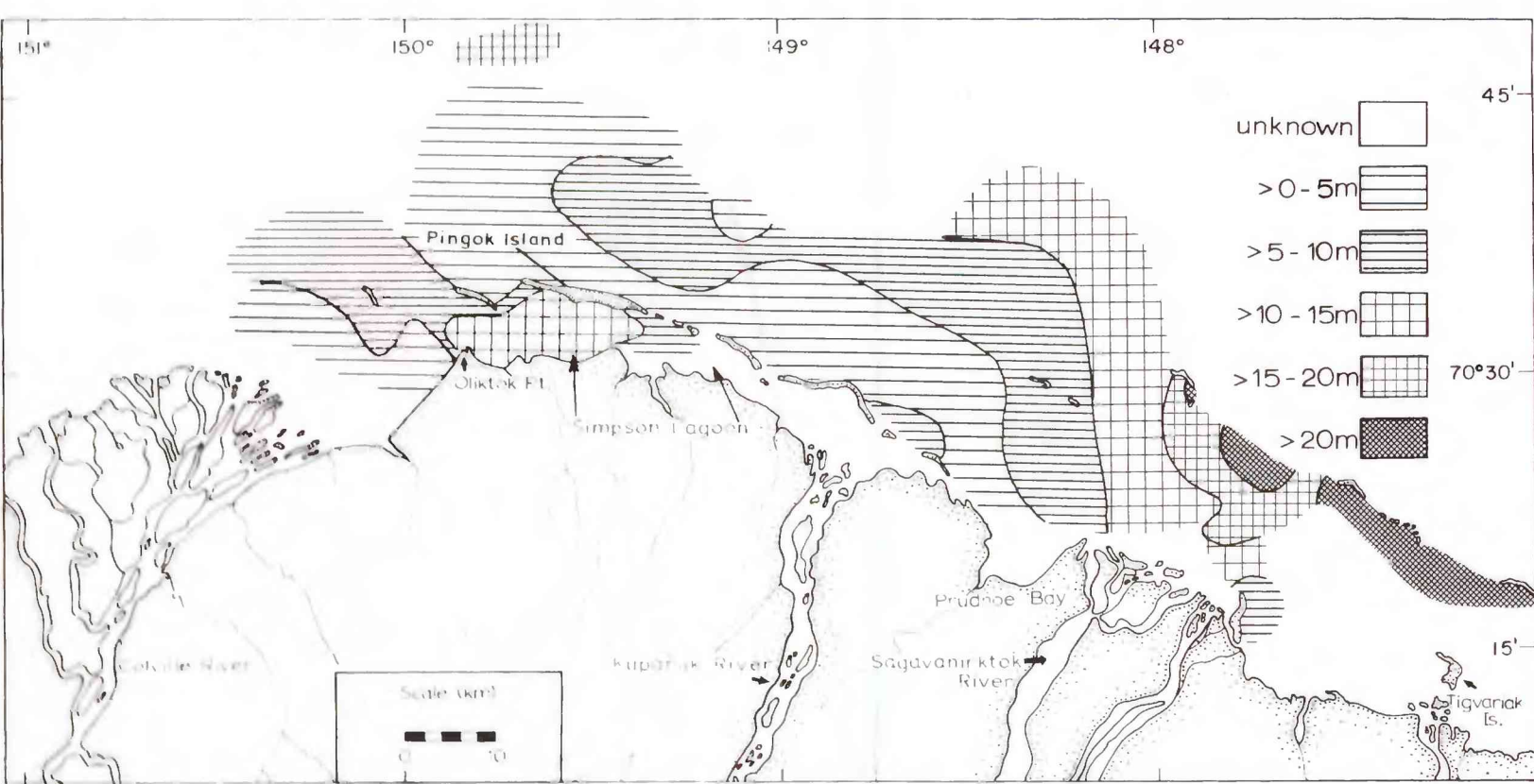


Figure 8. Thickness of probable Holocene marine sediments (above horizon A) based on sound velocity in water.

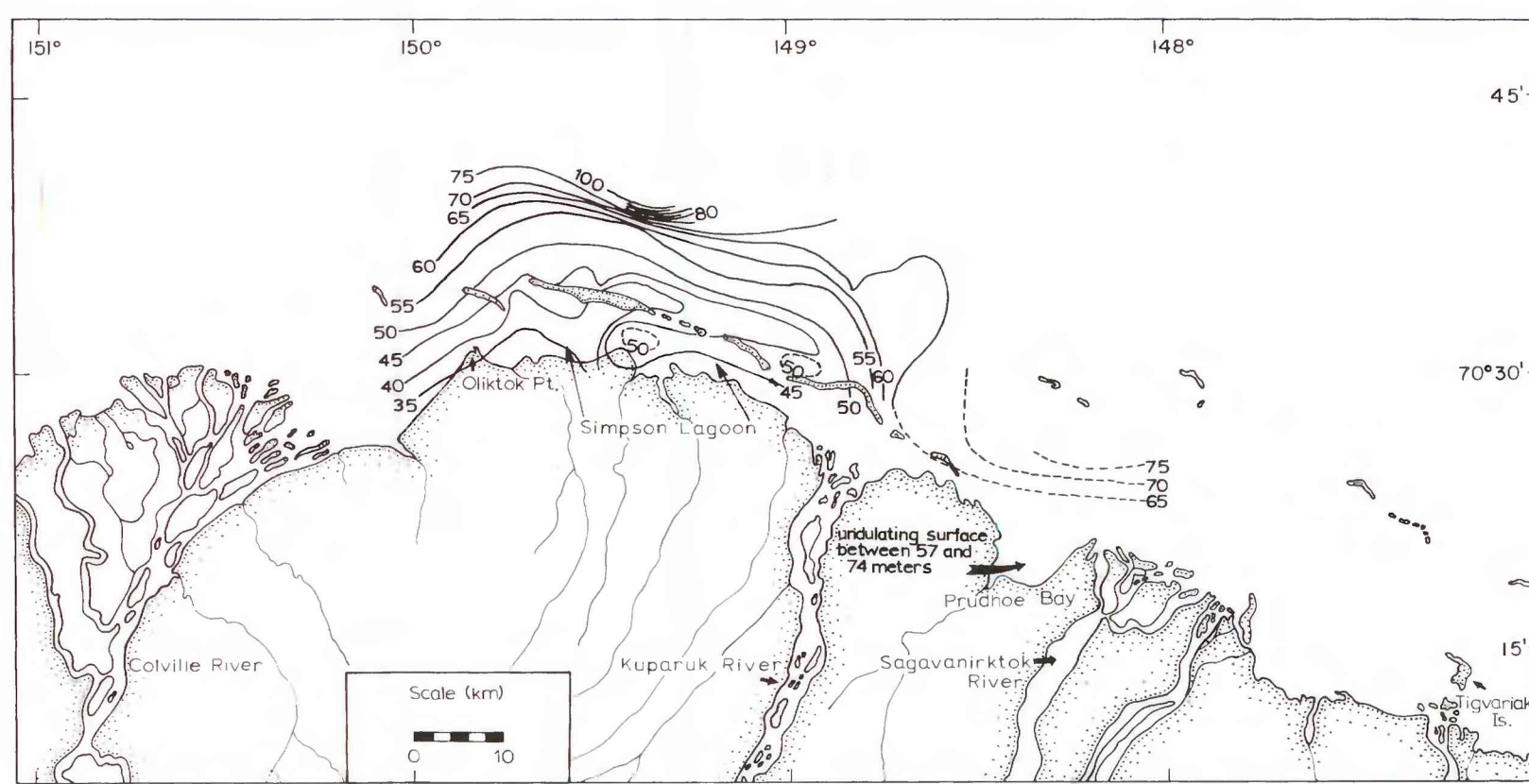


Figure 9. Thickness of sediments above horizon B based on sound velocity in water.

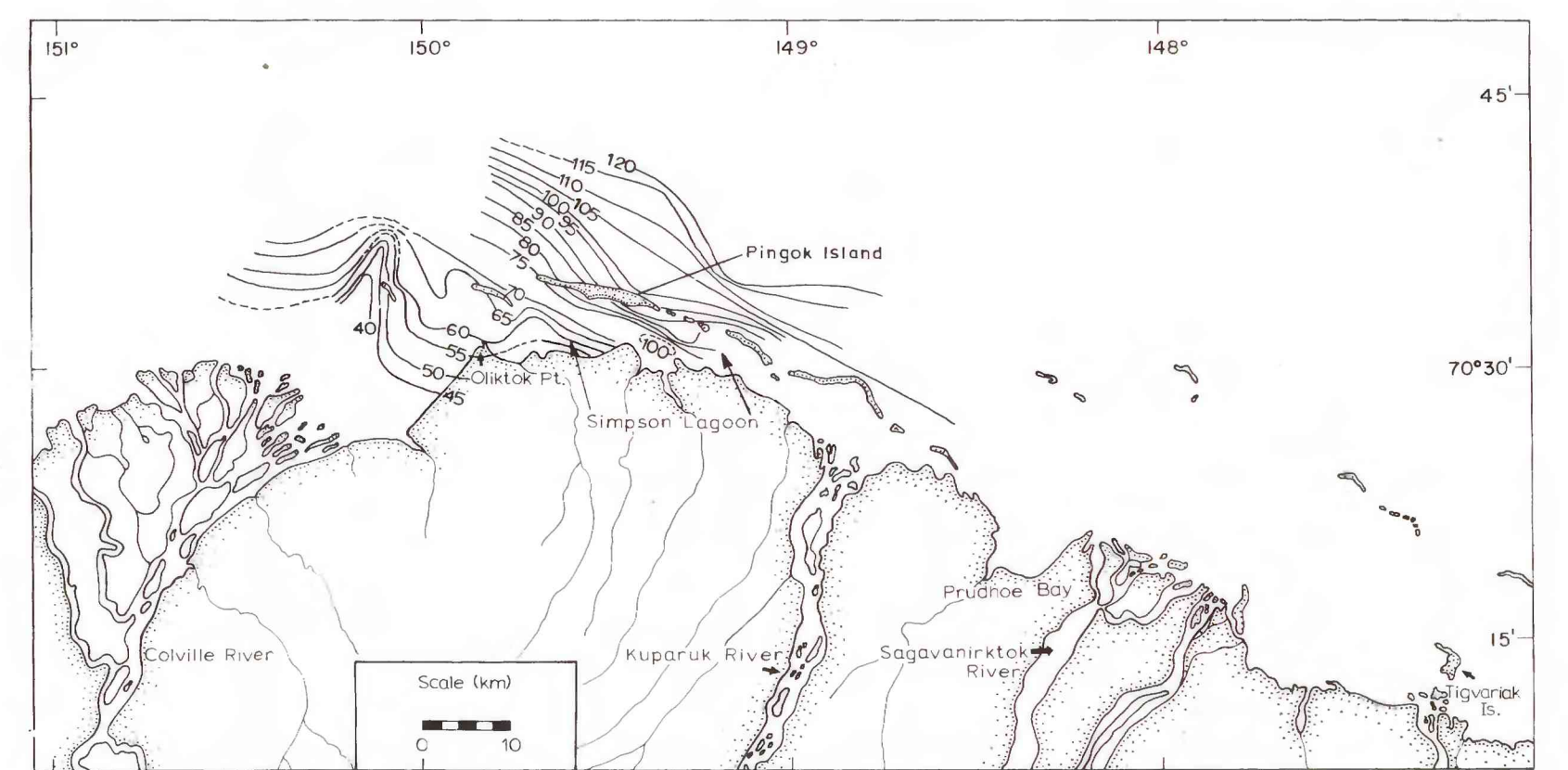


Figure 10. Thickness of sediments above horizon C based on sound velocity in water.

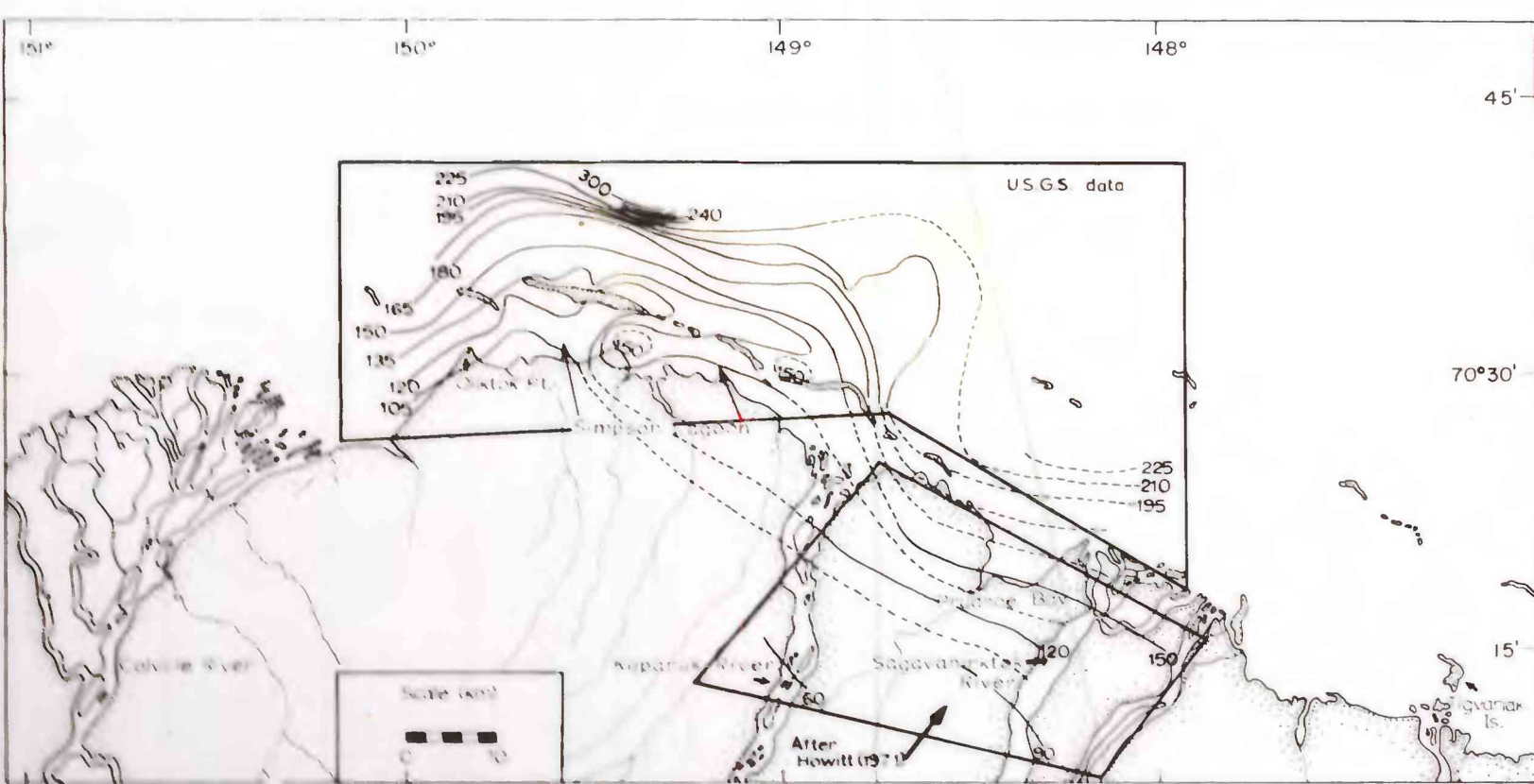


Figure 11. Tentative correlation of horizon B (based on sound velocity in water) with onshore marker horizon 8 (after Howitt, 1971).

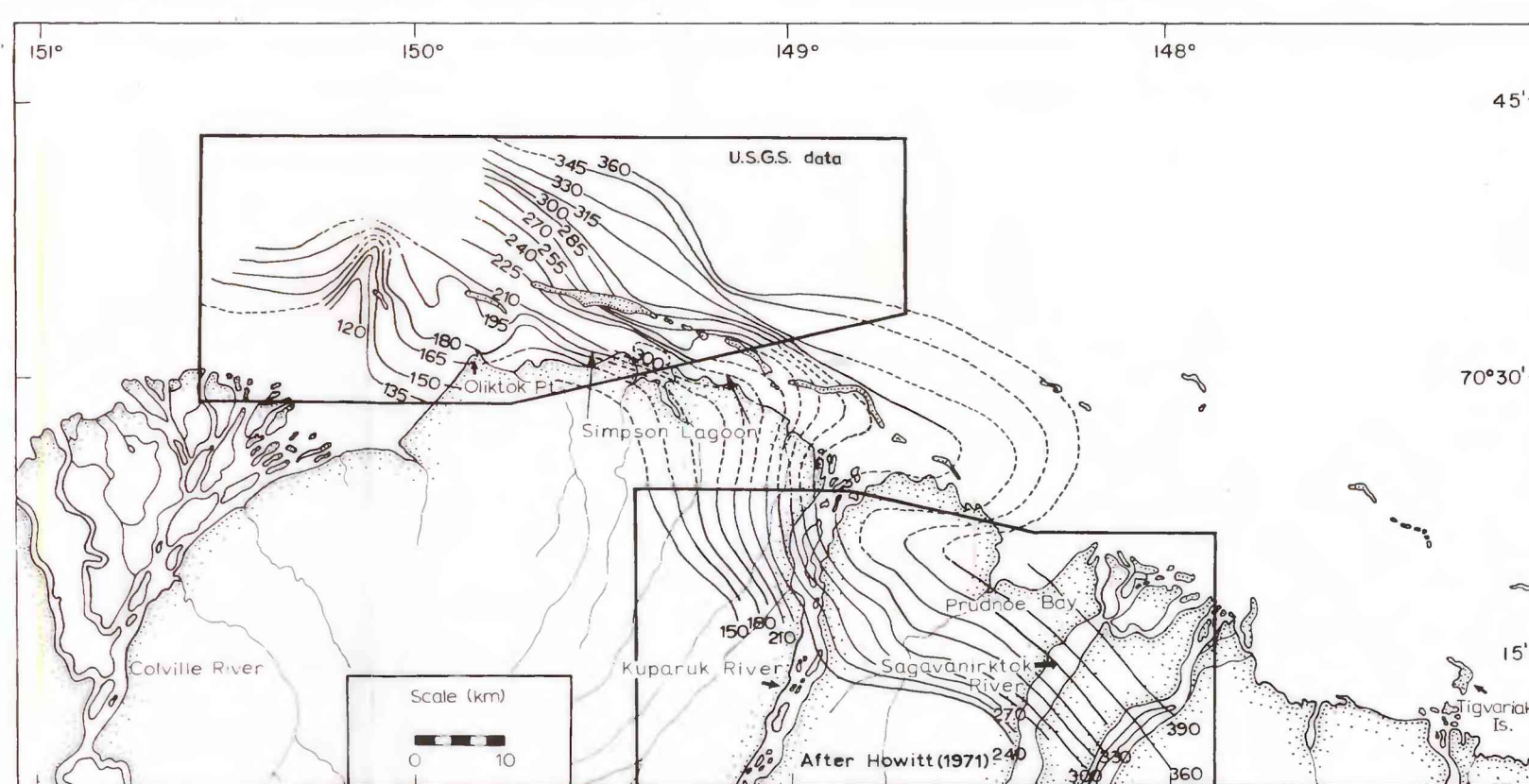


Figure 12. Tentative correlation of horizon C (based on sound velocity in water) with onshore marker horizon 10 (after Howitt, 1971).

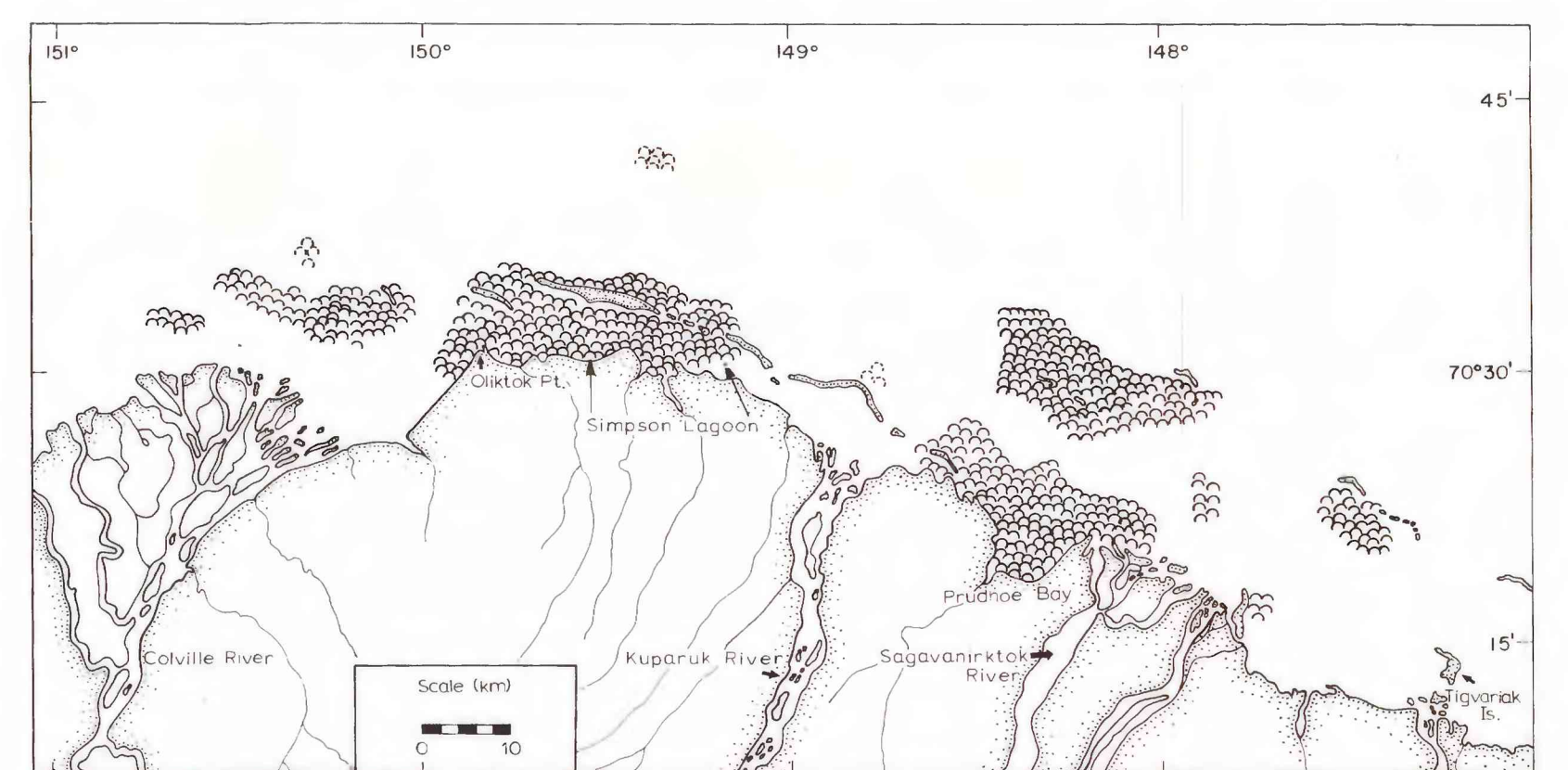


Figure 13. Areal distribution of point-source reflectors (hyperbolas) seen in seismic records.

PRELIMINARY INTERPRETATION OF SEISMIC PROFILES IN THE PRUDHOE BAY AREA, BEAUFORT SEA, ALASKA

By
Erk Reimnitz, Stephen C. Wolf, and Craig A. Rodeick
1972

THIS MAP IS PRELIMINARY AND HAS NOT BEEN EDITED OR REVIEWED FOR CONFORMITY WITH U.S. GEOLOGICAL SURVEY STANDARDS AND NOMENCLATURE.