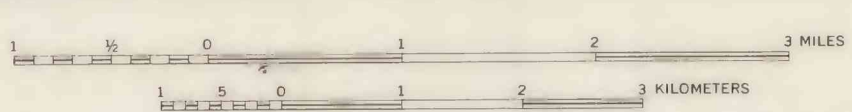


Base from U.S. Geological Survey
1:24,000 Cowarda 1949, Plattville 1949,
Frederick 1950, Fort Lupton 1949,
Eastlake 1957, Brighton 1957



MAP SHOWING TRANSMISSIVITY OF THE VALLEY-FILL AQUIFER IN THE BRIGHTON REACH OF THE SOUTH PLATTE RIVER VALLEY, COLORADO

By
Donald R. Albin and R. Theodore Hurr
1972