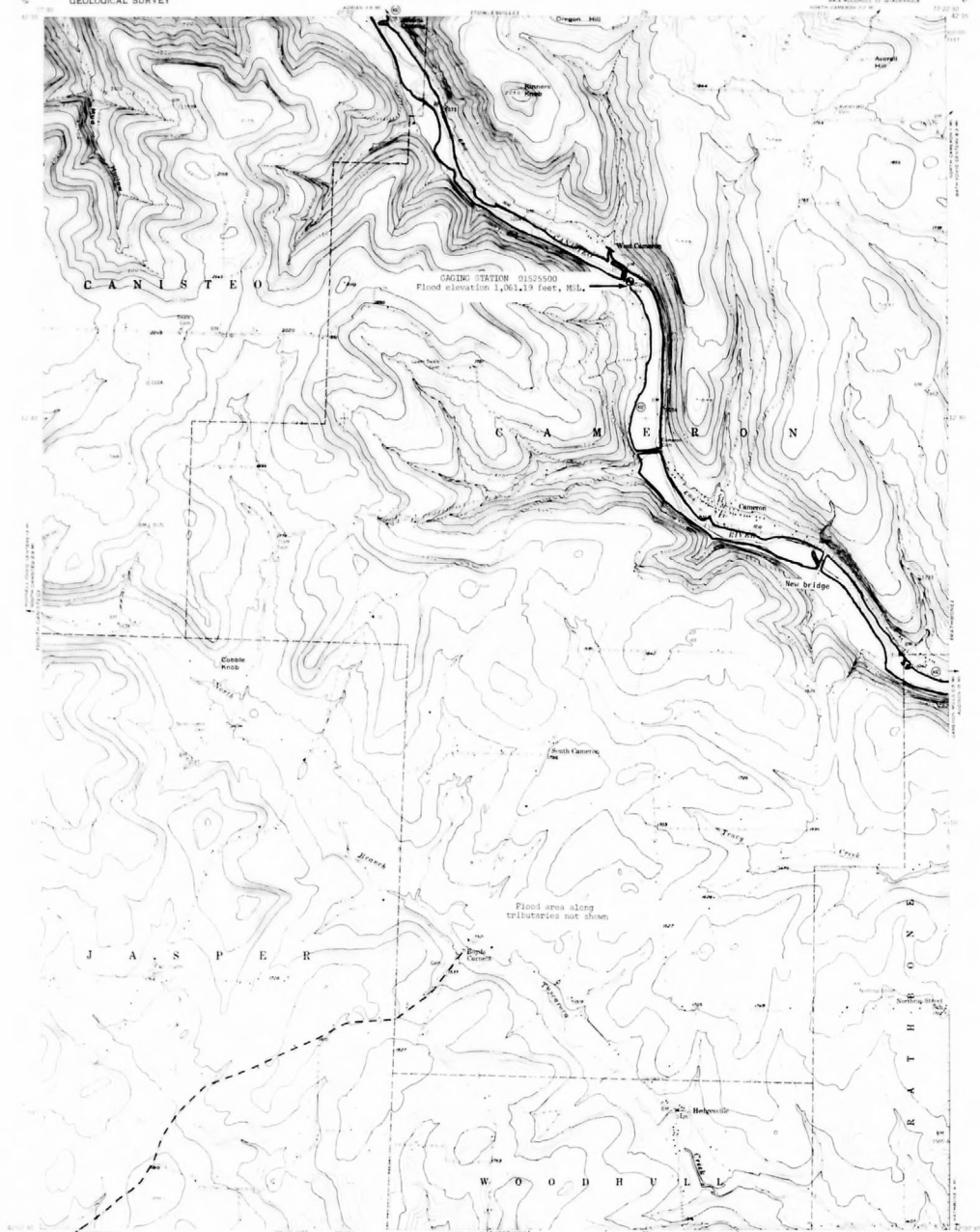


UNITED STATES
DEPARTMENT OF THE INTERIOR
GEOLOGICAL SURVEY

FLOOD OF JUNE 1972
CANISTEO RIVER AT CAMERON, NEW YORK
By L.A. Swallow and W.N. Embree

CAMERON QUADRANGLE
NEW YORK STATEWORKS CO.
7.5-MINUTE SERIES TOPOGRAPHIC
MAPS AND MAPS OF THE ADJACENT



In June 1972, tropical storm Agnes caused severe flooding in Pennsylvania and southern New York. The floods on many major streams were the highest known since the river valleys were settled. Maximum discharges were as much as twice the discharge of a 50-year flood. In southern New York, large areas in Corning, Elmira, Wellsville, Salamanca, and in many smaller communities were inundated to depths of several feet. Levels of all of the Finger lakes were higher than any previously recorded, and extensive flooding of lakeside properties resulted.

The extent of flooding shown on the map was delineated by the U.S. Geological Survey from aerial photography and United Field surveys. The investigation was conducted in cooperation with the State of New York and the U.S. Army Corps of Engineers.



EXPLANATION

— Boundary of June 1972 flood
Flood boundaries delineated from
aerial photography and field surveys.

CAMERON, N. Y.

Done by U. S. Geological Survey
1951

OPEN-FILE MAP