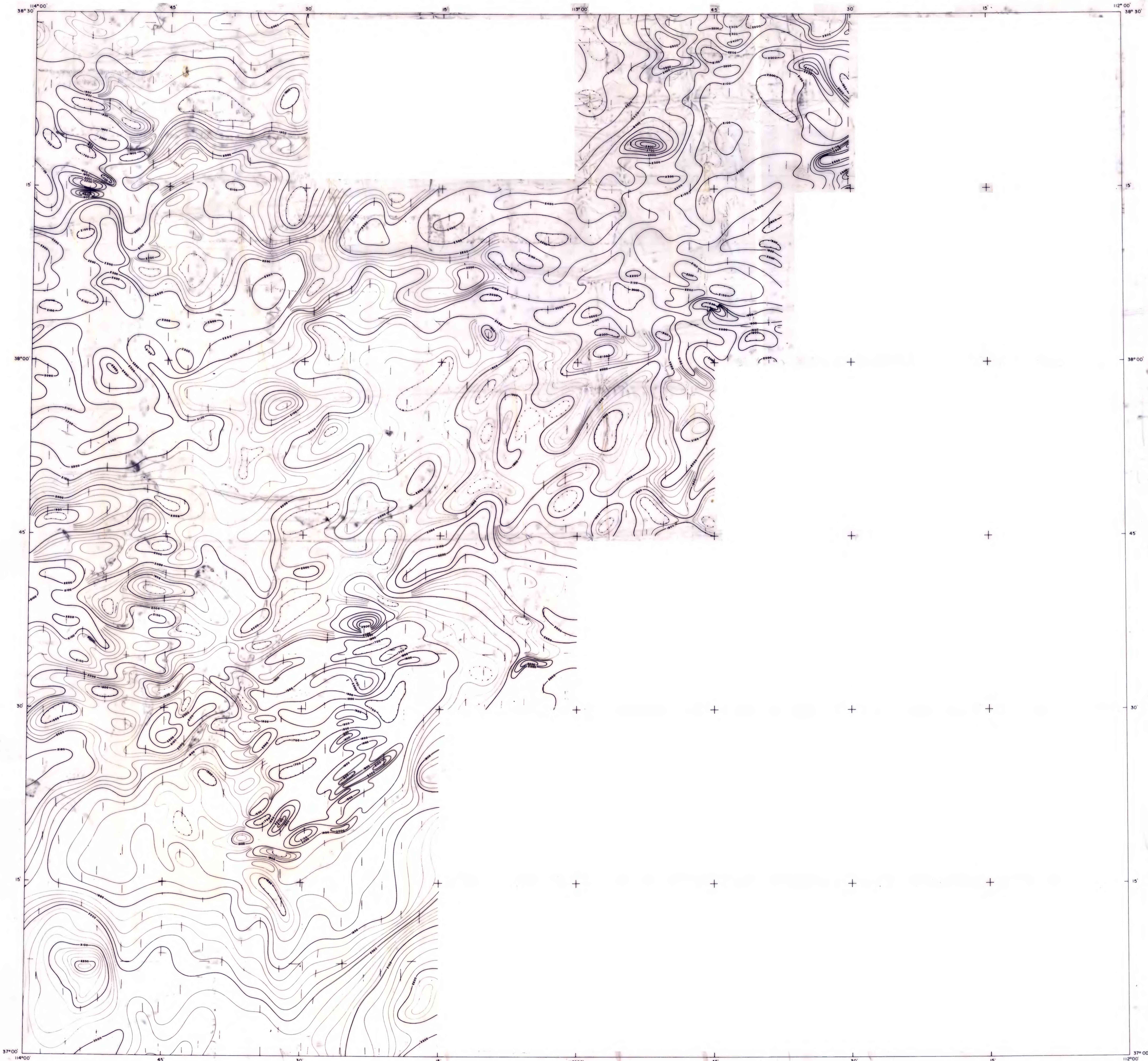


72-387



Grid from US Geological Survey
Richfield, 1962, and Cedar City, 1961

SCALE 1:250 000



Regional Gradient at 9 gammas per mile has been removed

Aeromagnetic survey flown and compiled
by Science Mineral Surveys, Inc.
Flown at 9,000 feet barometric elevation

Contour intervals are 20 and 100 gammas.

EXPLANATION



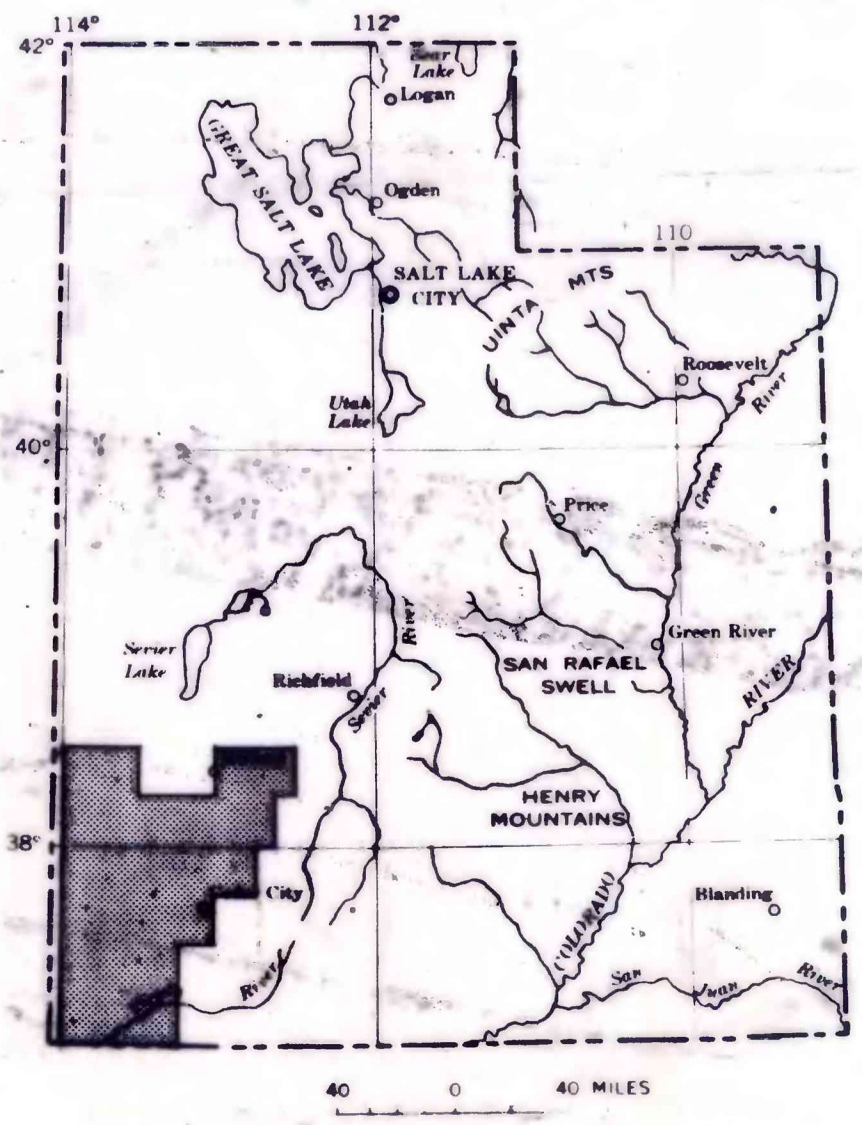
Magnetic contours
Showing total intensity magnetic field
of the earth in gammas relative to
arbitrary datum. Hachured to indicate
areas of lower magnetic inten-
sity. Dashed where data are incom-
plete.

Flight path
Showing location and spacing of data

This map is preliminary
and has not been edited
or reviewed for conformity
to Geological Survey
standards.

AEROMAGNETIC MAP OF PARTS OF THE RICHFIELD AND CEDAR CITY 1" BY 2" QUADRANGLES, UTAH

1972



INDEX OF UTAH SHOWING LOCATION OF THIS MAP.