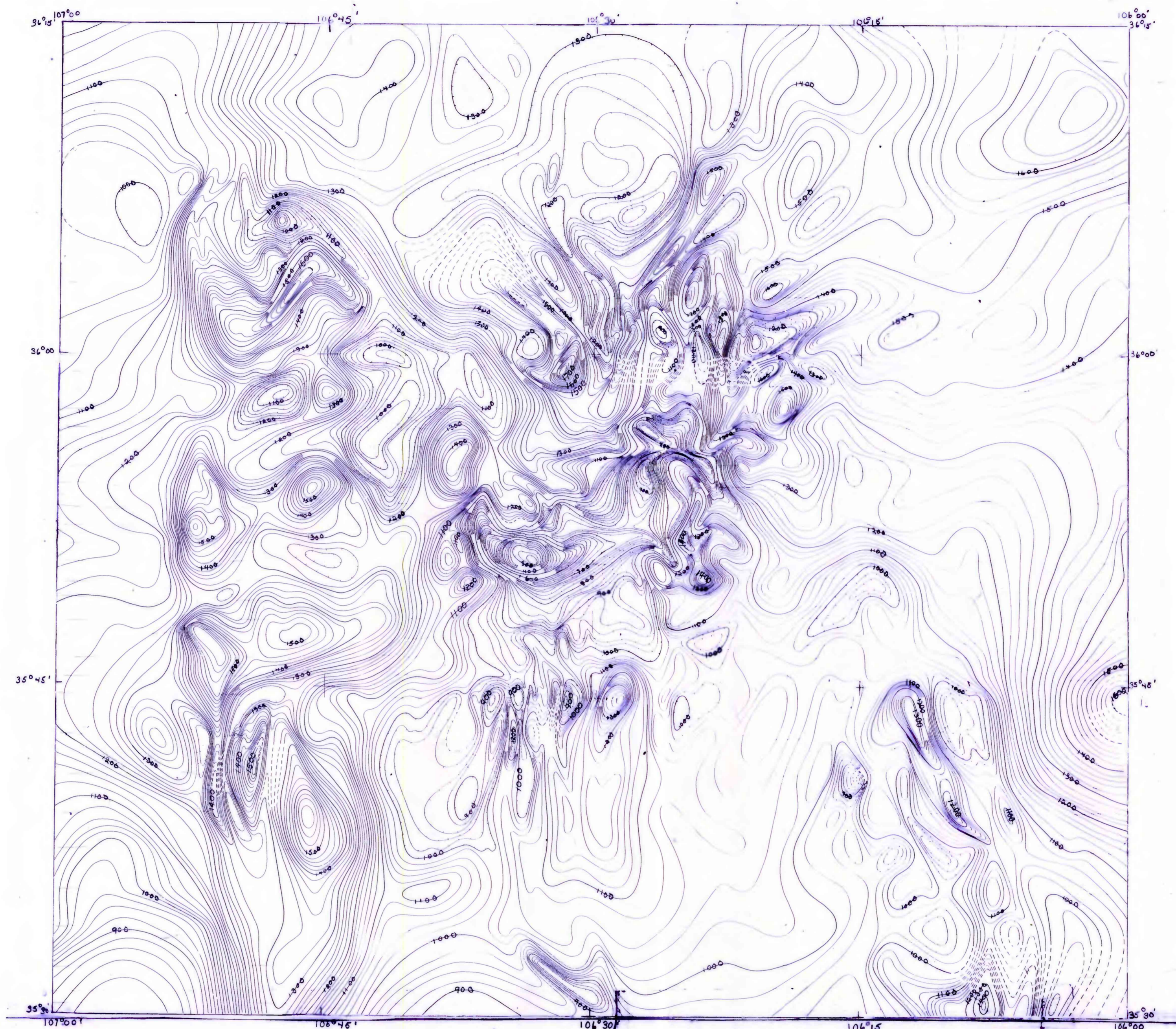
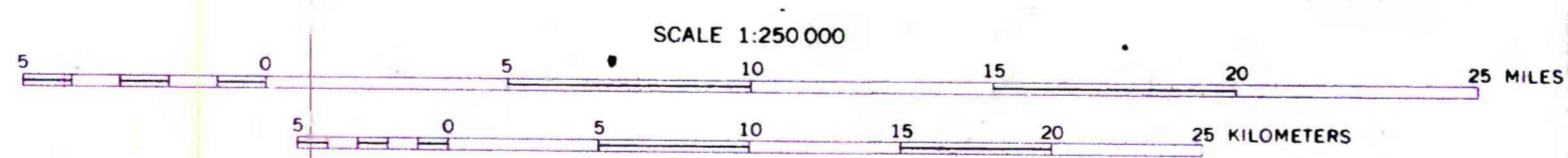


72-391

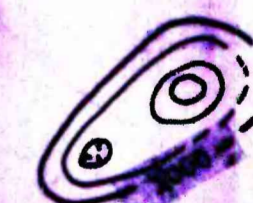


Grid from U.S. Geological Survey

Aeromagnetic survey 1962. Flight elevation is 11,000 feet north of latitude 35° 45' N, and 9,000 feet otherwise.



EXPLANATION



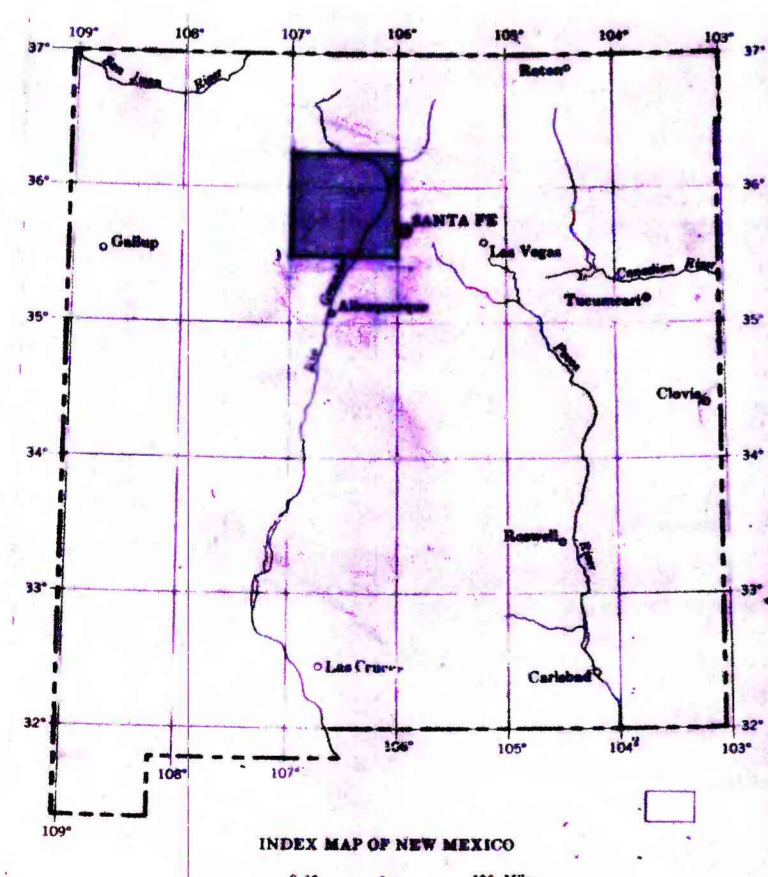
Magnetic contours

Showing total intensity magnetic field of the earth in gammas relative to arbitrary datum. Measured to indicate closed areas of lower magnetic intensity. Dashed where data are incomplete. Contour interval is 25 gammas.

APPROXIMATE MAGNETIC DECLINATION AT CENTER OF MAP AREA IS 13° EAST, 1972.

AEROMAGNETIC MAP OF THE JEMEZ AREA, NEW MEXICO

1972



INDEX MAP OF NEW MEXICO SHOWING LOCATION OF THIS SURVEY. COMPLETE BOUGUER GRAVITY MAP FOR SAME AREA IS ALSO ON OPEN FILE.

This map is preliminary and has not been edited or reviewed for conformity to Geological Survey standards.

Flight path
Showing location and spacing of data