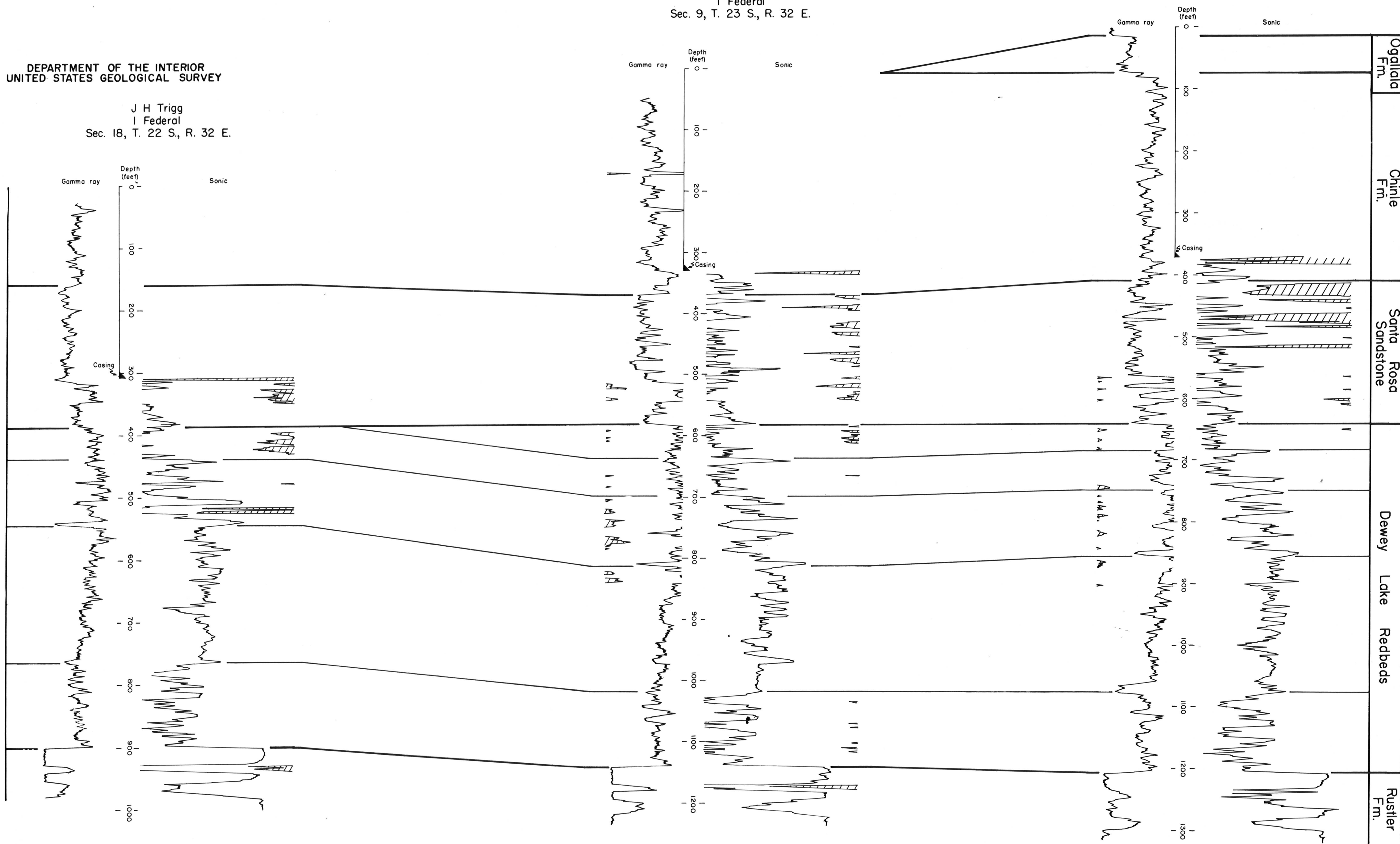


J H Trigg  
I Federal  
Sec. 35, T. 23 S., R. 32 E.

McBee Oil Co.  
I Federal  
Sec. 9, T. 23 S., R. 32 E.

DEPARTMENT OF THE INTERIOR  
UNITED STATES GEOLOGICAL SURVEY

J H Trigg  
I Federal  
Sec. 18, T. 22 S., R. 32 E.



U.S. Geological Survey  
OPEN FILE REPORT  
This map is preliminary and has not  
been edited or reviewed for conformity  
with Geological Survey standards or  
nomenclature.

SUBSURFACE SECTIONS OF POST-RUSTLER ROCKS  
LOS MEDAÑOS AREA, EDDY AND LEA COUNTIES, NEW MEXICO

Geology by C. L. Jones  
November 1972

FIGURE 9