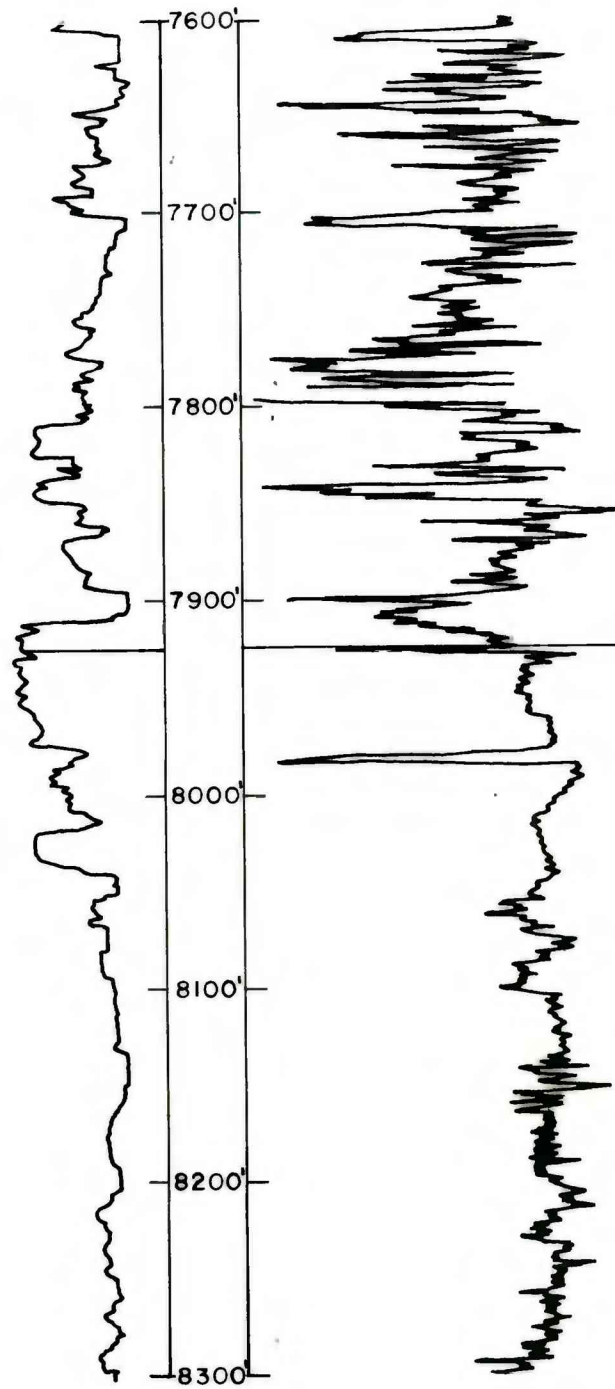
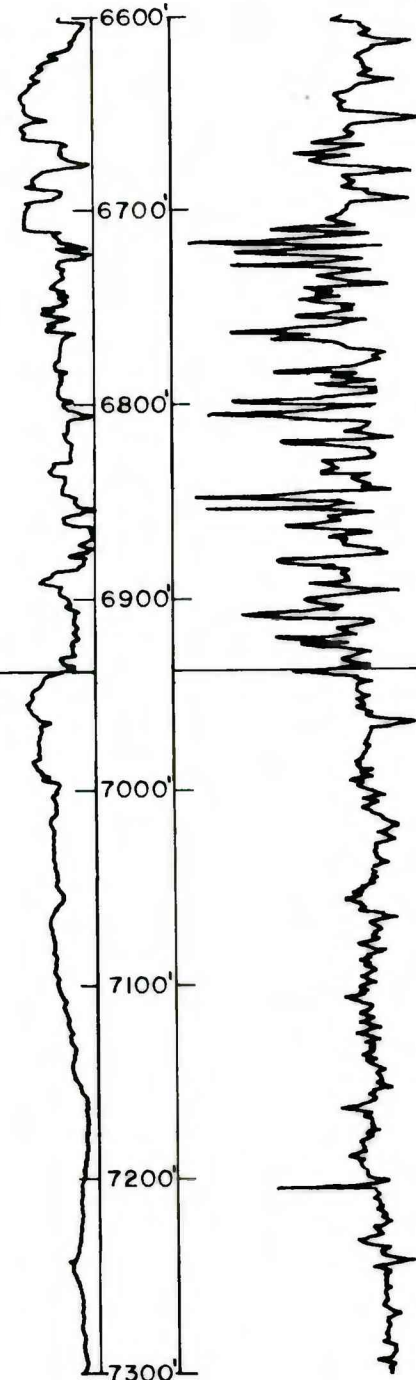


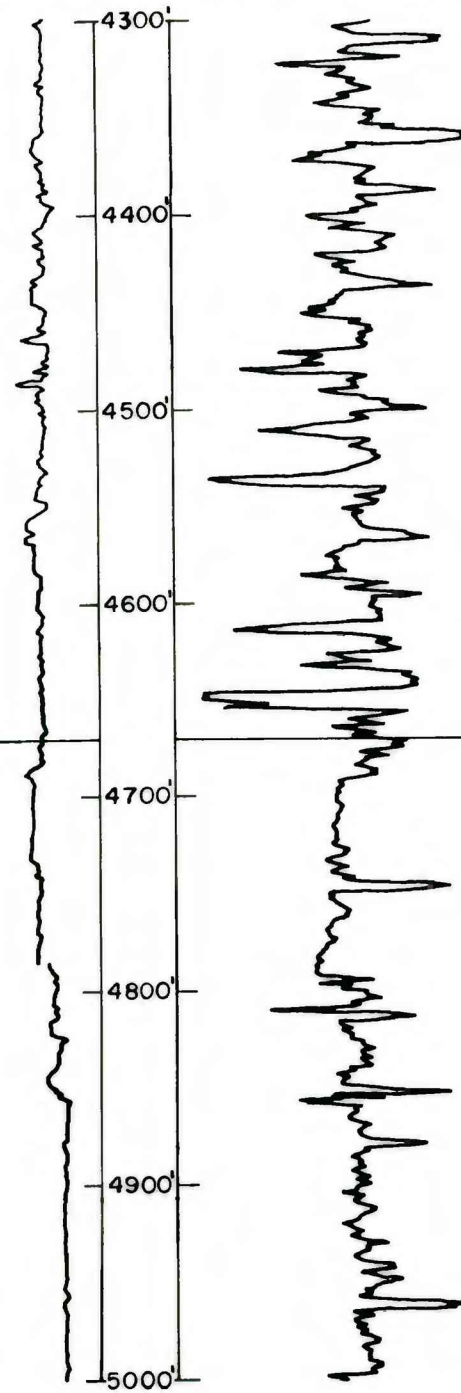
(8A)
Northern Wyoming Land Co. Et Al No. 1
NE 1/4 SW 1/4 Section 24, T. 50N., R. 82W.
Altitude 4871 feet



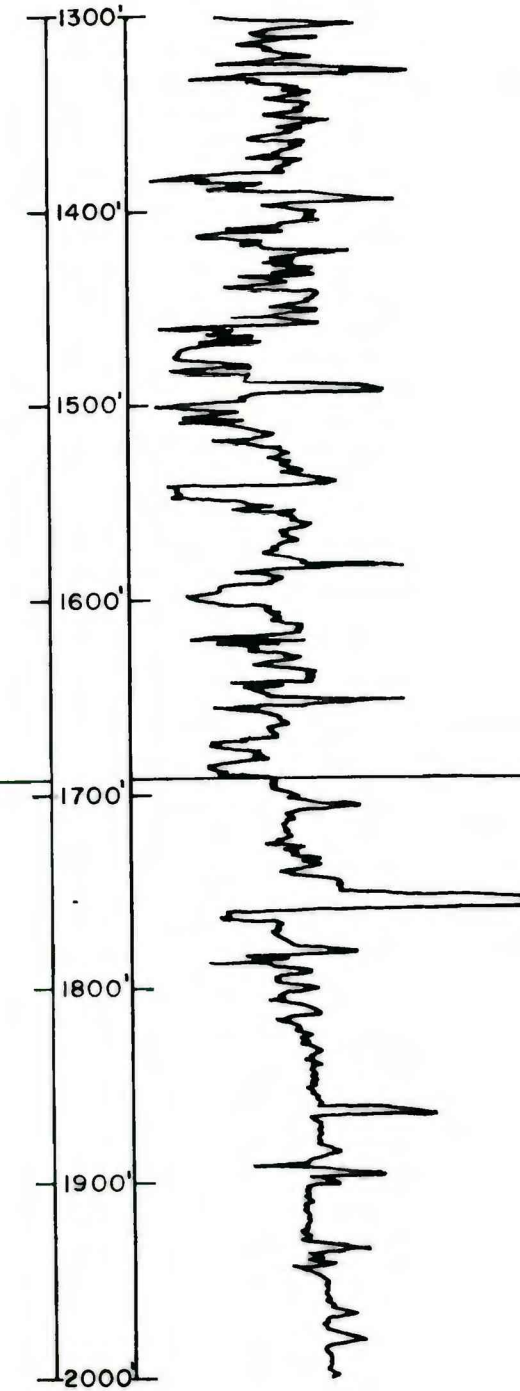
(10)
Federal-Hartley No. 1
SW 1/4 NE 1/4 Section 11, T. 38N., R. 73W.
Altitude 5168 feet



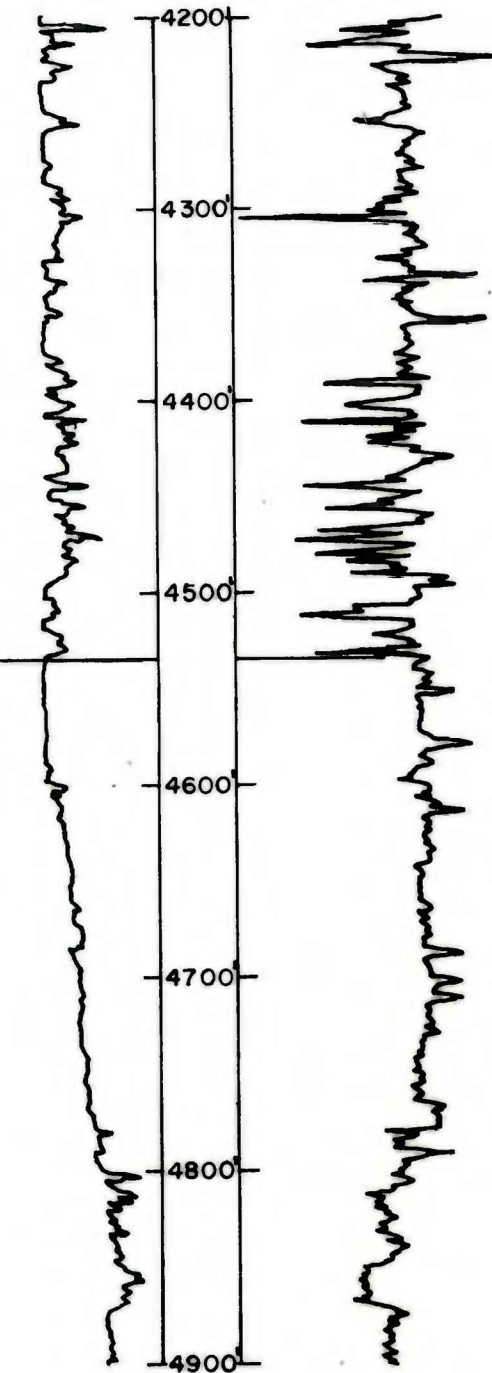
(11)
No. 1 Wyoming State "F"
SW 1/4 SW 1/4 Section 16, T. 32N., R. 70W.
Altitude 5157 feet



(13)
Government No. 1-7
NE 1/4 SW 1/4 Section 7, T. 40N., R. 64W.
Altitude 4187 feet



(17)
Sims No. 33-30
NW 1/4 SE 1/4 Section 30, T. 47N., R. 71W.
Altitude 4684 feet



ACOUSTIC VELOCITY LOGS AT INTERVAL OF FOX HILLS AND LANCE CONTACT. CALIPER LOG ON LEFT SIDE

OPEN-FILE REPORT