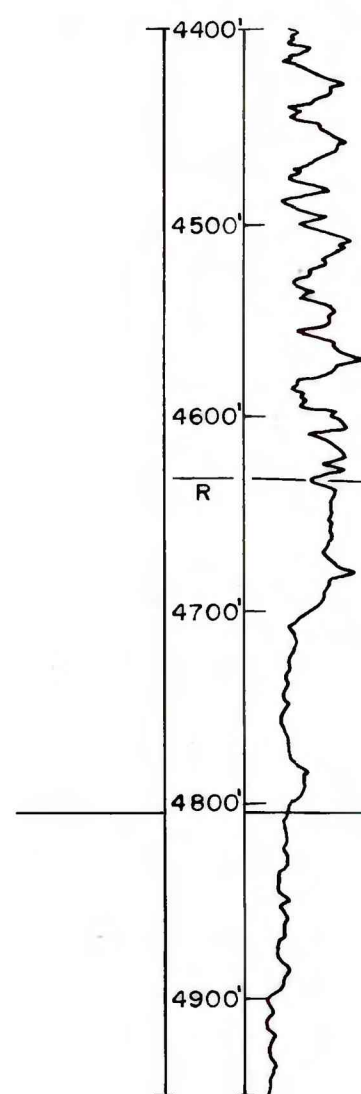
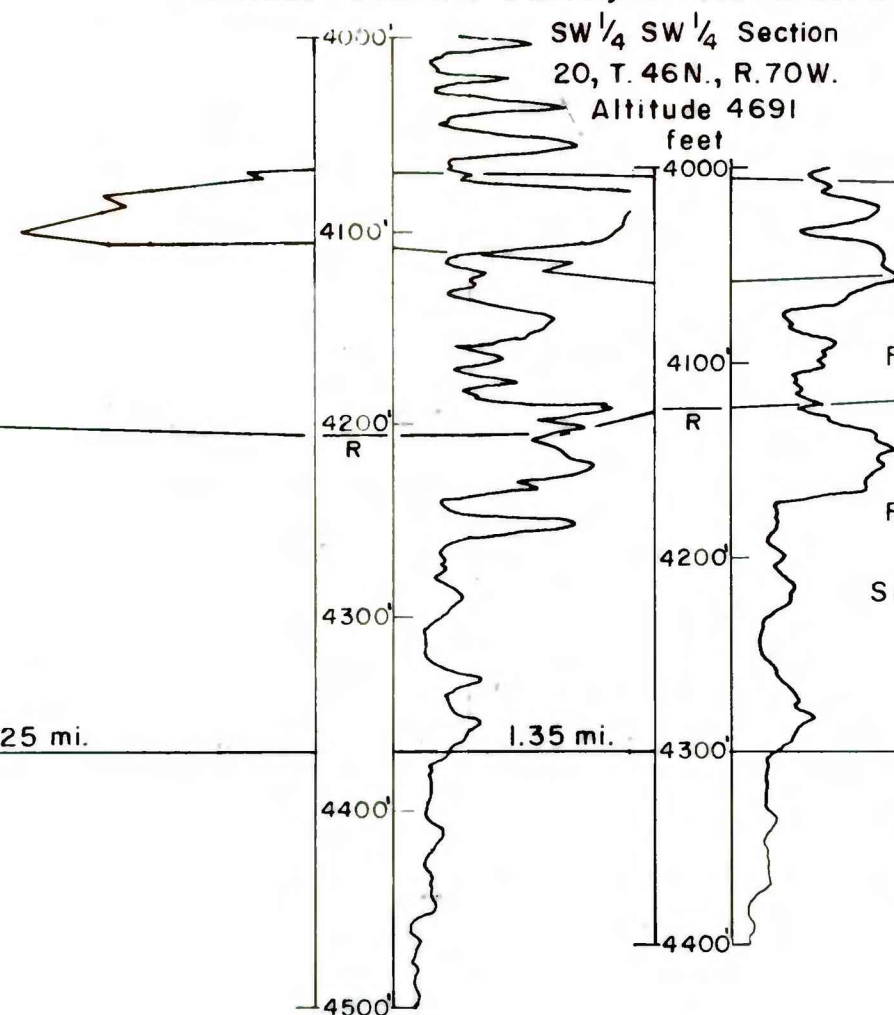


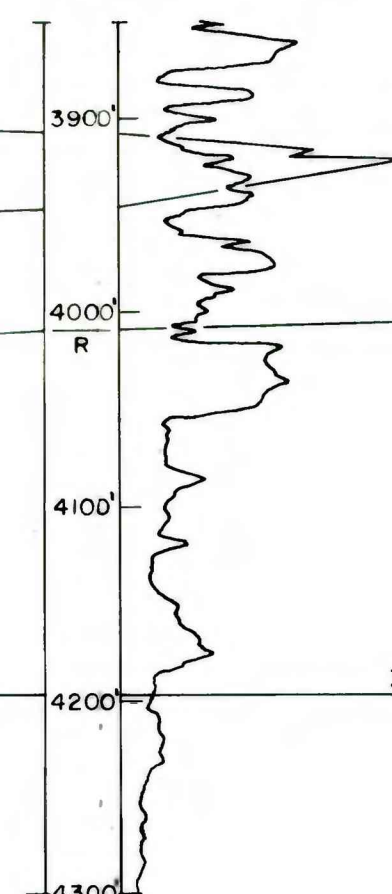
No. 1-Rose-Federal "A"  
SE 1/4 NE 1/4 Section 3, T. 45N., R. 71W.  
Altitude 4790 feet



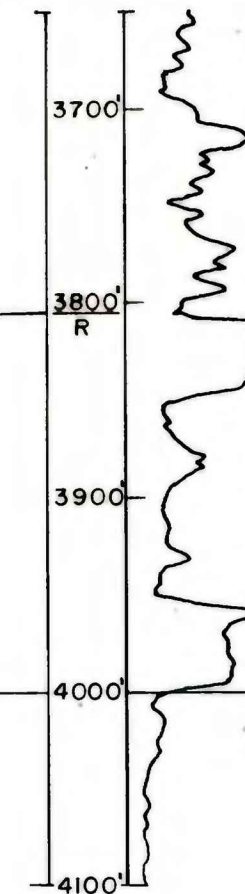
No. 1-φ-30  
SW 1/4 SE 1/4 Section 30, T. 46N., R. 70W.  
Altitude 4646 feet  
Wheatly D Federal No. 3  
SW 1/4 SW 1/4 Section 20, T. 46N., R. 70W.  
Altitude 4691 feet



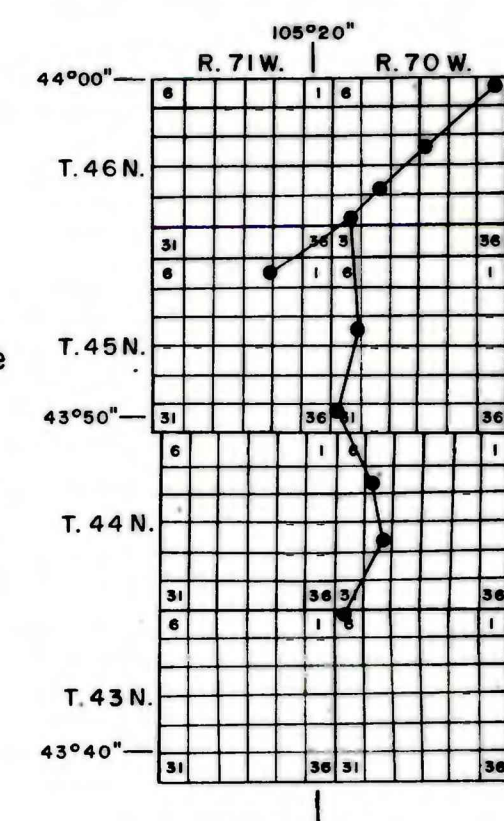
Smith-Federal No. 1  
SW 1/4 NW 1/4 Section 15, T. 46N., R. 70W.  
Altitude 4769 feet



No. 1 Brunel-Federal  
NE 1/4 Section 1, T. 46N., R. 70W.  
Altitude 4818 feet



Top of the Fox Hills Sandstone chosen as follows: 1) from resistivity logs as described in text, R, 2) from density logs for two wells, D, 3) interpretation of intertonguing based on logs shown.



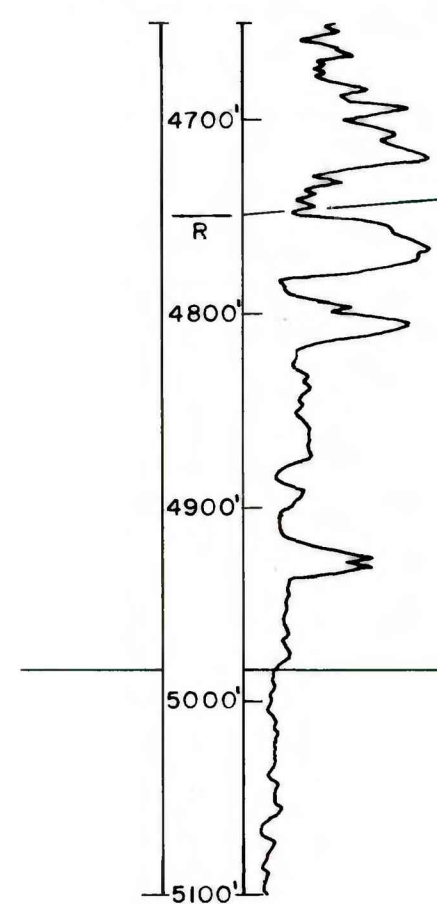
3.25 mi.

1.35 mi.

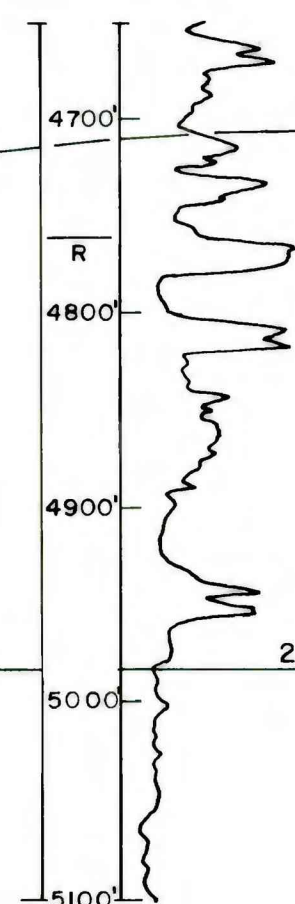
2.15 mi.

3.10 mi.

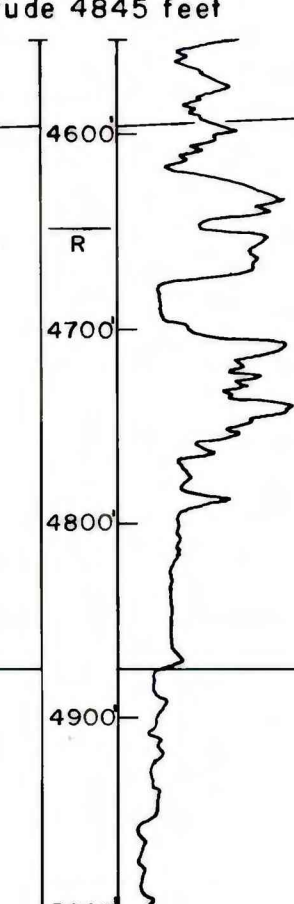
Shanahan-Federal No. 1-6  
NW 1/4 SE 1/4 Section 6, T. 43N., R. 70W.  
Altitude 4727 feet



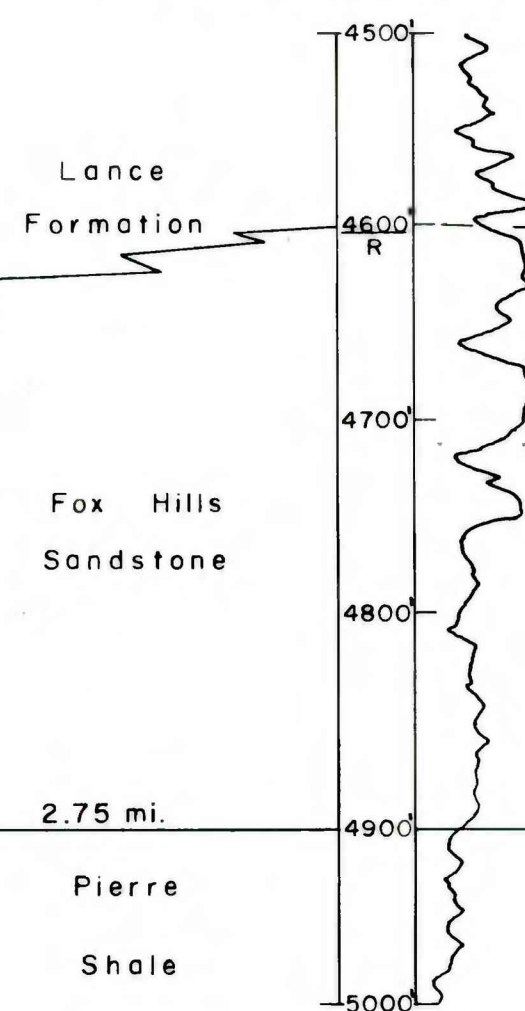
U S -Winn No. 1-20  
NE 1/4 SE 1/4 Section 20, T. 44N., R. 70W.  
Altitude 4908 feet



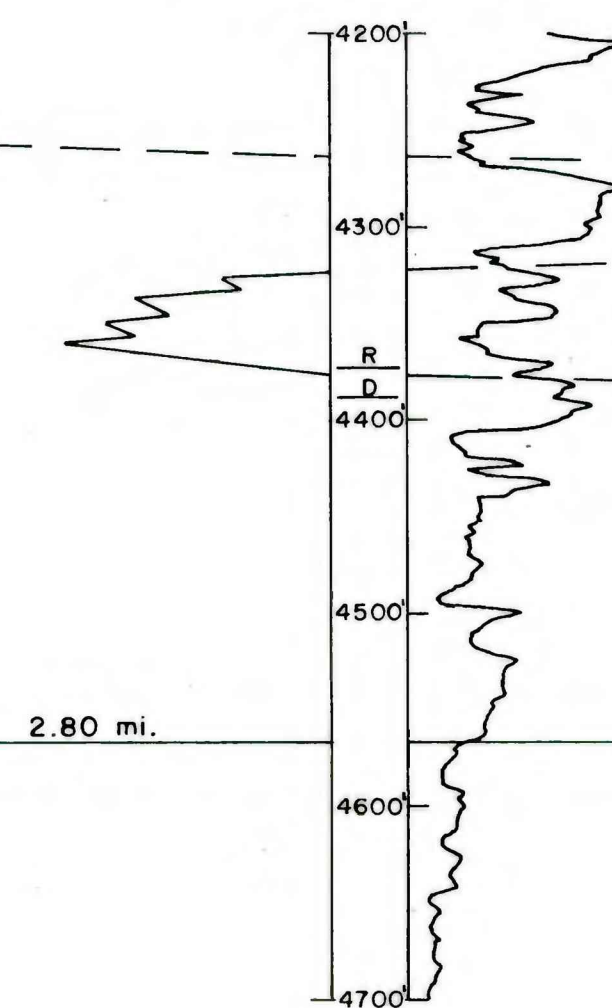
4-Skyline Marilyn  
NW 1/4 SW 1/4 Section 8, T. 44N., R. 70W.  
Altitude 4845 feet



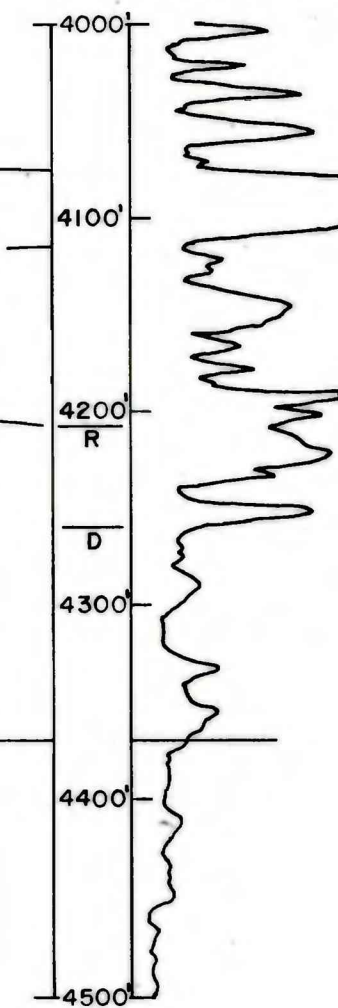
Weimer No. 1  
NW 1/4 NW 1/4 Section 31, T. 45N., R. 70W.  
Altitude 4886 feet



Ellenbogen No. 1  
SE 1/4 NE 1/4 Section 18, T. 45N., R. 70W.  
Altitude 4737 feet



No. 1-φ-30  
SW 1/4 SE 1/4 Section 30, T. 46N., R. 70W.  
Altitude 4646 feet



2.85 mi.

2.00 mi.

2.75 mi.

2.80 mi.

3.65 mi.