

COMPLETE BOUGUER GRAVITY MAP YELLOWSTONE-ISLAND PARK REGION

IDAHO-MONTANA-WYOMING

EXPLANATION

CONTOUR INTERVAL 2.5 MGALS

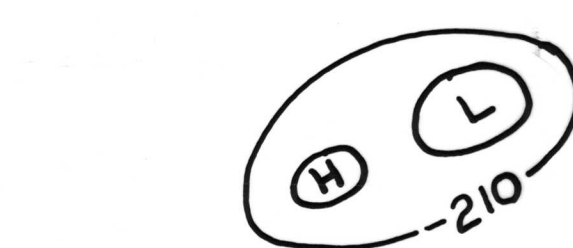
REDUCTION DENSITY 2.67 GM/CM³

Gravity Stations Shown by Open Circles (o)

Datum is Observed Gravity at USCGS BM X-11 (1923),

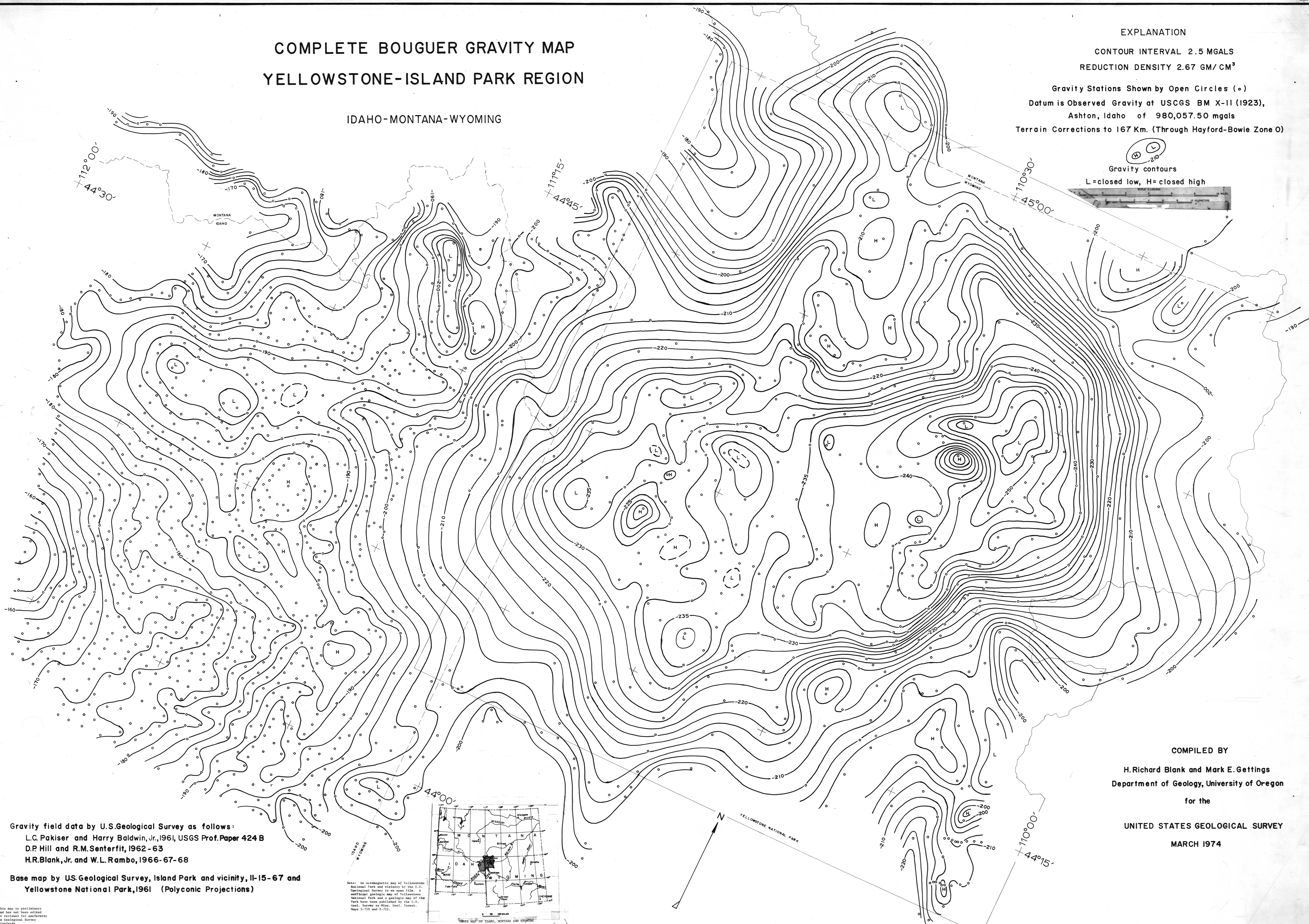
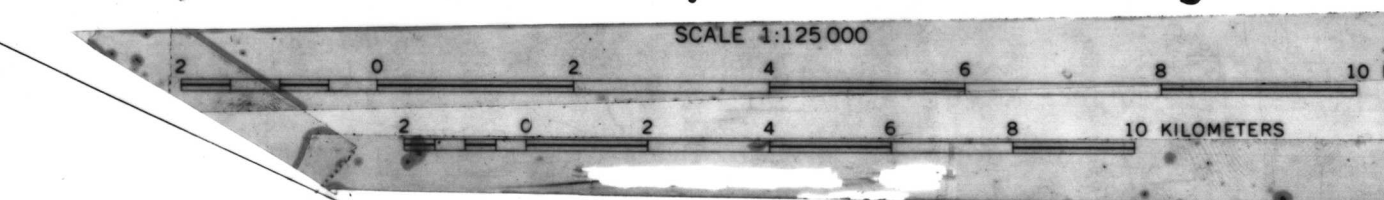
Ashton, Idaho of 980,057.50 mgals

Terrain Corrections to 167 Km. (Through Hayford-Bowie Zone O)



Gravity contours

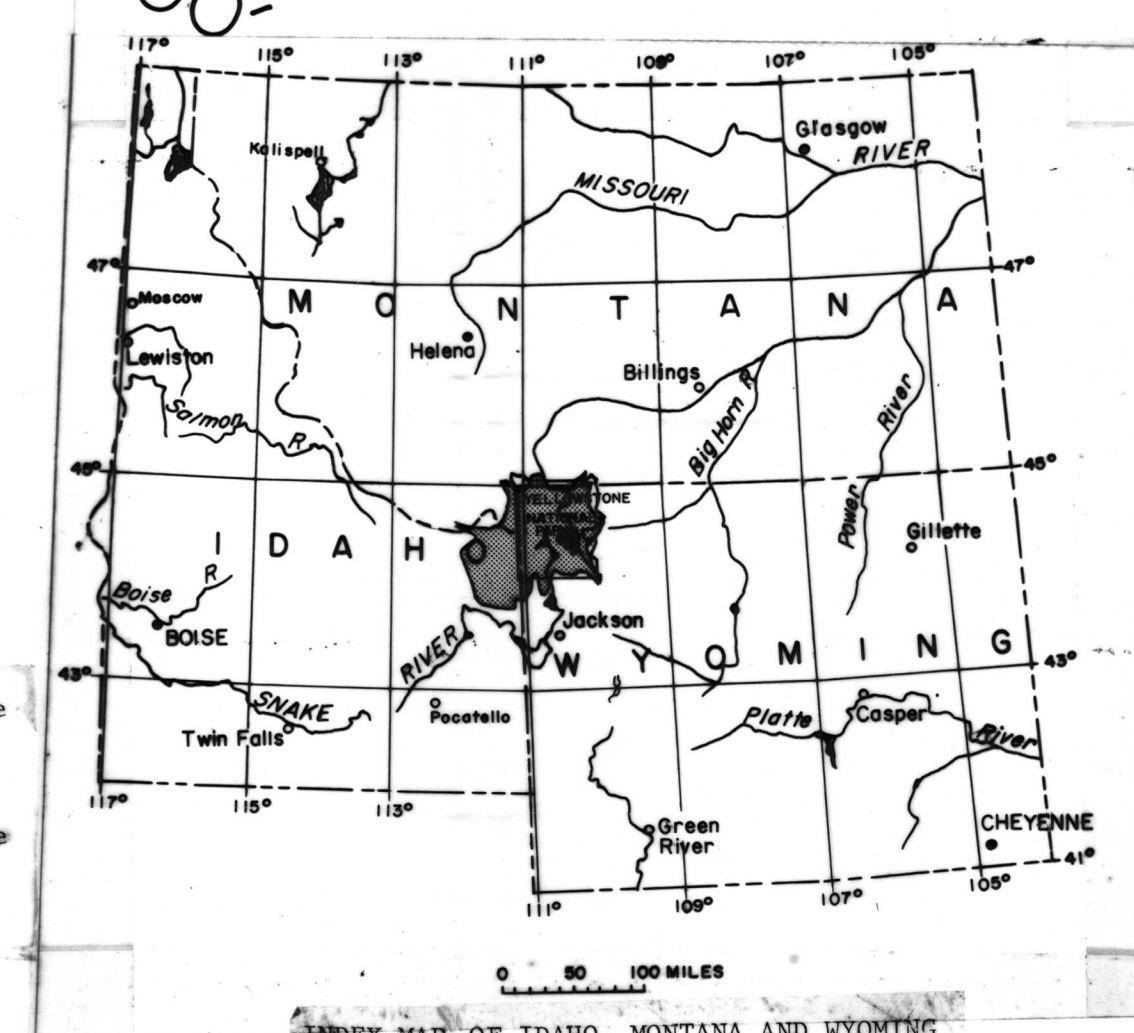
L=closed low, H=closed high



Gravity field data by U.S. Geological Survey as follows:
 L.C. Pakiser and Harry Baldwin, Jr., 1961, USGS Prof. Paper 424 B
 D.P. Hill and R.M. Senterfit, 1962-63
 H.R. Blank, Jr. and W.L. Rambo, 1966-67-68

Base map by U.S. Geological Survey, Island Park and vicinity, 11-15-67 and
 Yellowstone National Park, 1961 (Polyconic Projections)

Note: An aeromagnetic map of Yellowstone National Park and vicinity by the U.S. Geological Survey is in open file. A surficial geologic map of Yellowstone National Park and a geologic map of the Park have been published by the U.S. Geol. Survey as Misc. Geol. Invest. Maps 1-710 and 1-711.



COMPILED BY

H. Richard Blank and Mark E. Gettings
 Department of Geology, University of Oregon
 for the

UNITED STATES GEOLOGICAL SURVEY

MARCH 1974