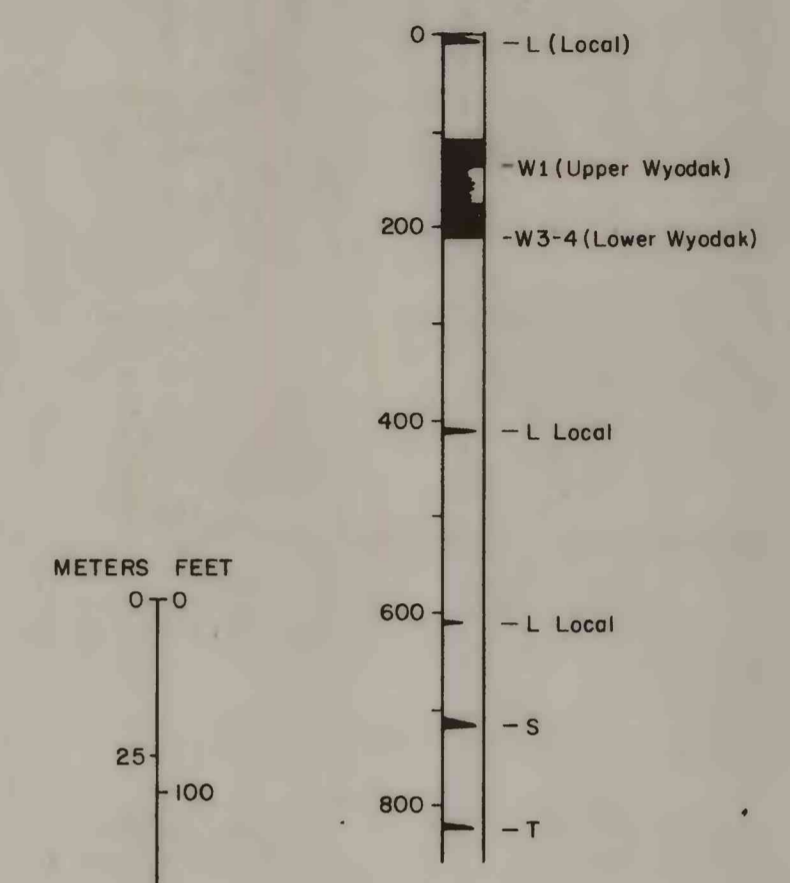


GENERALIZED COAL INDEX SECTION



EXPLANATION

- Sec. 9 - Location
 - Pan. Am. - Operator
 - I State - Well name
 - (2) - index number shown on map
 - 90 - Cased, no record
 - 120 - No coal
 - 4 - Possible coal
 - 15 - Thickness of coal
- Depth, in feet, from 320 surface to top of coal

All intervals in feet (to convert to meters multiply by 0.3048)

CORRELATION OF COALS FROM SUBSURFACE DATA IN THE FORTIN DRAW QUADRANGLE, CAMPBELL COUNTY, WYOMING