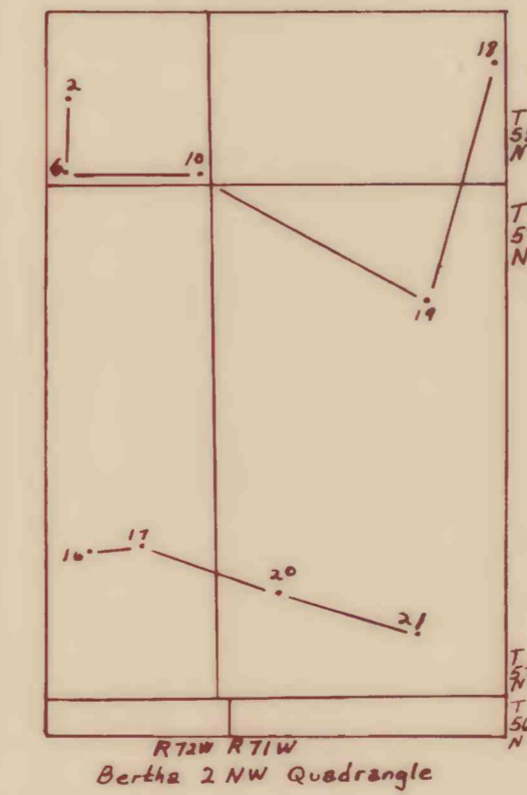
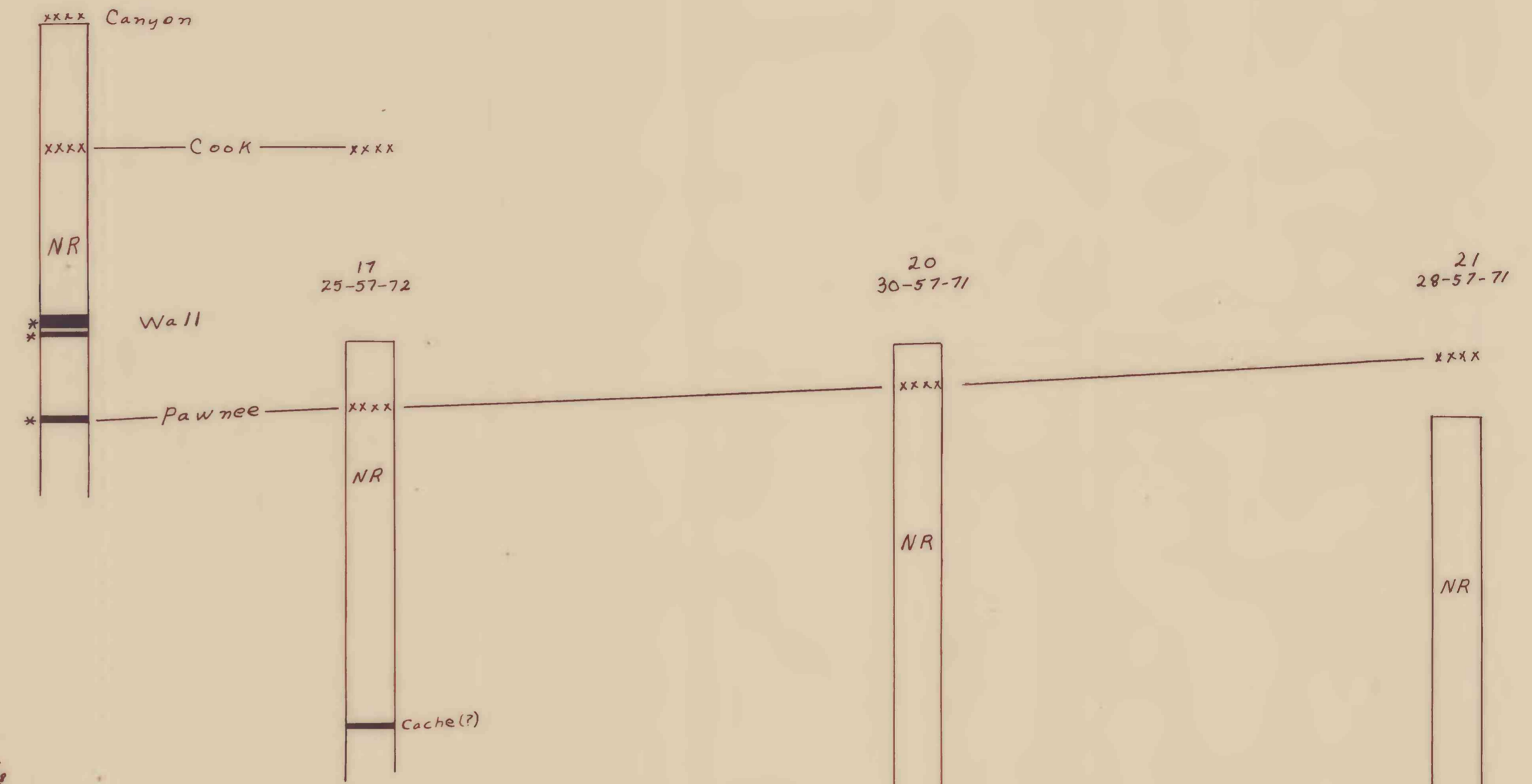
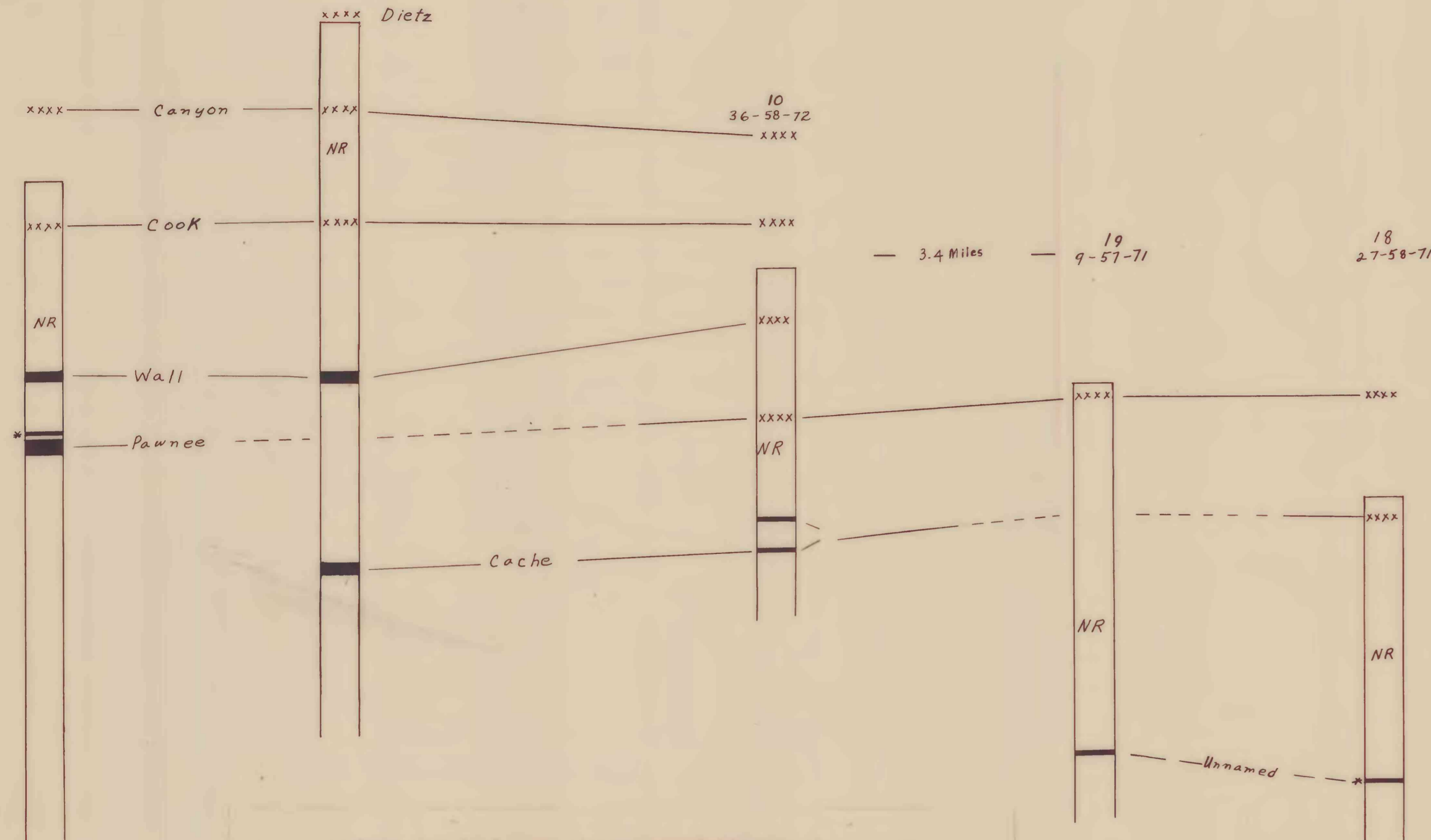


2
26-58-72

6
35-58-72

16
26-57-72



XXX Coal projected from outcrop
NR No record
* Questionable coal bed
■ Coal, interpreted from electric log of drill hole

Table 1.—Thickness and depth in feet of correlated coal beds in representative holes drilled in Bertha 2 NW quadrangle

Well number on map	Well name	Ground elevation from map, ft.	Canyon		Cook		Wall		Pawnee		Cache		Unnamed				
			Thick-ness	Depth	Thick-ness	Depth	Thick-ness	Depth	Thick-ness	Depth	Thick-ness	Depth	Thick-ness	Depth			
1	Davis Oil Co. 1 Shellhead	3627	SB	--	SB	--	SB	--	SB	--	SB	--	SB	--	67	2133	
2	Stag Oil Producers 1 Red-Fed.	3647	SB	--	SB	--	SB	--	SB	--	SB	--	SB	--	172	3152	
3	Davis Oil Co. 1 Red-Fed.	3920	SB	--	SB	--	SB	--	SB	--	SB	--	SB	--	--	--	
4	Davis Oil Co. 3 Music	3930	SB	--	SB	--	SB	--	SB	--	SB	--	SB	--	--	--	
5	Davis Oil Co. 4 Red-Fed.	4005	SB	--	SB	--	SB	--	SB	--	SB	--	SB	--	--	--	
6	Davis Oil Co. 1 Red-Fed.	4010	SB	--	SB	--	SB	--	SB	--	SB	--	SB	--	11	3651	
7	Great Western Drilling Co. 1 N. P.	4030	SB	--	SB	--	SB	--	SB	--	SB	--	SB	--	8	3610	
8	Great Western Drilling Co. 3 N. P.	3937	SB	--	SB	--	SB	--	SB	--	SB	--	SB	--	--	--	
9	Great Western Drilling Co. 4 N. P.	3975	SB	--	SB	--	SB	--	SB	--	SB	--	SB	--	--	--	
10	Anderson Oil Co. 4 Elephant State	3745	SB	--	SB	--	SB	--	SB	--	SB	--	SB	--	3	3504	
11	Anderson Oil Co. 1 Elephant State	3910	SB	--	SB	--	SB	--	SB	--	SB	--	SB	--	--	--	
12	Davis Oil Co. 5 A. Hunter	3872	SB	--	SB	--	SB	--	SB	--	SB	--	SB	--	--	--	
13	Phillips Pet. Co. C-3 Hunter	3860	SB	--	SB	--	SB	--	SB	--	SB	--	SB	--	6	3677	
14	Stetair Oil & Gas Co. 1 Olmstead	3742	SB	--	SB	--	SB	--	SB	--	SB	--	SB	--	--	123	3307
15	Atlantic Oil Co. 2 Olmstead	3820	SB	--	SB	--	SB	--	SB	--	SB	--	SB	--	57	3320	
16	Davis Oil Co. 5 Heritage-Fed.	3903	SB	--	SB	--	SB	--	SB	--	SB	--	SB	--	157*	3660	
17	Far West Trading Co. 1 Gov't.	3636	SB	--	SB	--	SB	--	SB	--	SB	--	SB	--	--	3	3313
18	McCullough Oil Corp. of Calif. 1 Broadus	3515	SB	--	SB	--	SB	--	SB	--	SB	--	SB	--	--	3	3223
19	McCullough Oil Corp. 1 Gov't. Lang	3636	SB	--	SB	--	SB	--	SB	--	SB	--	SB	--	--	4	3254
20	Ellbogen Gov't. 1 Allied Mat. Corp.	3630	SB	--	SB	--	SB	--	SB	--	SB	--	SB	--	--	6	2994
21	Powder River Oil Co. 15-28 Fed. Delco, W.	3569	SB	--	SB	--	SB	--	SB	--	SB	--	SB	--	--	6	2919

1/ Ground elevations shown and shown on map do not necessarily coincide with those reported by operator.

2/ Names and correlations of coal beds are tentative.

3/ Thickness of coal beds were determined from electric logs by H. N. Brown and T. M. Schell of the U.S. Geological Survey. NR indicates no record because of well casing. SB indicates that well top is below level of bed. * indicates bed contains one or more partings (reported thickness excludes thickness of partings).

WELL AND SUBSURFACE CORRELATIONS
PRELIMINARY GEOLOGIC MAP OF THE BERTHA 2 NW QUADRANGLE, CAMPBELL COUNTY, WYOMING

By
E. J. McKay
1974

U.S. Geological Survey
OPEN FILE REPORT
This illustration is preliminary and has not been edited or reviewed for conformity with Geological Survey standards or nomenclature.