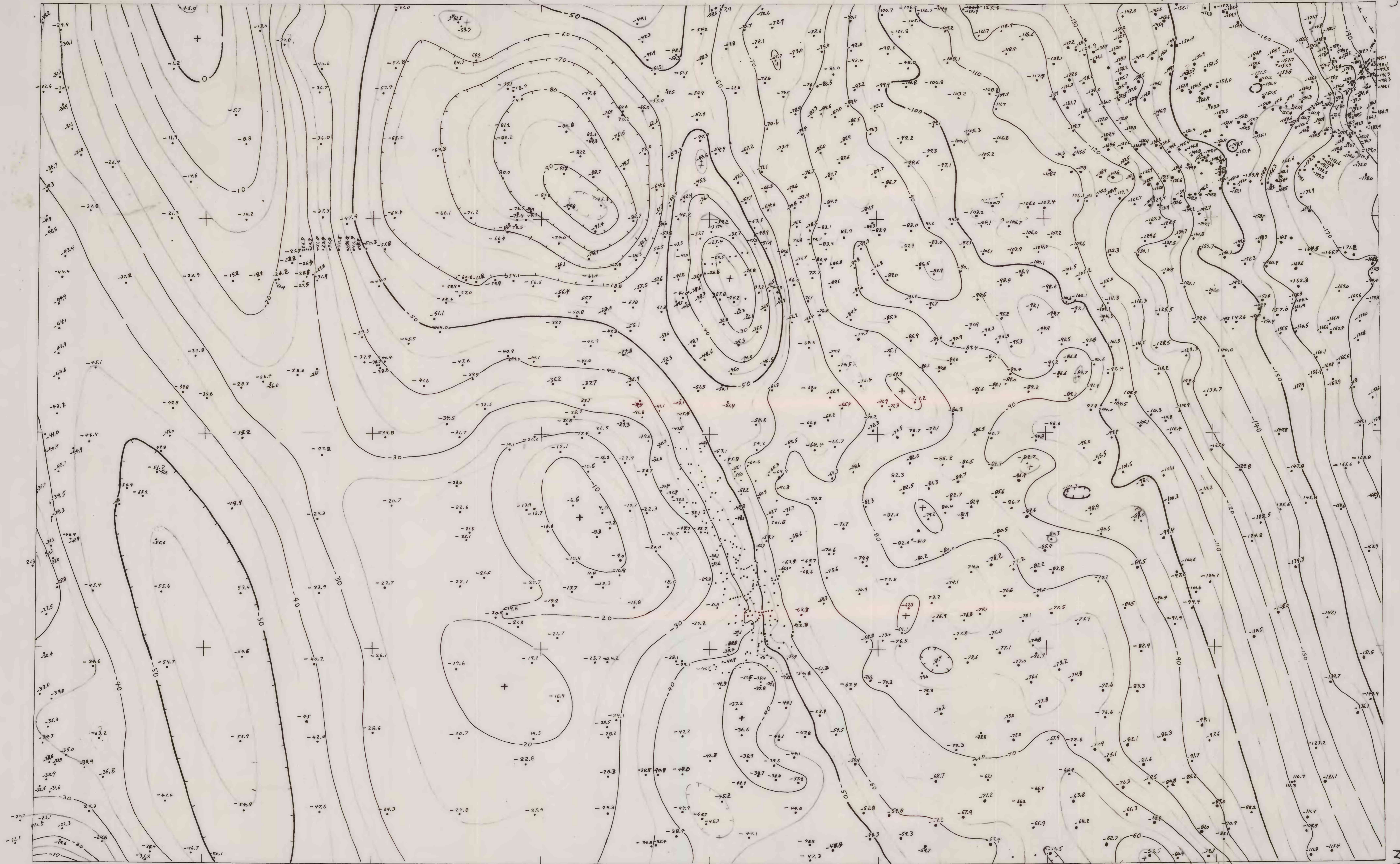


122°

TOP

120°

39°



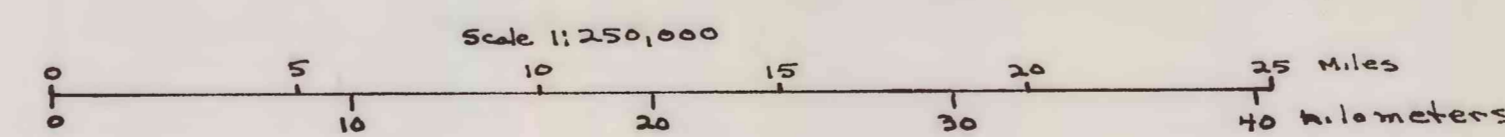
38°

327 Gravity station showing Bouguer anomaly in mgal

Bouguer reduction density = 2.67 g/cm³

Includes terrain corrections to a distance of 166.7 km

Contour interval is 5 mgal



Includes data SW of Lake Tahoe of A. Loomis, near Lake of R. Chapman, and near Sacramento of S. Gosh, and near Pine Hill of A. Griscom.

Preliminary Bouguer gravity map of the Sacramento 1° x 2° quadrangle, California

by H.W. Oliver and S.L. Robbins

1974

SACRAMENTO

This map is preliminary and has not been reviewed for conformity with U.S. Geological Survey standards and nomenclature.