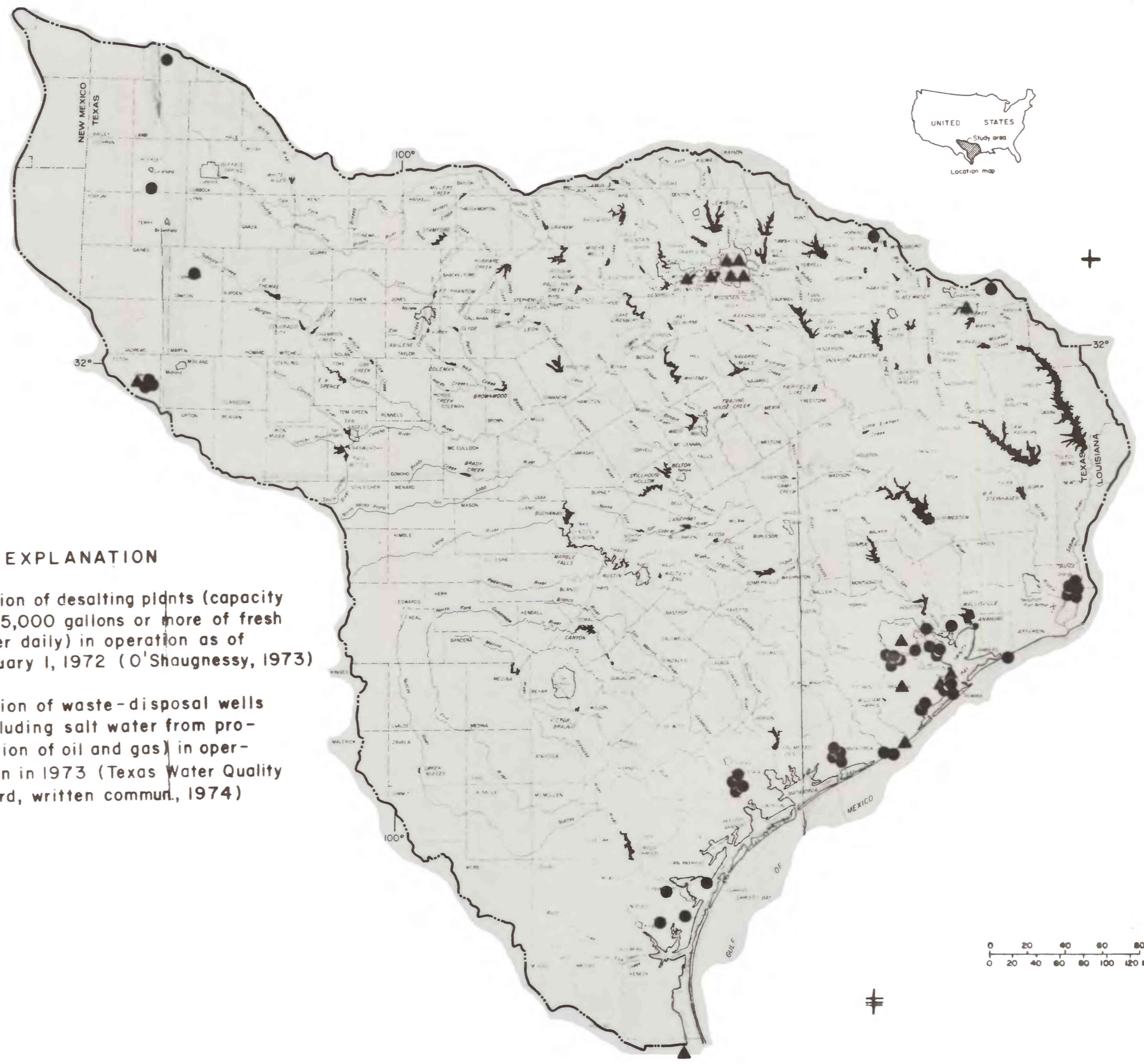


(200)  
R290  
no. 74-331



**EXPLANATION**

- ▲ Location of desalting plants (capacity of 25,000 gallons or more of fresh water daily) in operation as of January 1, 1972 (O'Shaughnessy, 1973)
- Location of waste-disposal wells (excluding salt water from production of oil and gas) in operation in 1973 (Texas Water Quality Board, written commun., 1974)

Base from U.S. Geological Survey  
State base map, 1:2,000,000

FIGURE 7.-Locations of desalting plants and liquid waste disposal sites

