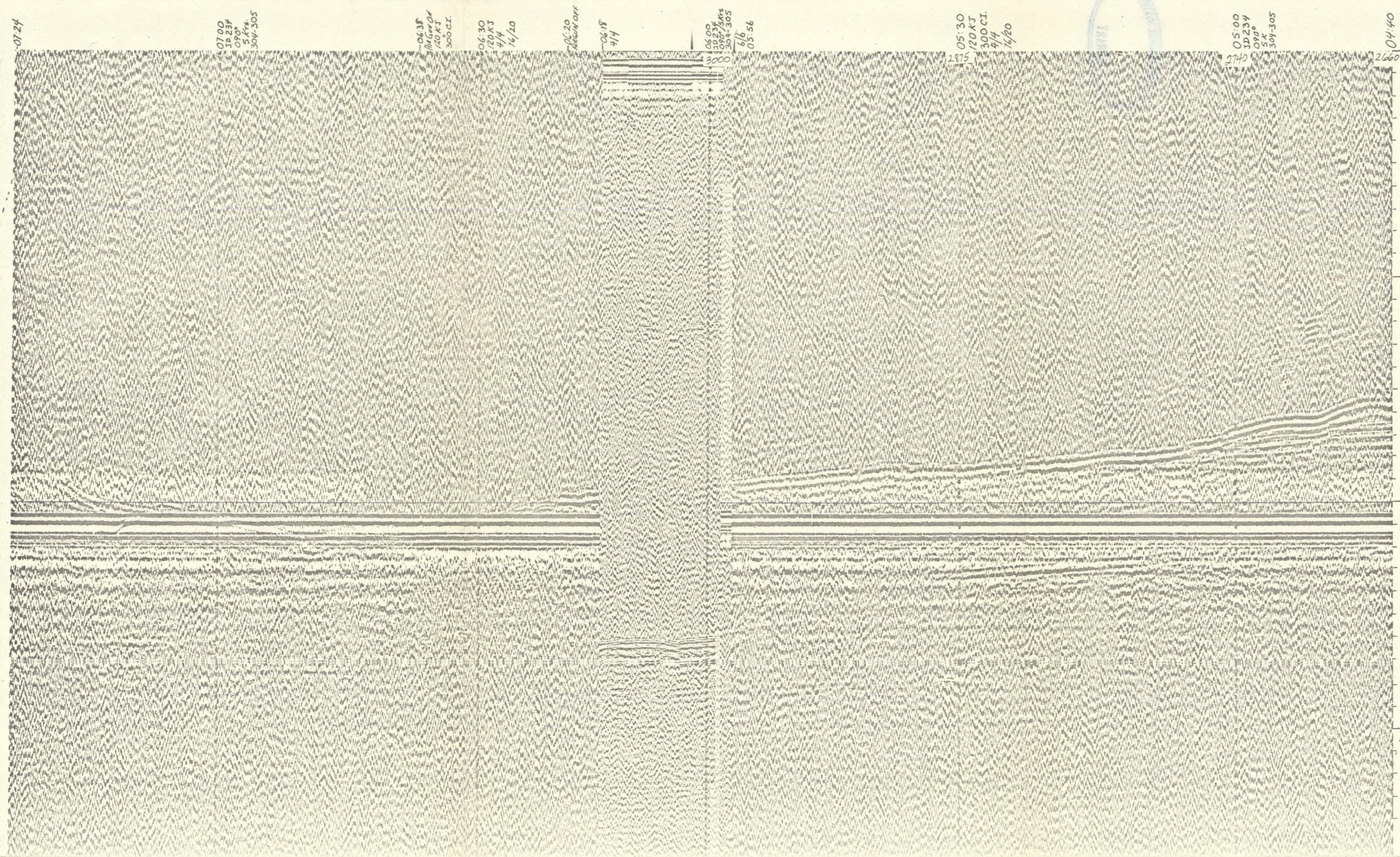


(200)
R29
NO. 1944

END LINE 304-305



07:00
JD 234
090°
5 Kn
304-305

06:38
120 KT
300 CI
1/20

06:30
120 KT
44
1/20

06:20
120 KT
44

06:18
44

06:09
120 KT
300 CI
1/20
304-305

05:56
66

05:30
120 KT
300 CI
44
1/20

05:00
JD 234
090°
5 Kn
304-305

04:40

2
WATER DEPTH
IN METER

3

0

1 SEC.
TWO-WAY TIME

LEG
304-305
DATE & TIME (ALASKA DAYLIGHT TIME)
Aug. 22 (JD 234) 0440-0724
COURSE (DEGREES FROM TRUE NORTH)
090°

SPEED (KNOTS)
5 Kn.

SWEEP RATE (SECONDS)
0440-0556 4 sec.
0556-0618 6 sec.
0618-0724 4 sec.

POWER (KILOJULES/CUBIC INCHES OF AIR)
0440-0620 120/300
0620-0638 120/0
0638-0724 120/300

FILTER SETTINGS (HIGH & LOW LIMITS IN HERTZ)
76/20

Profile released without editorial and technical
review for conformity to Geological Survey standards.