

END LINE 312-313

JD 236
1300
174° 6K
312-313
T-10

1230
160 KT
4/4 60/20

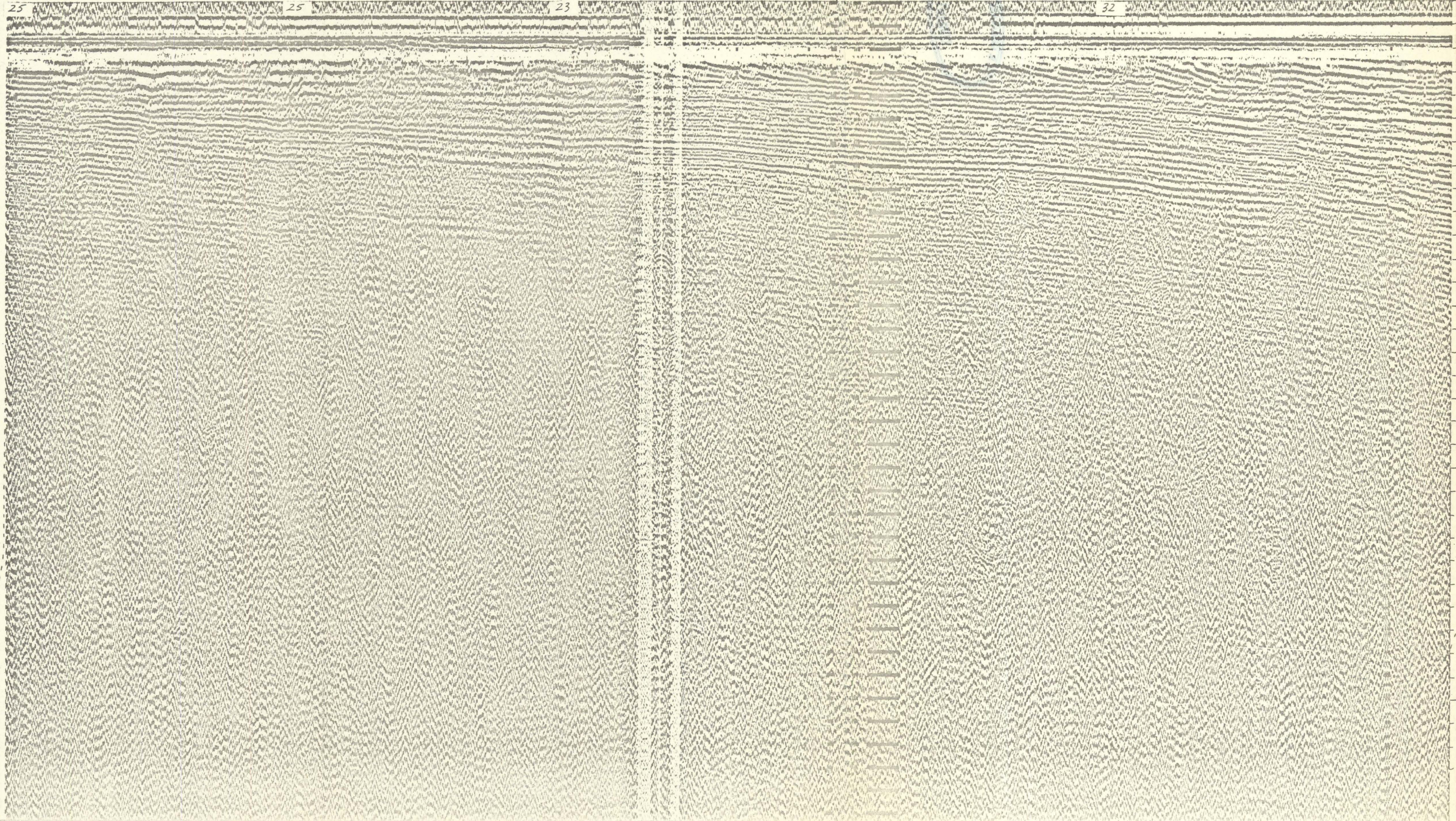
236
1200
174° 6K
312-313
T-010

1130
100KJ
0.25
4/4
60/20

236/1100
174°
6K
312-313
T-010

1030
160KJ
0.25
4/4
60/20
1023

WATER DEPTH
IN METERS



3 SEC.
TWO-WAY TIME

R290
No. 1944

LEG
312-313
DATE & TIME (ALASKA DAYLIGHT TIME)
AUG 24 (JD 236) 1023-1300
COURSE (DEGREES FROM TRUE NORTH)
174°

SPEED (KNOTS)
6 kn

SWEEP RATE (SECONDS)
4 sec.

FIRE RATE (SECONDS)
4 sec.

POWER (KILOJULES/CUBIC INCHES OF AIR)
160/0

FILTER SETTINGS (HIGH & LOW LIMITS IN HERTZ)
60/20

Profile released without editorial and technical
review for conformity to Geological Survey standards.