

(200)
R290
NO. 1911

0414

24/1000
033°
044
322-333
T023

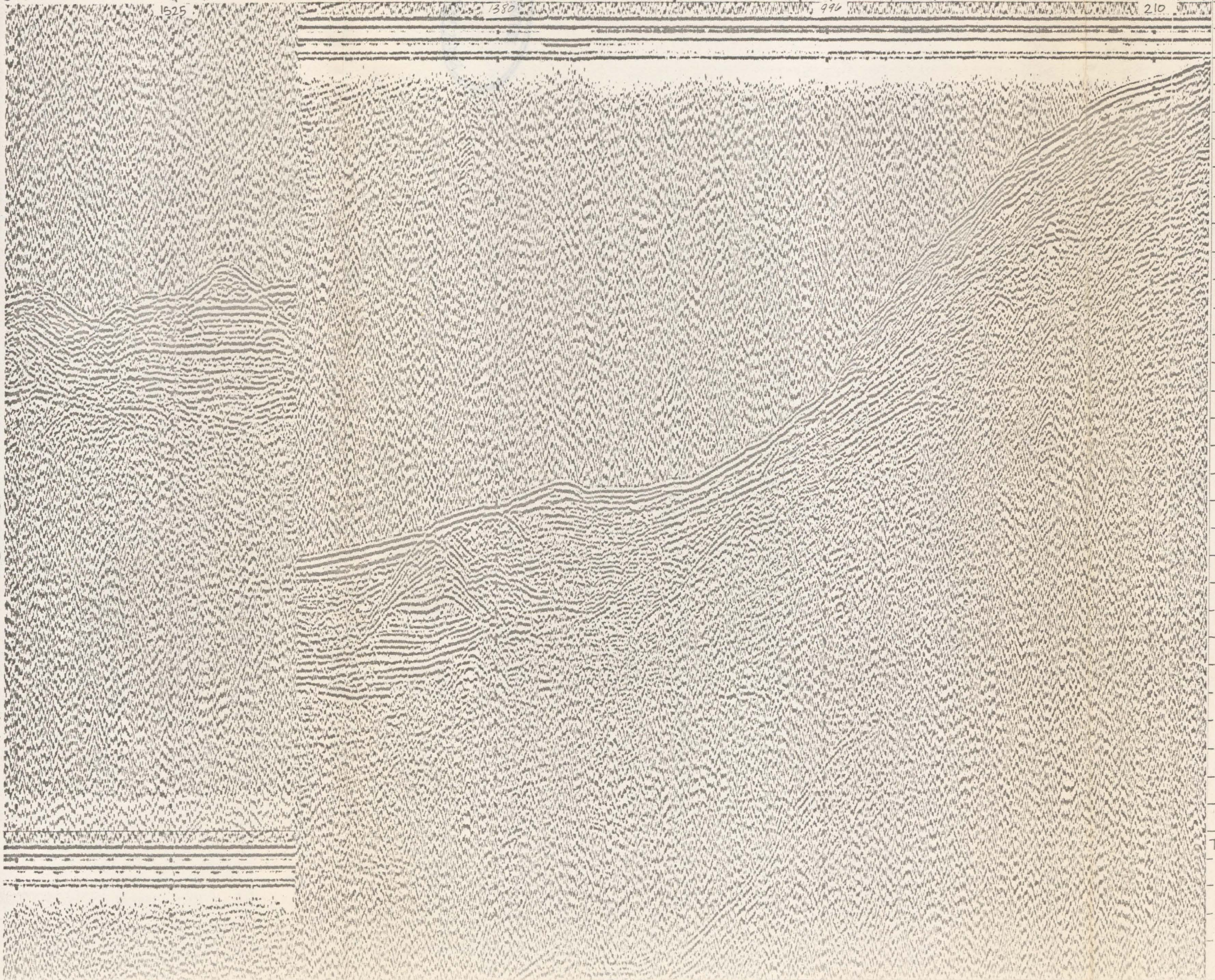
0310
1604
033°
4/4
60/20

MAN AND
BLISS
4/4
033°

24/1000
020°
044
322-333
T023
AIRGUN
OFF
T023

0230
1604
033°
4/4
60/20

WATER DEPTH
IN METERS



LEG
332-333

DATE & TIME (ALASKA DAYLIGHT TIME)
AUG 29 (JD. 241) 0225-0414

COURSE (DEGREES FROM TRUE NORTH)
0225-0314 020°
0314-0414 033° Maneuvering in ice

SPEED (KNOTS)
6 kn.

SWEEP RATE (SECONDS)
4 sec.

FIRE RATE (SECONDS)
4 sec.

POWER (KILOJULES/CUBIC INCHES OF AIR)
0225-0250 160/300
250-0414 160/0

FILTER SETTINGS (HIGH & LOW LIMITS IN HERTZ)
60/20

Profile released without editorial and technical review for conformity to Geological Survey standards.

END LINE 332-333