

END LINE 351-352

0719

7/20

4/16

4/20

JD 245
0600 6K
0710 6K
0815 352
T-036

6/20

0630
160 KT
4/4 6025

JD 245
0600 6K
0710 6K
0815 352
T-036

0530
160 KT
4/4 6025
C/S 6 KTS

C/C 082°
0520

JD 245
0600 6K
0710 6K
0815 352
T-036

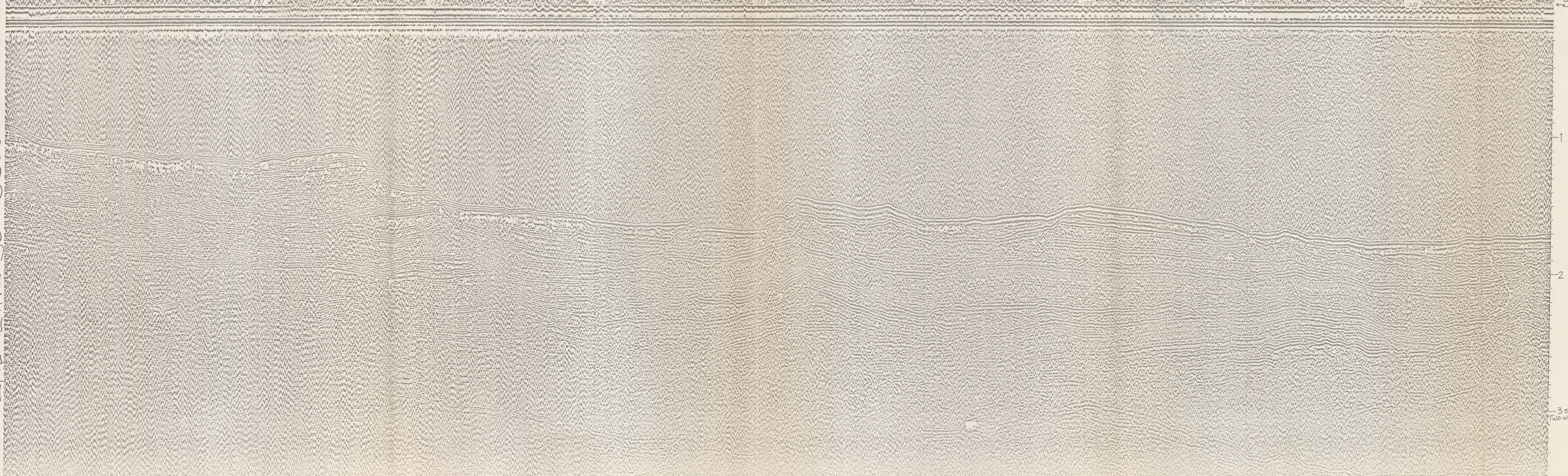
0530
160 KT
4/4 6025

JD 245
0600 6K
0710 6K
0815 352
T-036

0330
160 KT
0/1 4/4
6025

0600 6K
0710 6K
0815 352
T-036

0234



WATER DEPTH IN METERS

LEG
 351-352
 DATE & TIME (ALASKA DAYLIGHT TIME)
 SEPT. 2 (JD 245) 0234-0719

COURSE (DEGREES FROM TRUE NORTH)
 0234-0520 090°
 0520-0719 082°

SPEED (KNOTS)
 0234-0530 8 kn
 0530-0719 6 kn

SWEEP RATE (SECONDS)
 4 sec

FIRE RATE (SECONDS)
 4 sec

POWER (KILOJULES/CUBIC INCHES OF AIR)
 160/c

FILTER SETTINGS (HIGH & LOW LIMITS IN HERTZ)
 0234-0650 60/25
 0650-0710 60/20
 0710-0712 47/20
 0712-0715 47/16
 0715-0719 47/20

Profile released without editorial and technical review for conformity to Geological Survey standards.

3 SEC
 TWO-WAY TIME

(200)
 R298
 N6. 1944
 35
 35