

(200)  
Ra90  
No. 1944

0828

0800  
JD250  
150°  
4 Kt.  
366-367  
1831

4/16/50

1051  
KASBARZ

0730  
1600  
0/1  
0/1  
0/1  
0/1

1051

4/16/50

4 Kts.

250000  
180°  
1600  
1600  
1600  
1600

154

4/16/50

4 Kts.

0130  
1600  
0/1  
0/1  
0/1

154

4/16/50

4 Kts.

250000  
170°  
1600  
1600  
1600

130

4/16/50

4 Kts.

0530  
1600  
0/1  
0/1  
0/1

99

4/16/50

4 Kts.

250000  
190°  
1600  
1600  
1600

99

4/16/50

4 Kts.

WATER DEPTH  
IN METERS

LEG  
366-367  
DATE & TIME (ALASKA DAYLIGHT TIME)  
SEPT 7 (J.D.250) 0449-0828

COURSE (DEGREES FROM TRUE NORTH)  
0449-0648 190°  
0648-0654 185°  
0654-0720 180°  
0720-0742 170°  
0742-0828 150°

SPEED (KNOTS)  
0449-0615 6 kn.  
0615-0711 5 kn.  
0711-0828 4 kn.

SWEEP RATE (SECONDS)  
4 sec.

FIRE RATE (SECONDS)  
4 sec.

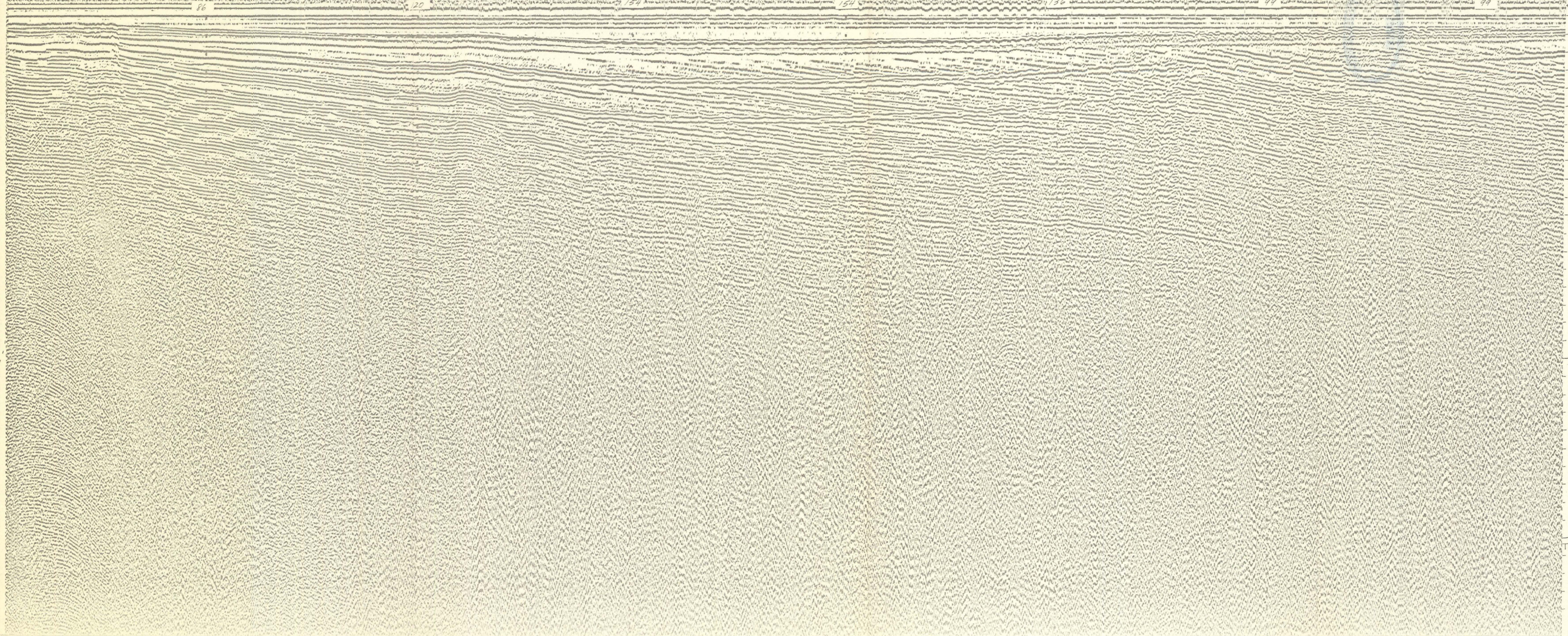
POWER (KILOJULES/CUBIC INCHES OF AIR)  
160/0

FILTER SETTINGS (HIGH & LOW LIMITS IN HERTZ)  
60/25

Profile released without editorial and technical  
review for conformity to Geological Survey standards.

3 SEC.  
TWO-WAY TIME

END LINE 366-367



U.S. GEOLOGICAL SURVEY  
HAIRY/CHROCH SEA, SEISMIC REFLECTION PROFILES, 1973  
U.S.G.C.C. FORM ISLAND

U.S. GEOLOGICAL SURVEY  
OPEN-FILE REPORT, 1974