

(200)  
R290  
No. 19411

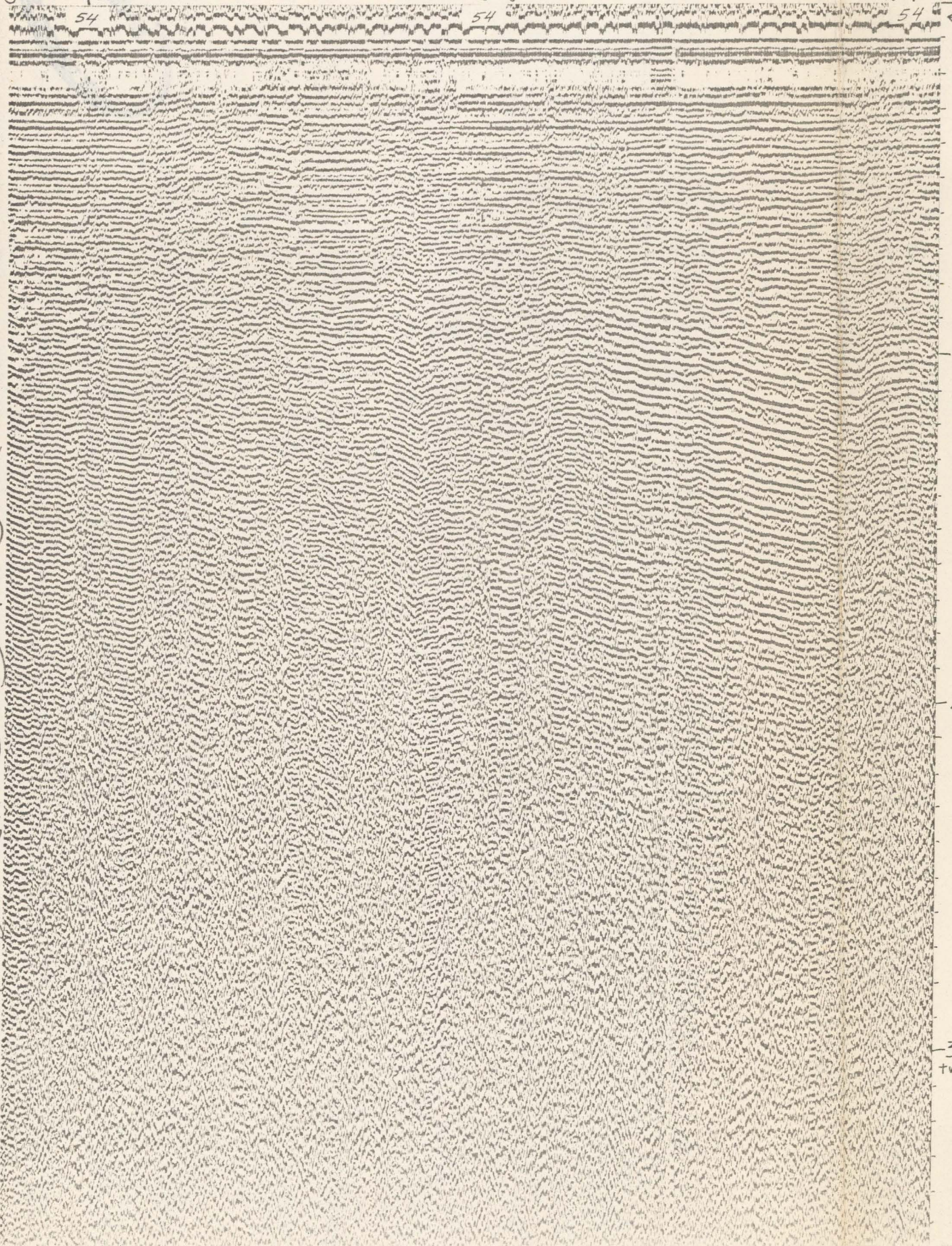
0305  
JD 253  
0300  
117° T.8 K  
371-372  
T-060

0230  
160 KJ  
4/4 60/20

JD 253  
0200  
117° T.8 K  
371-372

WATER DEPTH  
IN METERS

END LINE 371-372



LEG

371-372

DATE & TIME (ALASKA DAYLIGHT TIME)

SEPT 10 (JD 253) 0158-0305

COURSE (DEGREES FROM TRUE NORTH)

117°

SPEED (KNOTS)

8 kn.

SWEEP RATE (SECONDS)

4 sec

FIRE RATE (SECONDS)

4 sec.

POWER (KILOJULES/CUBIC INCHES OF AIR)

160/0

FILTER SETTINGS (HIGH & LOW LIMITS IN HERTZ)

60/20

Profile released without editorial and technical

review for conformity to Geological Survey standards.

3 sec  
two-way time