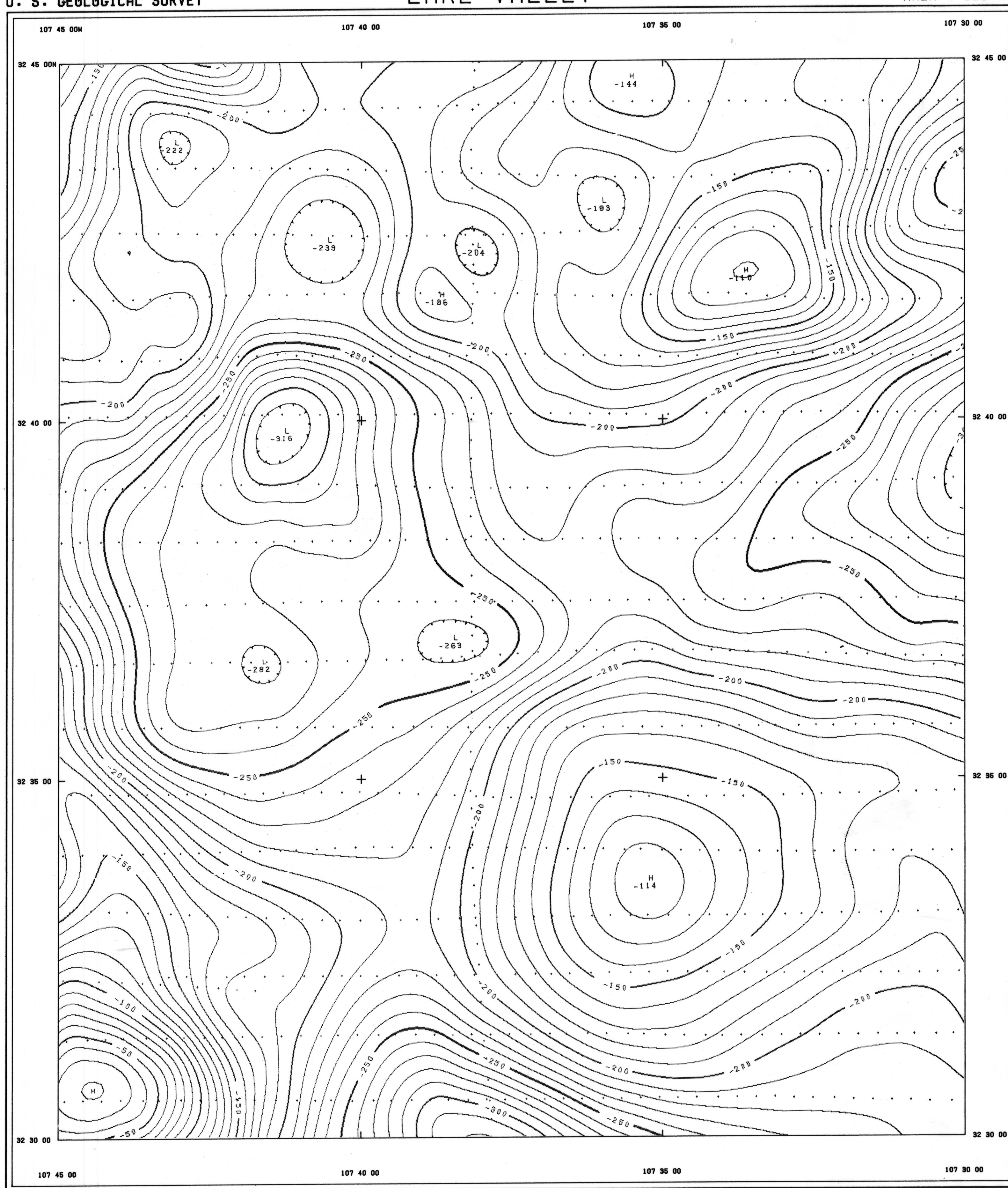


U. S. GEOLOGICAL SURVEY

LAKE VALLEY

AREA 4 SOUTH



RESIDUAL MAGNETIC INTENSITY

AREA 4

SW NEW MEXICO

U. S. GEOLOGICAL SURVEY

7S

CONTRACTED & FLOWN BY:
AERIAL SURVEYS, LTD.

COMPILED BY:
geoMetrics

SCALE 1:62,500
STATUTE MILES

CONTOUR INTERVAL 10.0 GAMMAS
DATUM 51,62.69 GAMMAS
FLIGHT LINE SPACING 1.0 MILE(S)
FLIGHT ALTITUDE 10,000 FEET ASL
FLOWN AND COMPILED 1973

..... FLIGHT PATH SHOWING LOCATION AND
SPACING OF DATA

A REGIONAL TREND OF 0.35 GAMMAS/MILE NORTH
AND 3.13 GAMMAS/MILE EAST EXISTED AND WAS
REMOVED USING THE 1955 IGRF UPDATED TO 1973