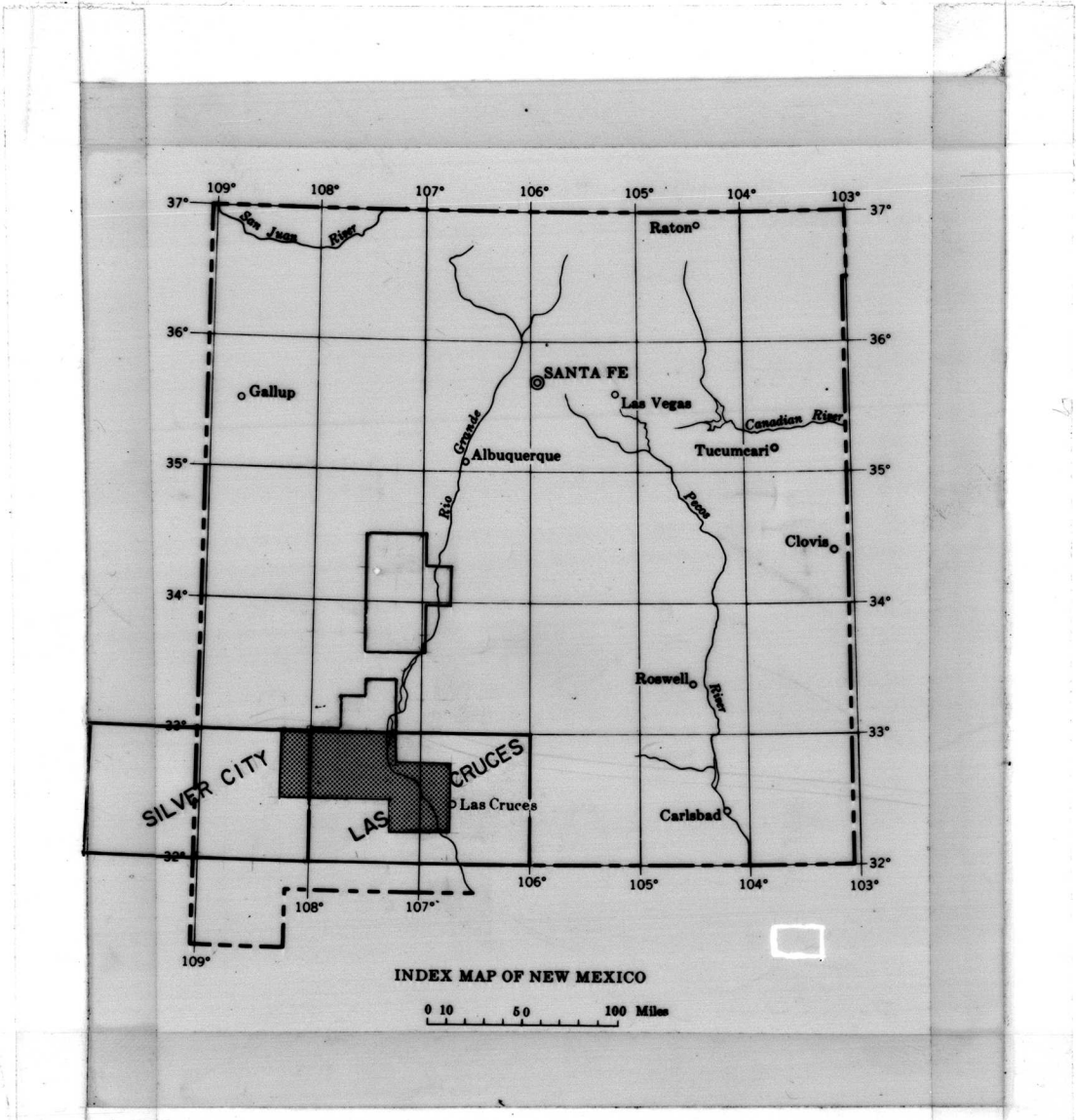


PREPARED IN COOPERATION WITH THE
NEW MEXICO BUREAU OF MINES AND MINERAL RESOURCES

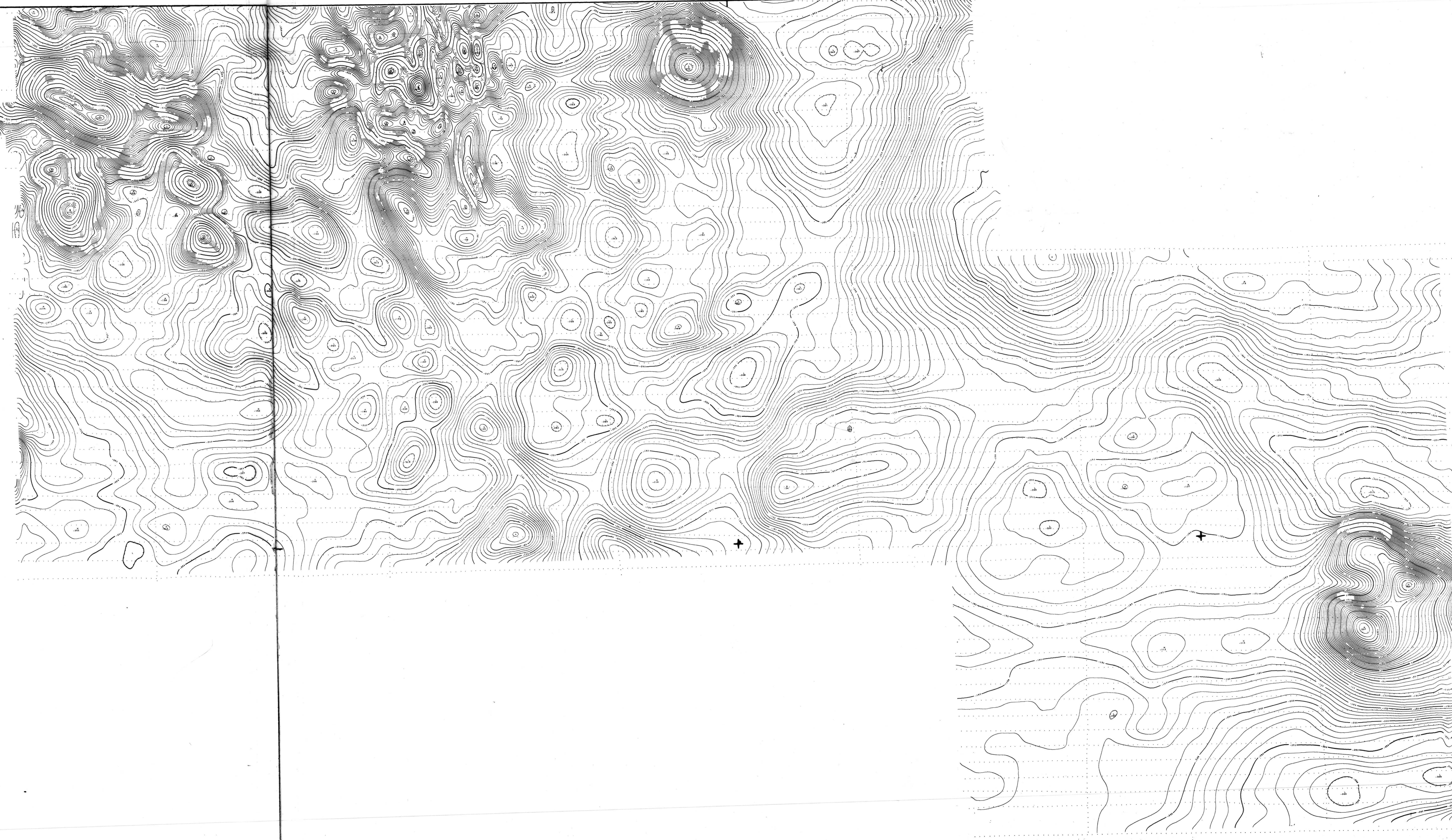
SILVER CITY

LAS CRUCES



INDEX MAP SHOWING LOCATION OF SOUTHWESTERN
NEW MEXICO AEROMAGNETIC MAPS OPEN FILED IN
1974. THIS REPORT SHOWN.

FOR SILVER CITY QUADRANGLE
A REGIONAL TREND OF 9.37 GAMMAS/MILE NORTH
AND 3.34 GAMMAS/MILE EAST EXISTED AND WAS
REMOVED USING THE 1965 IGRF UPDATED TO 1973
DATUM 50,414.97 GAMMAS

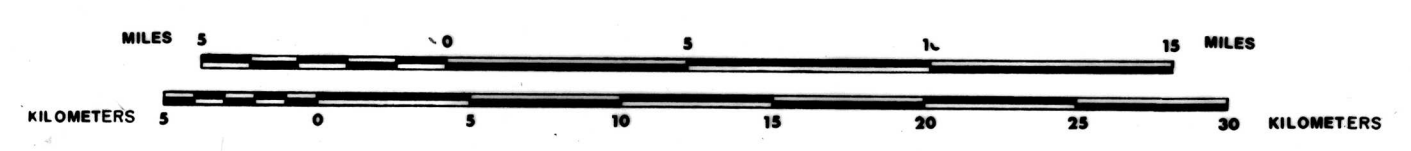


FOR LAS CRUCES QUADRANGLE
A REGIONAL TREND OF 9.37 GAMMAS/MILE NORTH
AND 3.21 GAMMAS/MILE EAST EXISTED AND WAS
REMOVED USING THE 1965 IGRF UPDATED TO 1973
DATUM 50,792.33 GAMMAS

1S	2S	3S	4S
5S	6S	7S	8S
9S	10S	11S	12S

Copies of 12 S aeromagnetic maps,
location shown at left, at 1:62,500
scale may be obtained at requester's
expense from: U.S. Geol. Survey
Office, Rm. 1012 Federal Bldg.
Denver, Colo. 80202

SCALE 1:250,000



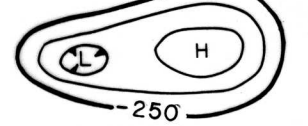
FLIGHT PATH SHOWING LOCATION AND
SPACING OF DATA
CONTOUR INTERVAL 10.0 GAMMAS
FLIGHT LINE SPACING 1.0 MILE(S)
FLIGHT ALTITUDE 10,000 FEET ASL
FLOWN AND COMPILED 1973

This map is preliminary
and has not been edited
or reviewed for conformity
to Geological Survey
standards.

CONTRACTED & FLOWN BY:
AERIAL SURVEYS, LTD.
COMPILED BY:
geoMetrics

AEROMAGNETIC MAP OF PARTS OF THE SILVER CITY AND LAS CRUCES 1° by 2°
QUADRANGLES, SOUTHWESTERN NEW MEXICO
1974

EXPLANATION



Magnetic contours showing total intensity magnetic field of the earth in gammas relative to listed datum.
Hachured to indicate closed areas of lower magnetic intensity. L, magnetic low; H, magnetic high.