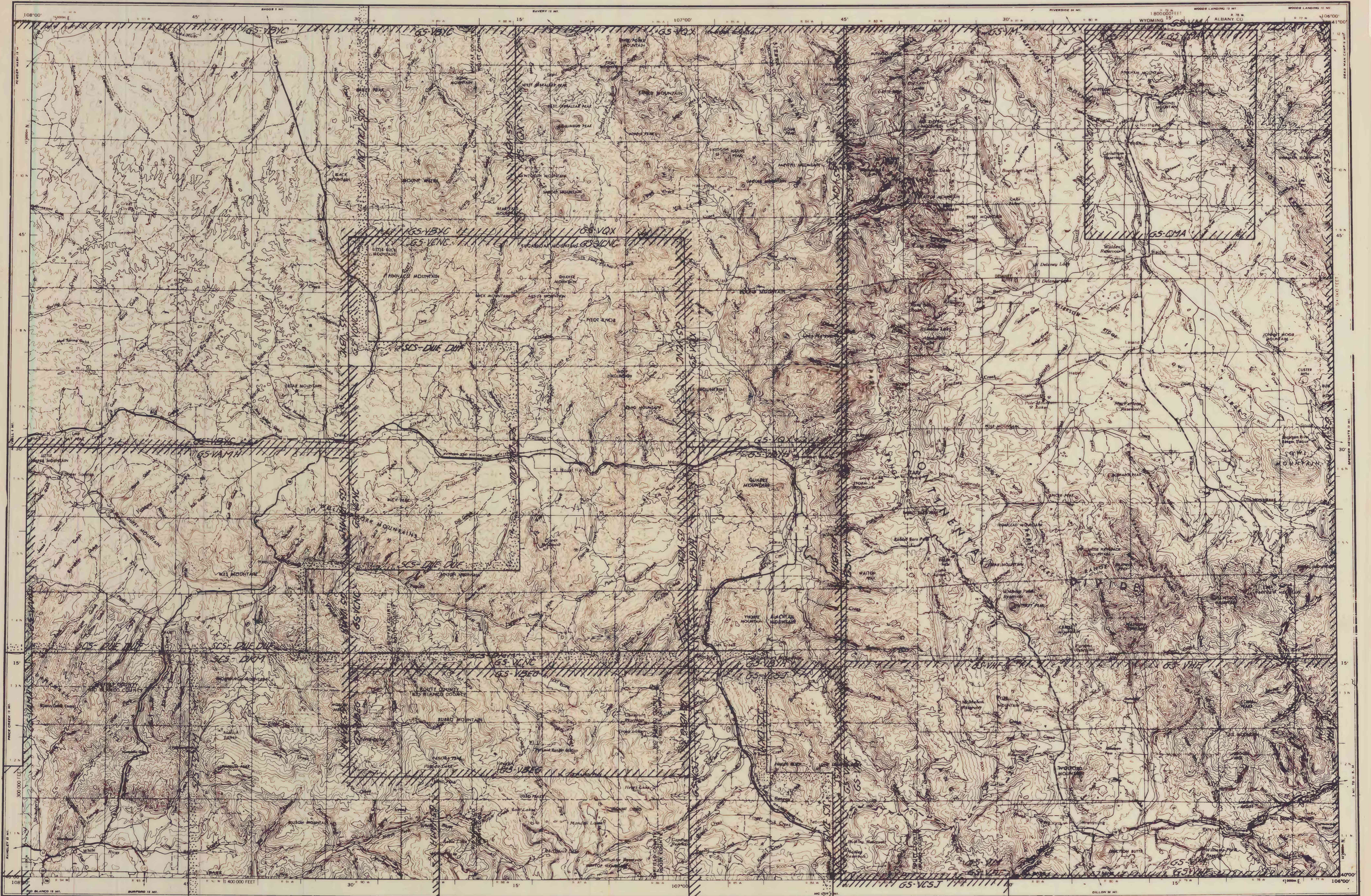


2014
75-42
062



Base map from U.S. Geological Survey, 1954-62

LEGEND
ROAD DATA 1954 PARTIALLY REVISED 1962
Figures in red denote approximate distances in miles between stars

POPULATED PLACES

Over 500,000	LOS ANGELES
100,000 to 500,000	OMAHA
25,000 to 100,000	GALVESTON
5,000 to 25,000	Laramie
1,000 to 5,000	Grand Coulee
Less than 1,000	Sun Valley

ROADS

Hard surface, heavy duty	Two lanes wide	Federal route marker
Hard surface, medium duty	More than two lanes wide	State route marker
Improved light duty	Two lanes wide	State route marker
Unimproved dirt	Trail	

RAILROADS

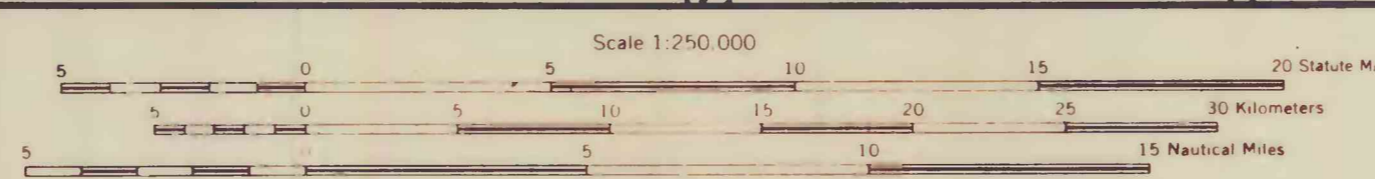
Single track	Double or Multiple
Subsidiary gauge	Standard gauge
Narrow gauge	

BOUNDARIES

International	State	County	Mark of reservation
Landing area	Seaplane airport	Seaplane anchorage	Woods brushwood

Landmarks: School, Church, Other, I 1

Horizontal control point	Spot elevation in feet
Marsh	Intermittent or dry stream



CONTOUR INTERVAL 200 FEET
WITH SUPPLEMENTARY CONTOURS AT 100 FOOT INTERVALS
TRANSVERSE MERCATOR PROJECTION

LOCATION DIAGRAM FOR NK 13-10

NK 12-5	NK 12-6	NK 13-4	NK 13-5	NK 13-6
NK 12-8	NK 12-9	NK 13-7	NK 13-8	NK 13-9
NK 12-11	NK 12-12	NK 13-10	NK 13-11	NK 13-12
NK 12-13	NK 12-14	NK 13-13	NK 13-14	NK 13-15
NK 12-16	NK 12-17	NK 13-16	NK 13-17	NK 13-18

SECTIONIZED TOWNSHIP

6	5	4	3	2	1
7	8	9	10	11	12
13	14	15	16	17	18
19	20	21	22	23	24
25	26	27	28	29	30
31	32	33	34	35	36

Photography by
U.S. Geological Survey (GS) and Soil
Conservation Service (SCS)

See sheet 4 for explanation.

INDEX MAPS SHOWING AVAILABLE TOPOGRAPHY AND AERIAL PHOTOGRAPHY
FOR CRAIG 1°x2° QUADRANGLE, COLORADO AND WYOMING

Compiled by Irving J. Witkind and James W. Keogh,
assisted by Jerald R. Grocock