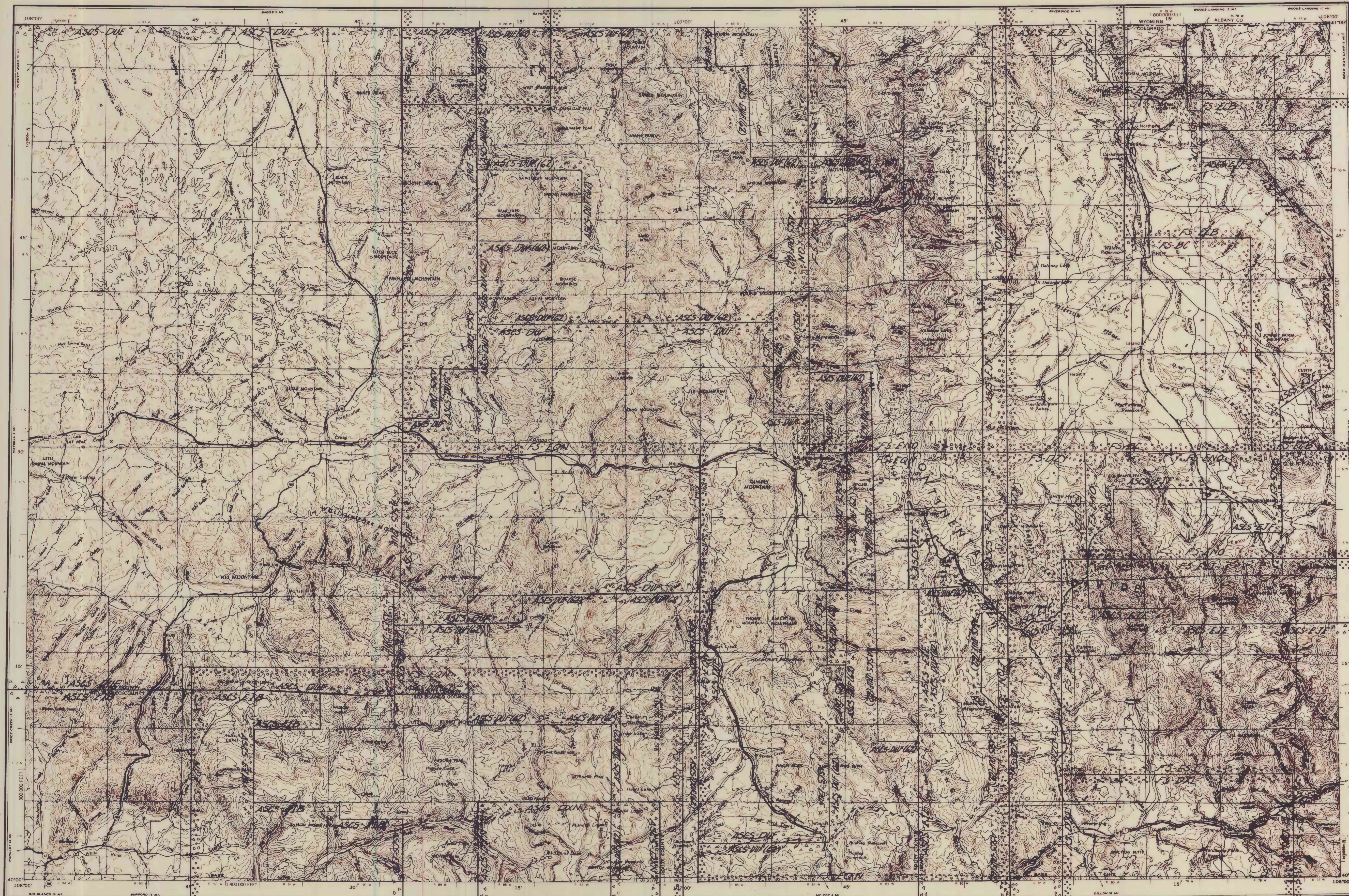


75-42  
062



Base map from U.S. Geological Survey, 1954-62

**LEGEND**  
ROAD DATA 1954 PARTIALLY REVISED 1962  
Figures in red denote approximate distances in miles between stars

**POPULATED PLACES**  
Over 500,000  
100,000 to 500,000  
25,000 to 100,000  
5,000 to 25,000  
1,000 to 5,000  
Less than 1,000

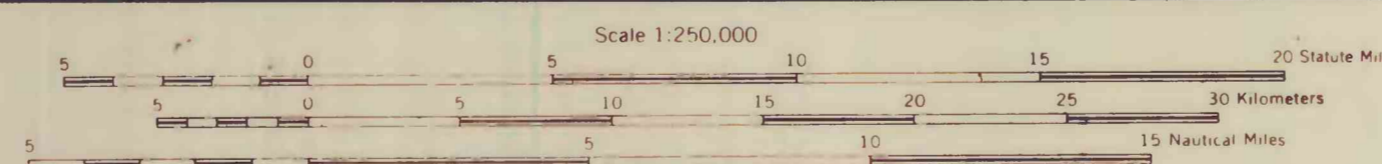
**ROADS**  
Hard surface, heavy duty  
More than two lanes wide  
Two lanes wide, Federal route marker  
Hard surface, medium duty  
More than two lanes wide  
Two lanes wide, State route marker  
Improved light duty  
Unimproved dirt  
Trail

**RAILROADS**  
Single track  
Double or Multiple track  
Landplane airport  
Landing area  
Seaplane airport  
Seaplane anchorage  
Woods brushwood

**BOUNDARIES**  
International  
State  
County  
Park or Reservation

**Other Symbols**  
Landmarks: School, Church, Other  
Horizontal contour point  
Spot elevation in feet  
Marsh  
Intermittent or dry stream  
River line

U.S. Geological Survey  
OPEN FILE REPORT  
This map is preliminary and has not been edited or reviewed for conformity with Geological Survey standards.



CONTOUR INTERVAL 200 FEET  
WITH SUPPLEMENTARY CONTOURS AT 100 FOOT INTERVALS  
TRANSVERSE MERCATOR PROJECTION

1955 MAGNETIC DECLINATION FOR THIS SHEET VARIES FROM 15' EASTERLY FOR THE CENTER OF THE WEST FOOT TO 14' WESTERLY FOR THE CENTER OF THE EAST FOOT. MEAN ANNUAL CHANGE IS 0'04" WESTERLY.

LOCATION DIAGRAM FOR NK 13-10

NK 12-5	NK 12-6	NK 13-4	NK 13-5	NK 13-6
NK 12-8	NK 12-9	NK 13-7	NK 13-8	NK 13-9
NK 12-11	NK 12-12	NK 13-10	NK 13-11	NK 13-12
NK 12-15	NK 12-16	NK 13-14	NK 13-15	NK 13-16

SECTIONIZED TOWNSHIP

6	5	4	3	2	1
7	8	9	10	11	12
13	14	15	16	17	18
19	20	21	22	23	24
25	26	27	28	29	30
31	32	33	34	35	36

Photography by  
U.S. Forest Service (FS) and Agricultural  
Stabilization and Conservation  
Service (ASCS)

See sheet 4 for explanation

INDEX MAPS SHOWING AVAILABLE TOPOGRAPHY AND AERIAL PHOTOGRAPHY  
FOR CRAIG 1°x2° QUADRANGLE, COLORADO AND WYOMING

Compiled by Irving J. Witkind and James W. Keogh,  
assisted by Jerald R. Grocock

1975