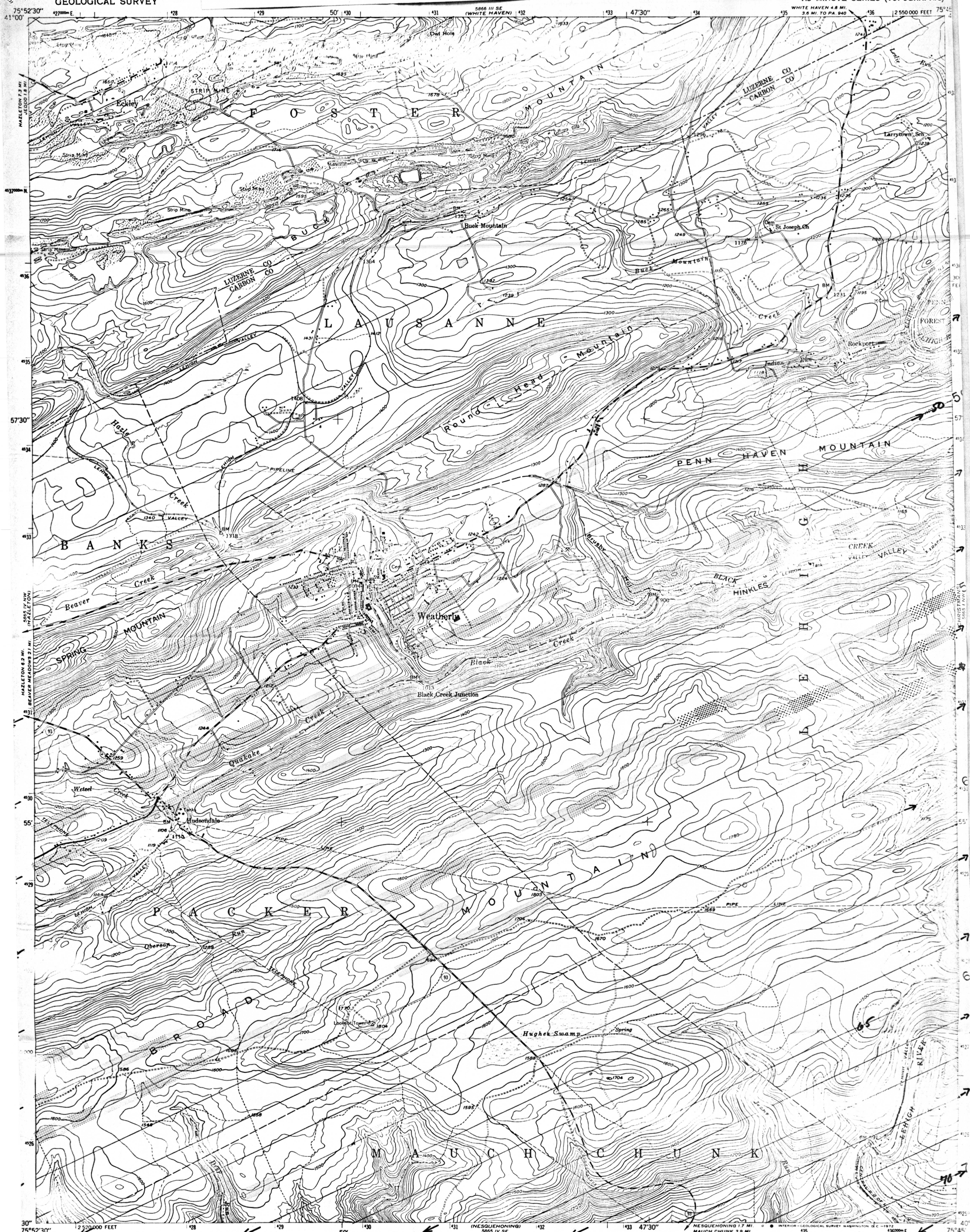
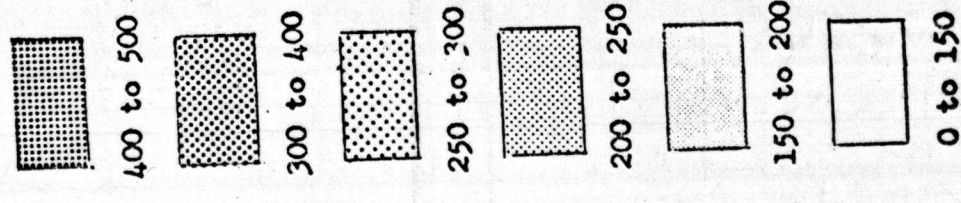


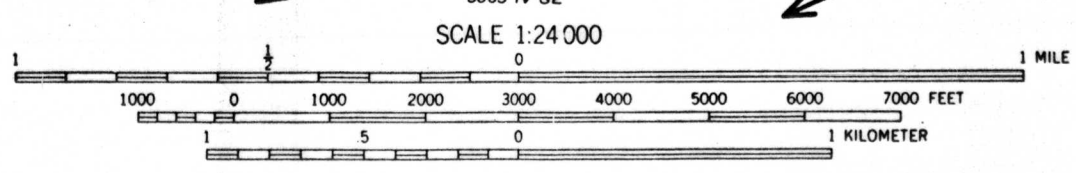
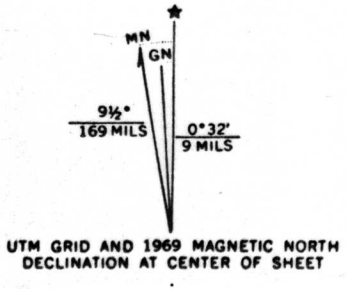
UNITED STATES  
DEPARTMENT OF THE INTERIOR  
GEOLOGICAL SURVEY

WEATHERLY QUADRANGLE  
PENNSYLVANIA  
7.5 MINUTE SERIES (TOPOGRAPHIC)

Explanation  
Approximate ranges of total gamma  
radioactivity recorded along  
flight lines (counts per second)



Mapped, edited, and published by the Geological Survey  
Control by USGS and USC&GS  
Topography from aerial photographs by multiplex methods  
Aerial photographs taken 1942. Field check 1948  
Polyconic projection. 1927 North American datum  
10,000-foot grid based on Pennsylvania coordinate system, north zone  
1000-meter Universal Transverse Mercator grid ticks, zone 18,  
shown in blue  
Revisions shown in purple compiled in cooperation with  
State of Pennsylvania agencies, from aerial photographs taken 1969  
This information not field checked



ROAD CLASSIFICATION  
Heavy-duty ——— Light-duty ———  
Medium-duty ——— Unimproved dirt - - - -  
○ State Route

U.S. Geological Survey  
OPEN FILE REPORT 75-91  
This report is preliminary and has  
not been edited or reviewed for  
conformity with Geological Survey  
standards or nomenclature.

AIRBORNE RADIOACTIVITY SURVEY OF PARTS OF CARBON, SCHUYLKILL,  
AND MONROE COUNTIES, PENNSYLVANIA  
by  
Harry Kleimic and Margaret C. Cooper

WEATHERLY, PA.  
N4052.5-W7545/7.5  
1948  
PHOTOGRAPHED 1969  
AMS 5865 IV NE-SERIES V831