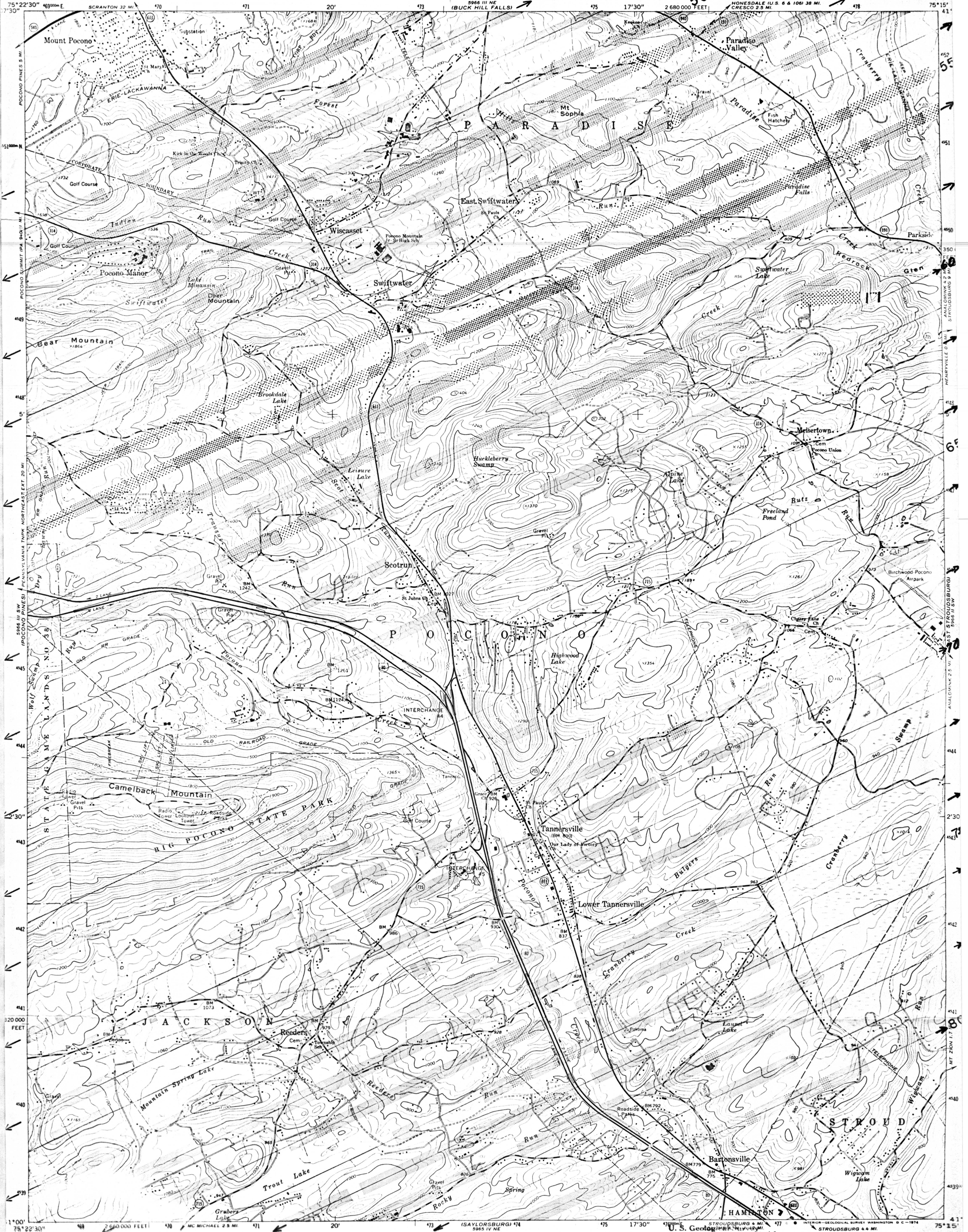
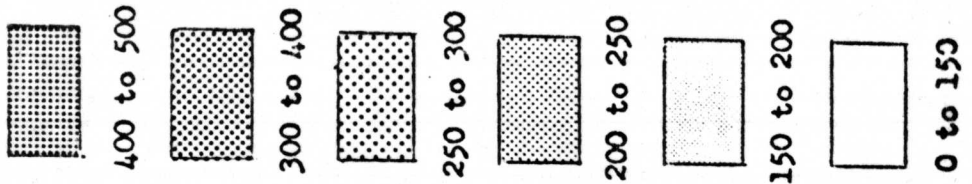
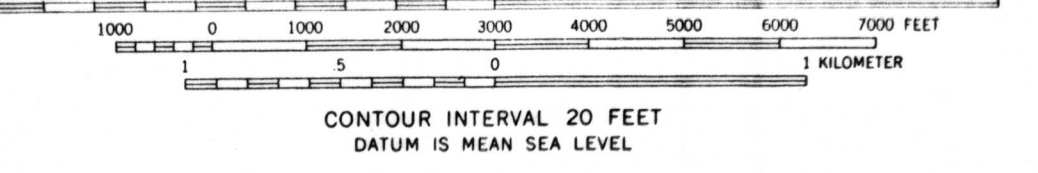
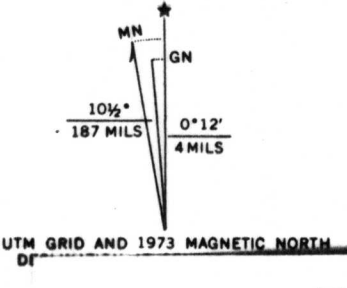


UNITED STATES DEPARTMENT OF GEOLOGY
 ALTH OF PENNSYLVANIA ENVIRONMENTAL RESOURCES DIVISION
 BUCK HILL FALLS SURVEY

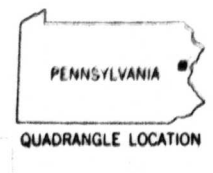
MOUNT POCONO QUADRANGLE
 PENNSYLVANIA-MONROE CO.
 7.5 MINUTE SERIES (TOPOGRAPHIC)



Mapped, edited, and published by the Geological Survey
 Control by USGS and USC&GS
 Topography by photogrammetric methods from aerial photographs taken 1963 and 1965. Field checked 1966
 Polyconic projection. 1927 North American datum
 10,000-foot grid based on Pennsylvania coordinate system, north zone
 1000-meter Universal Transverse Mercator grid ticks, zone 18, shown in blue
 Fine red dashed lines indicate selected fence and field lines where generally visible on aerial photographs. This information is unchecked
 Revision shown in purple compiled in cooperation with State of Pennsylvania agencies from aerial photographs taken 1973. Topographic information is unchanged



OPEN FILE REPORT 75-91
 This report is preliminary and has not been edited or reviewed for conformity with Geological Survey standards or nomenclature.



ROAD CLASSIFICATION
 Heavy-duty ——— Light-duty ———
 Medium-duty ——— Unimproved dirt ———
 Interstate Route — U.S. Route — State Route —

AIRBORNE RADIOACTIVITY SURVEY OF PARTS OF CARBON, SCHUYLKILL, AND MONROE COUNTIES, PENNSYLVANIA
 by Harry Klemic and Margaret C. Cooper

MOUNT POCONO, PA.
 N4100-W7515/7.5
 1966
 PHOTO REPRODUCED 1978
 AMB 5966 III SE - SERIES V811