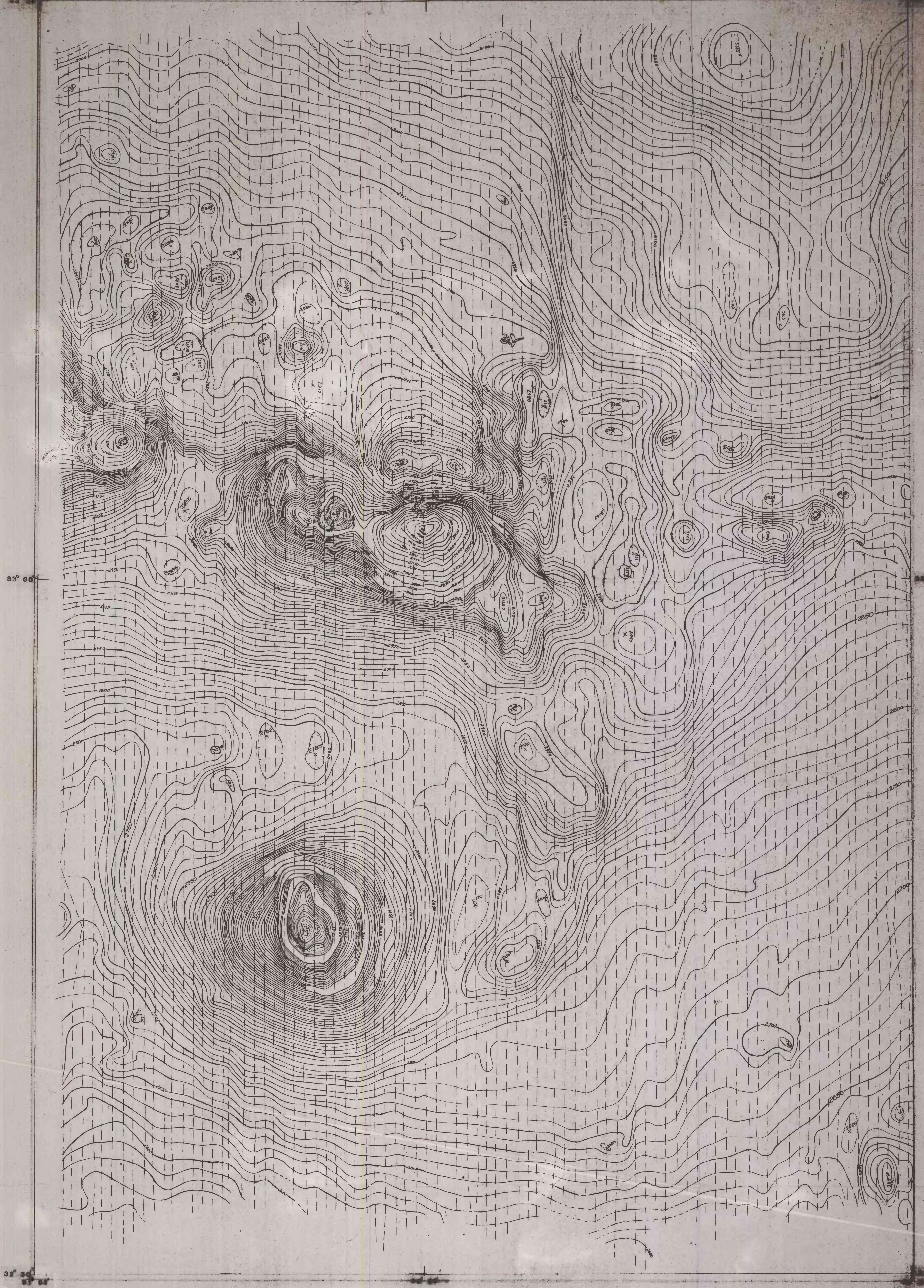
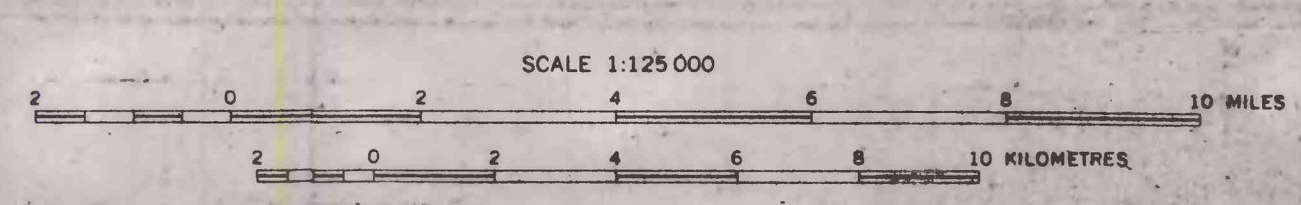


MAR 27 1975



33° 00'

32° 30'



Aeromagnetic survey flown and compiled
by U.S. Geological Survey. Flown at
1,000 ft. above ground, 1948.



PRELIMINARY AEROMAGNETIC MAP OF WEST-CENTRAL MISSISSIPPI

1975

This map is preliminary
and has not been edited
or reviewed for conformity
to Geological Survey.