

U. S. Geological Survey
 FILE NUMBER 55-171
 This report is preliminary and has
 not been edited or reviewed for
 conformity with Geological Survey
 standards or nomenclature.

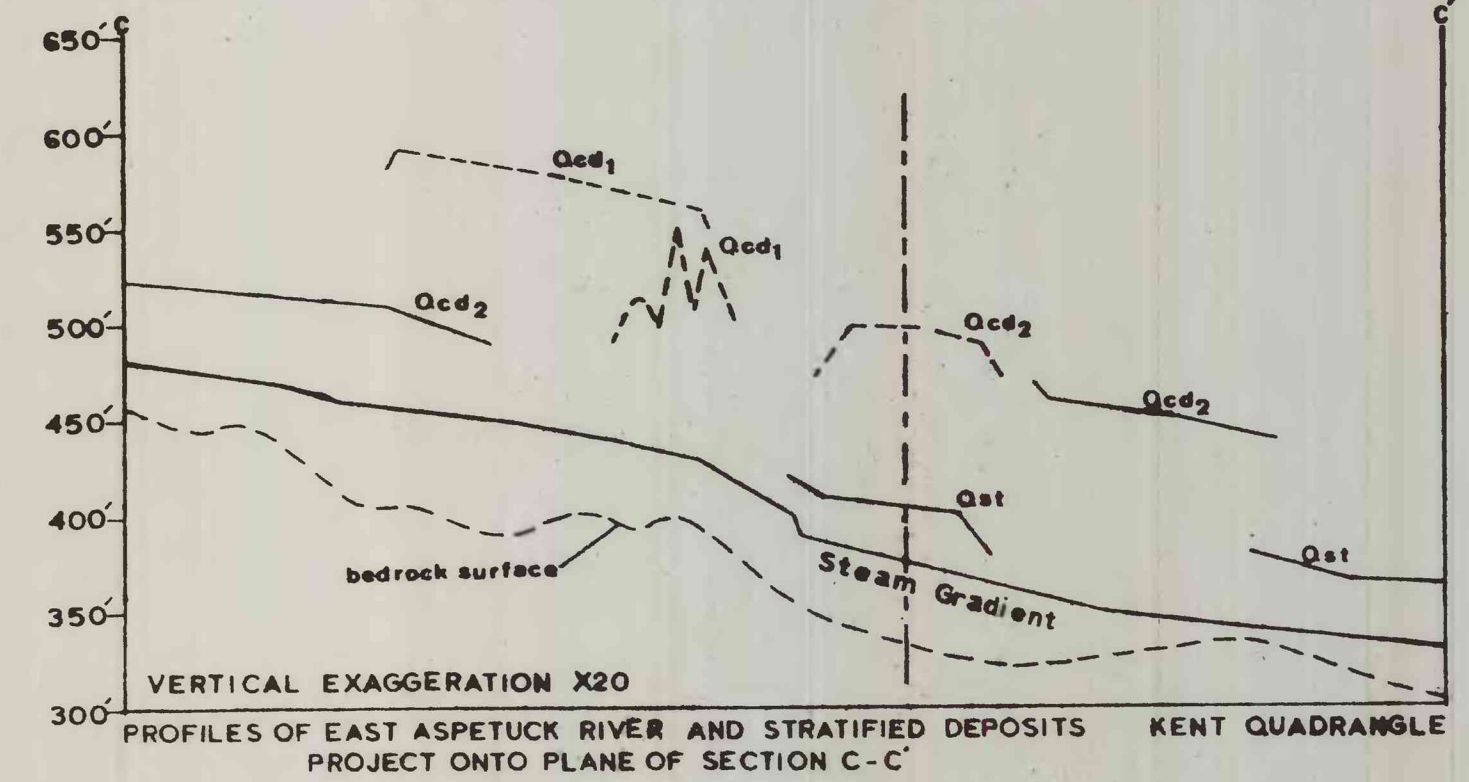
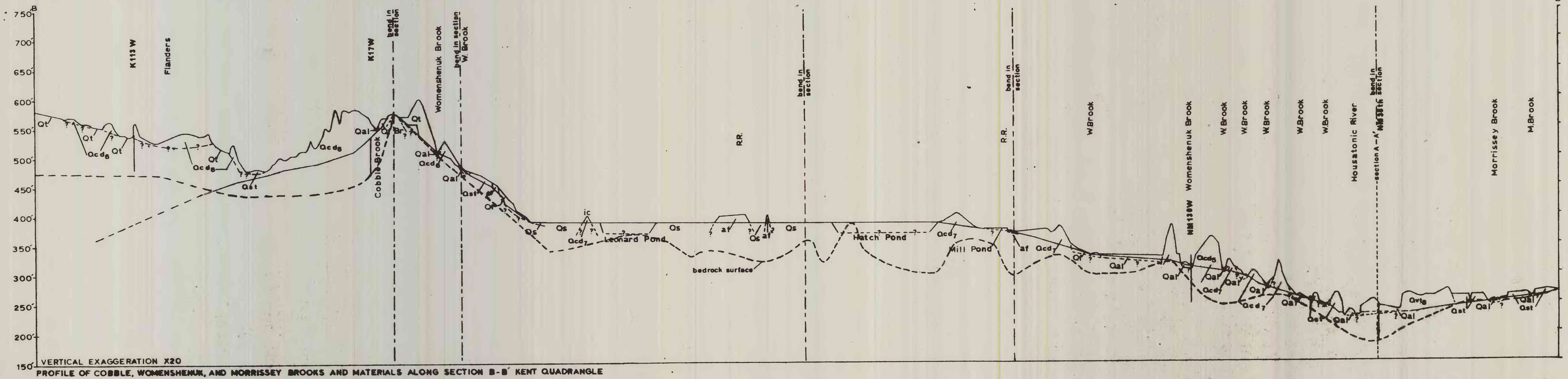
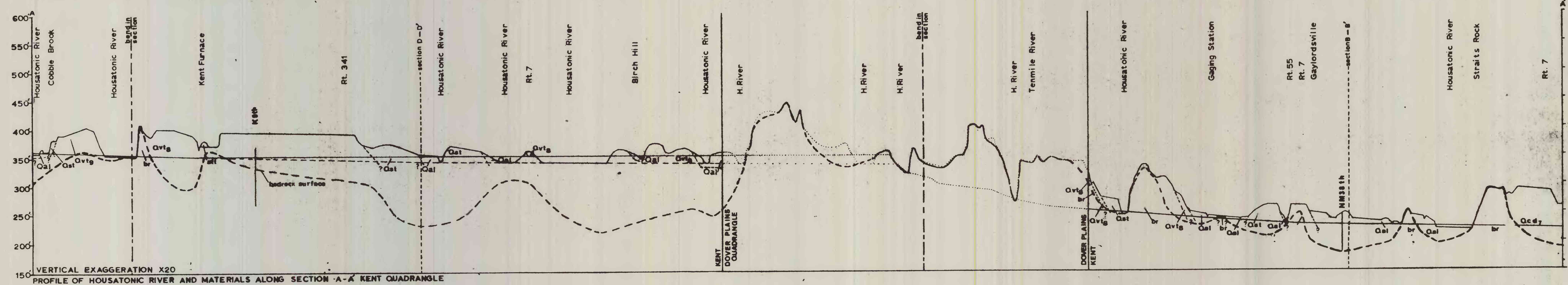
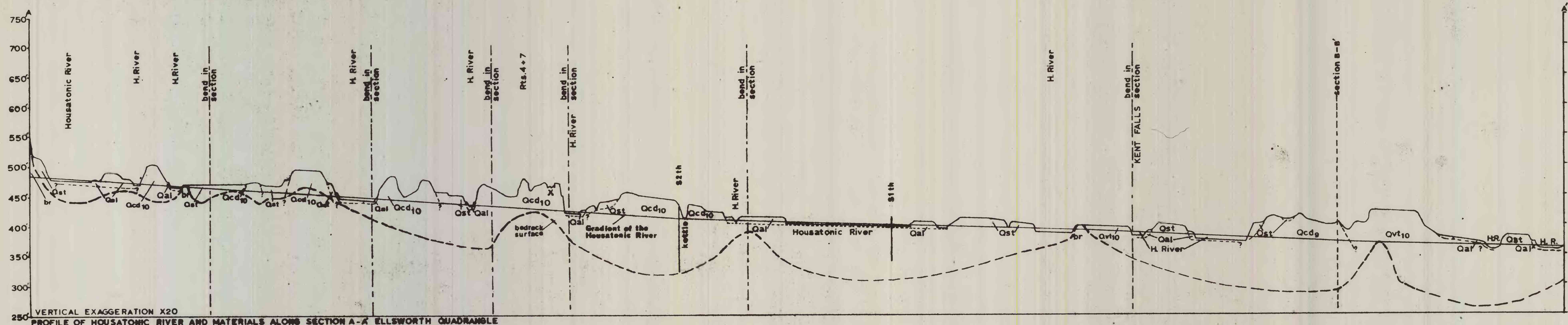


PLATE I-1A
 EXPLANATION

West East
 Projected profiles of deposits east and west of streams

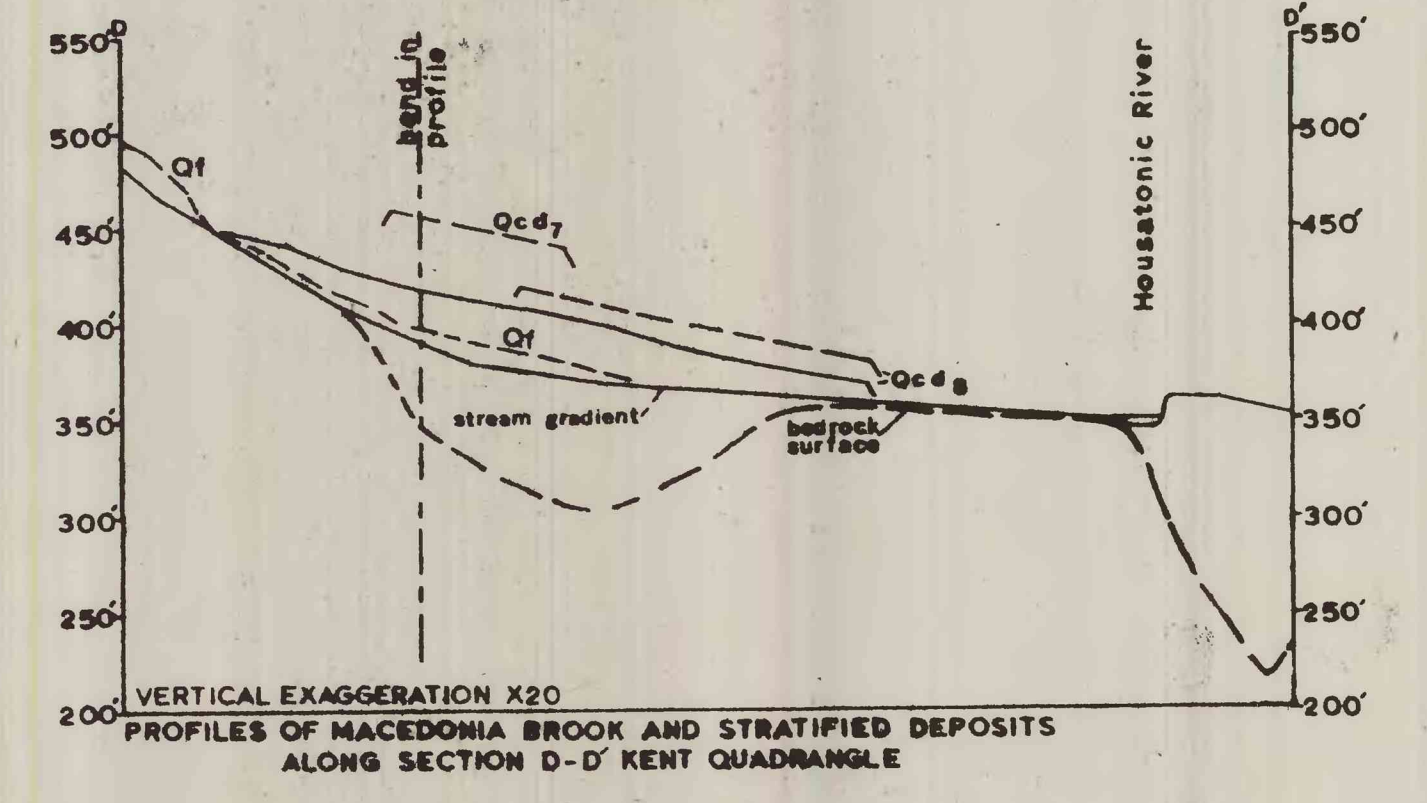
Scale
 0 miles 1

Approximate contact between materials. Queried where uncertain

Profiles in adjacent quadrangles

~~~~~  
 Melt-water channel

Ht  
 Hanging tributary



U. S. GEOLOGICAL SURVEY  
 RESTON, VA.  
 APR 24 1975  
 LIBRARY

PLATE I

Connecticut (Kent and Ellsworth quads). Surficial. 1:24,000. 1975.  
 Sheet 3  
 Cop. 1