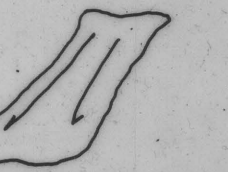


EXPLANATION

Note: see U.S. Geological Survey Misc. Field Studies Map MF-416 Preliminary photointerpretation map of landslides and other surficial deposits, of parts of the Los Gatos, Morgan Hill, Gilroy Hot Springs, Pacheco Pass, Queen Sabe, and Hollister 15 minute quadrangles, Santa Clara County, California, by Tor H. Nilsen, 1972 for a more detailed explanation of map symbols.



Landslide deposit
Arrows indicate general direction of downslope movement. Queried where uncertain.

Qal

Alluvial deposit

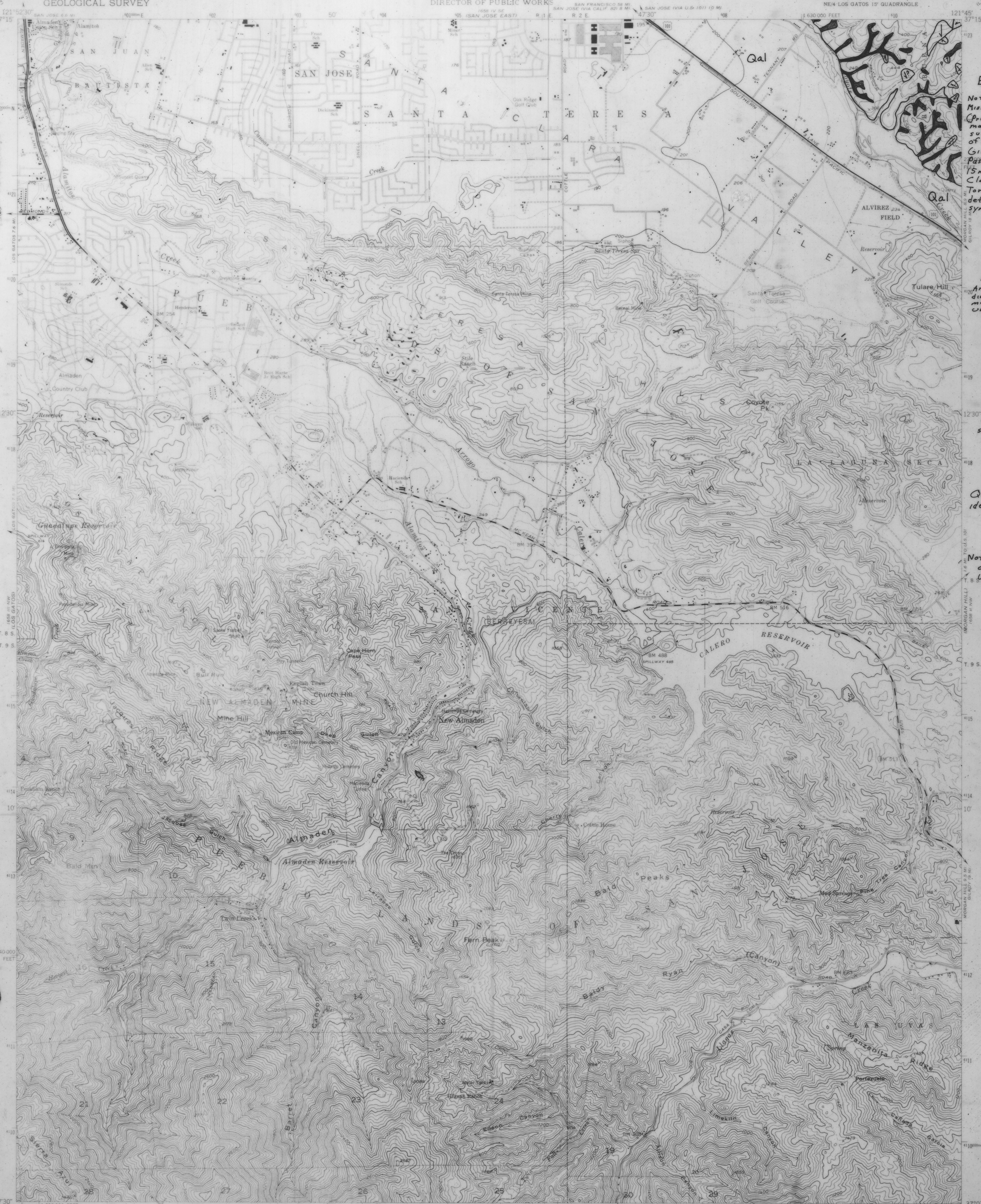


Colluvial deposit and/or small alluvial fan deposit



Bedrock
Queried where identification uncertain

Note: no mapping completed south-west of U.S. Highway 101.



U.S. GEOLOGICAL SURVEY
MERRILL PARK
JUN 21 1965
LIBRARY

REPRODUCTION
M12000
R290
no. 75-277
series 1
U.S. Geological Survey
Reports, Open file
series 1
SANTA TERESA

Mapped, edited, and published by the Geological Survey
Control by USGS, USCSGS, and DSCE
Topography from aerial photographs by multiple methods
and by plane-table surveys 1953. Aerial photographs taken 1948
Polyconic projection. 1927 North American datum
10,000-foot grid based on California coordinate system, zone 3
1000-meter Universal Transverse Mercator grid-ticks,
zone 10, shown in blue
Revisions shown in purple compiled from aerial photographs
taken 1968. This information not field checked
Purple tint indicates extension of urban areas
UTM GRID AND 1968 MAGNETIC NORTH
DECLINATION AT CENTER OF SHEET

SCALE 1:24,000

ROAD CLASSIFICATION
Heavy-duty Light-duty
Medium-duty Unimproved dirt
U.S. Route

SANTA TERESA HILLS, CALIF.
NE4 LOS GATOS 15' QUADRANGLE
N37075-W12145/75
1953
PHOTOREVISED 1968
AMS 1688 III NE-SERIES V895

PRELIMINARY PHOTOINTERPRETATION MAP OF LANDSLIDE AND OTHER SURFICIAL DEPOSITS OF PART
OF THE SANTA TERESA HILLS 7 1/2' QUADRANGLE, SANTA CLARA COUNTY, CALIFORNIA

by
Tor H. Nilsen
1975

THIS MAP IS PRELIMINARY AND
HAS NOT BEEN EDITED OR REVIEWED
FOR CONFORMITY WITH U.S.
GEOLOGICAL SURVEY STANDARDS
AND NOMENCLATURE