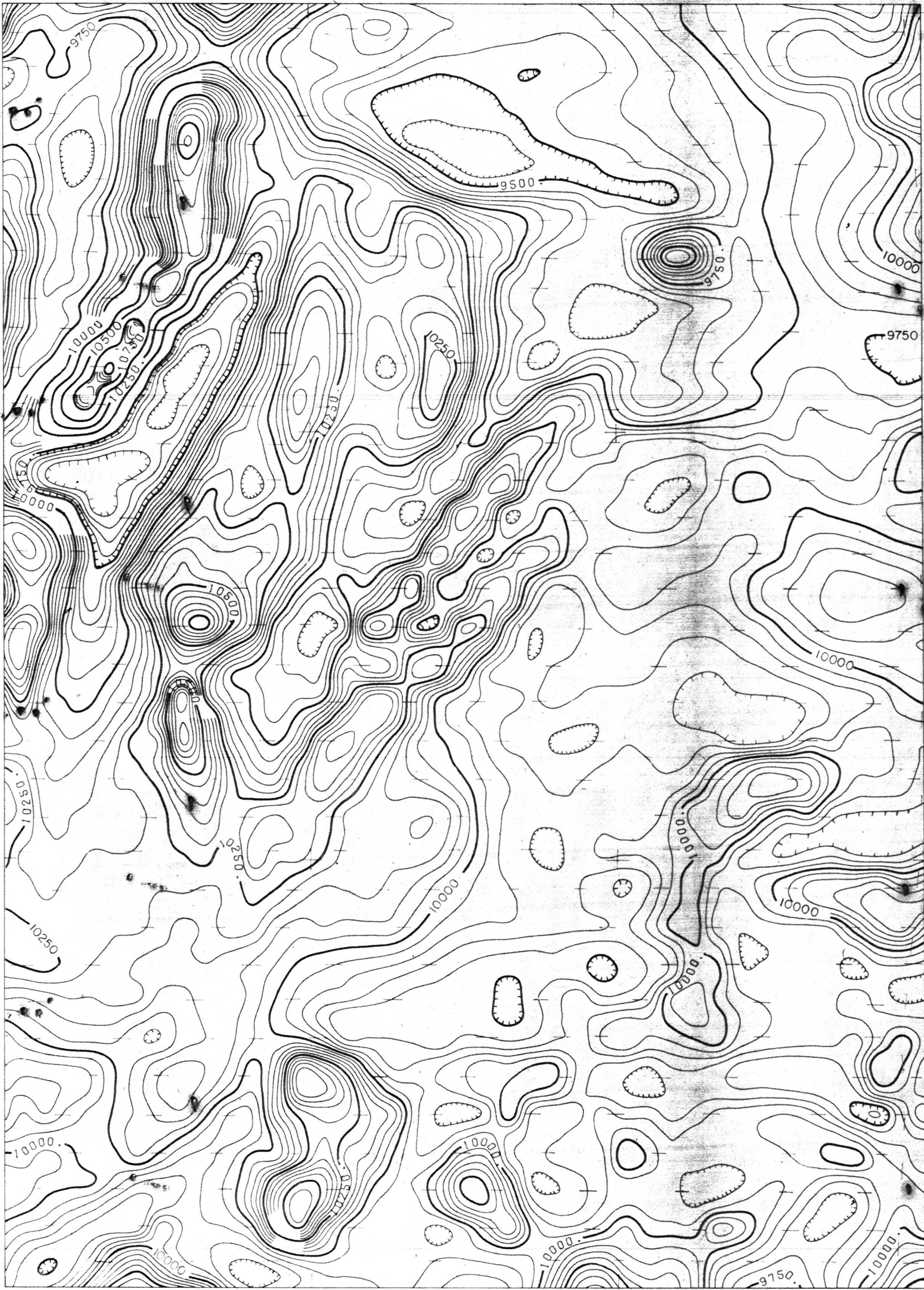


75° 15'
44° 45'

75° 00'
44° 45'



44° 30'
75° 15'

44° 30'
75° 00'

TOTAL FIELD CONTOURS
 50 GAMMA
 150 GAMMA
 FLIGHT LINE DIRECTION
 FLIGHT LINE SPACING
 FLIGHT ALTITUDE
 MAGNETOMETER AIRMAG MARK 30
 REGIONAL FIELD REMOVED 1987
 UPDATED TO 1974

U.S. Geological Survey
 OPEN FILE MAP 75-526
 This map is preliminary and has not
 been edited for conformity with
 Geological Survey standards or
 nomenclature.

SCALE 1:62,500

975

1000

1025

1050

AEROMAGNETIC SURVEY

OF
 OGDENSBURG, N.Y. AREA

FOR
 UNITED STATES GEOLOGICAL SURVEY

FLOWN 1974 BY AIRMAG SURVEYS, INC.
 COMPILED 1974/1975 BY LKB RESOURCES, INC.

Canton quadrangle, N.Y.

APPROXIMATE MEAN DECLINATION 1974
 INCLINATION OF FIELD 14.4° W
 APPROXIMATE TOTAL INTENSITY 56,000 GAMMAS

LIBRARY
 OCT 22 1975
 U.S. GEOLOGICAL SURVEY

SHEET NO 3

New York (Ogdensburg area). Aeromagnetic, 1:62,500, 1975.
 sheet 3
 cop. 2
 75-526 m