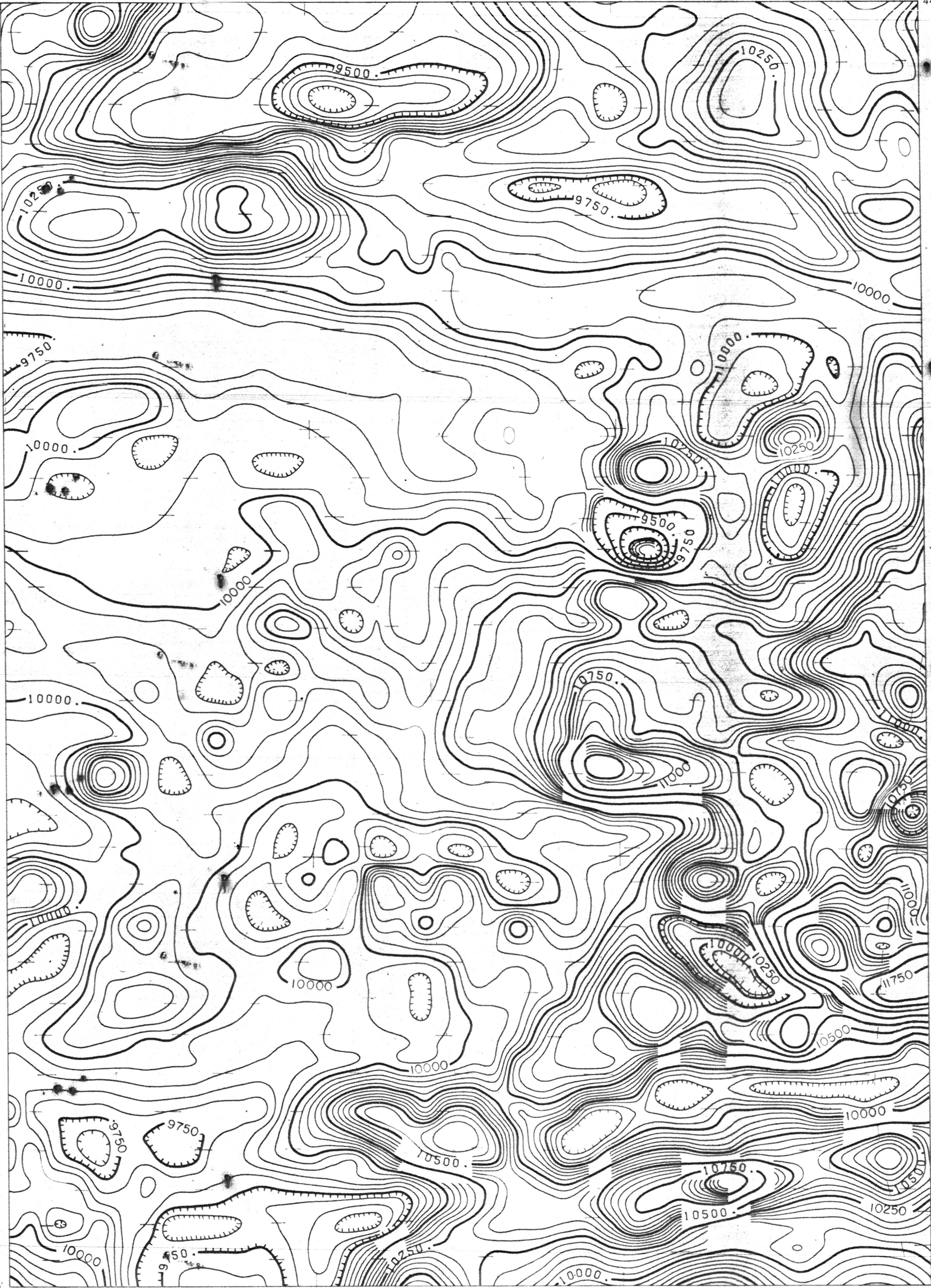


75° 00'
44° 45'

74° 45'
44° 45'

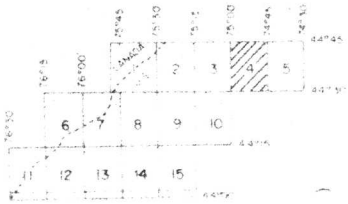


44° 30'
75° 00'

44° 30'
74° 45'

TOTAL FIELD CONTOURS
50 GAMMA
250 GAMMA
FLIGHT LINE DIRECTION
FLIGHT LINE SPACING
FLIGHT ALTITUDE
MAGNETOMETER AIRMAG MARK IZ
REGIONAL FIELD REMOVED IGRF 1965
UPDATED TO 1974

EAST-WEST



SCALE IN METERS

1 KILOMETER

AEROMAGNETIC SURVEY

OF

OGDENSBURG, N.Y. AREA

FOR

UNITED STATES GEOLOGICAL SURVEY

SHOWN 1974 BY AIRMAG SURVEYS, INC.

COMPILED 1974/1975 BY LKB RESOURCES, INC.

SHEET 4 OF 15

Potsdam quadrangle, N.Y.

U.S. Geological Survey
OPEN FILE MAP 75-526
This map is preliminary and has not
been edited for conformity with
Geological Survey standards or
nomenclature.

APPROXIMATE MEAN DECLINATION 1974
IN A PORTION OF FIELD DATA
APPROXIMATE TOTAL INTENSITY 500 GAMMA

New York (Ogdensburg area). Aeromagnetic. 1:62,500. 1975.
Sheet 4
Cop. 2
75-526m