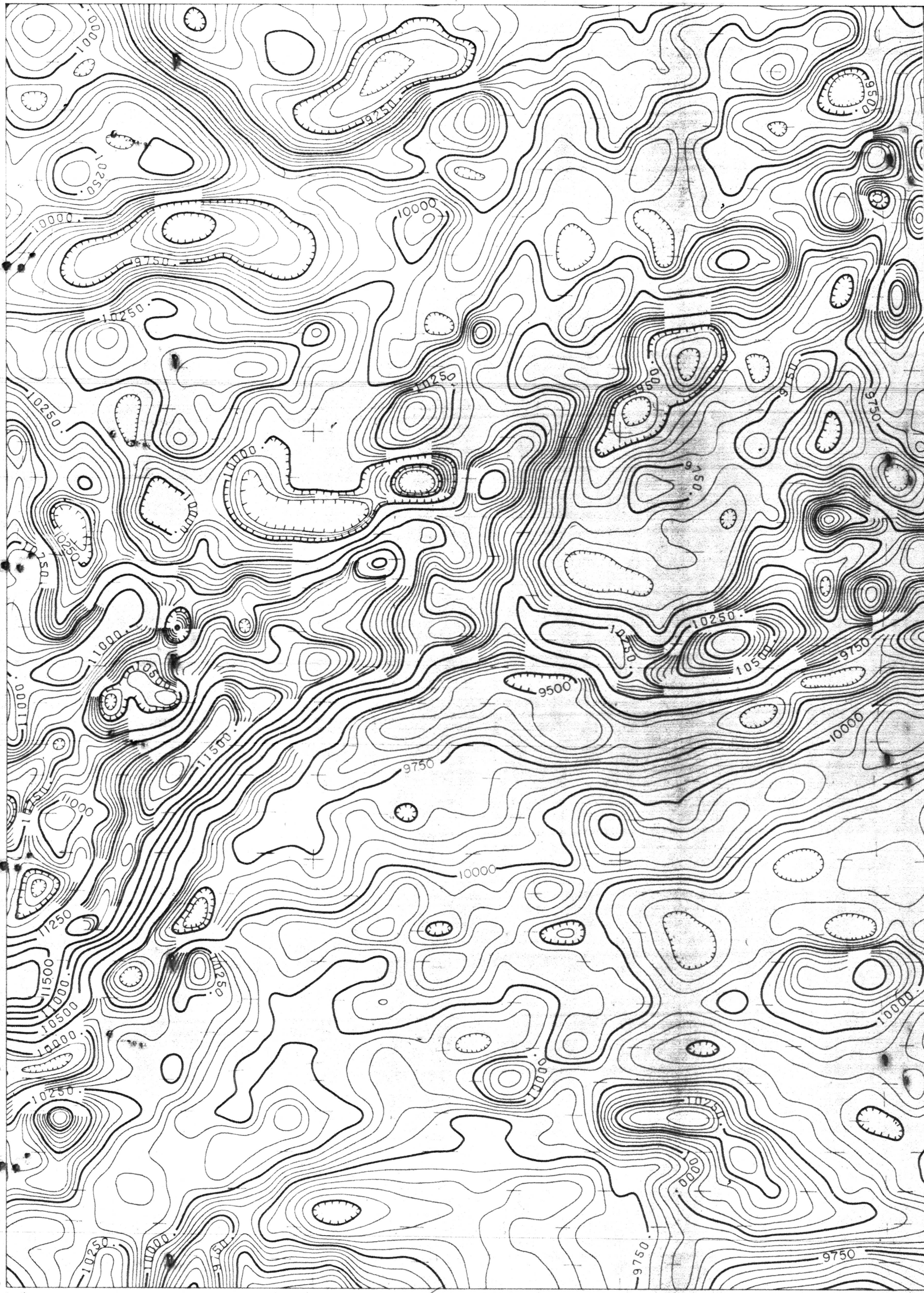


74° 45'  
44° 45'

74° 30'  
44° 45'



44° 30'  
74° 45'

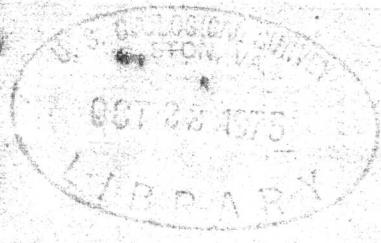
44° 30'  
74° 30'

TOTAL FIELD CONTOURS  
 50 GAMMA  
 PRO GAMMA  
 1/4 MILE DIRECTION  
 FLIGHT LINE SPACING  
 FLIGHT ALTITUDE  
 MAGNETOMETER & RMAG MARK II  
 REGIONAL FIELD REMOVED (GMT 1965)  
 PLOTTED 10/1974



SCALE 1:62,500  
 1/4 INCH = 1 MILE

AEROMAGNETIC SURVEY  
 OF  
 OGDENSBURG, N.Y. AREA  
 FOR  
 UNITED STATES GEOLOGICAL SURVEY  
 FLOWN 1974 BY AIRMAG SURVEYS, INC.  
 COMPILED 1974/1975 BY L.A.B. RESOURCES, INC.



U.S. Geological Survey  
 OPEN FILE MAP 75-526  
 This map is preliminary and has not  
 been edited for conformity with  
 Geological Survey standards or  
 nomenclature.

SHEET 5 OF 15  
 St. Regis quadrangle, N.Y.

*New York (Ogdensburg area). Aeromagnetic; 1:62,500. 1975.  
 sheet 5  
 cop. 2  
 75-526 m*