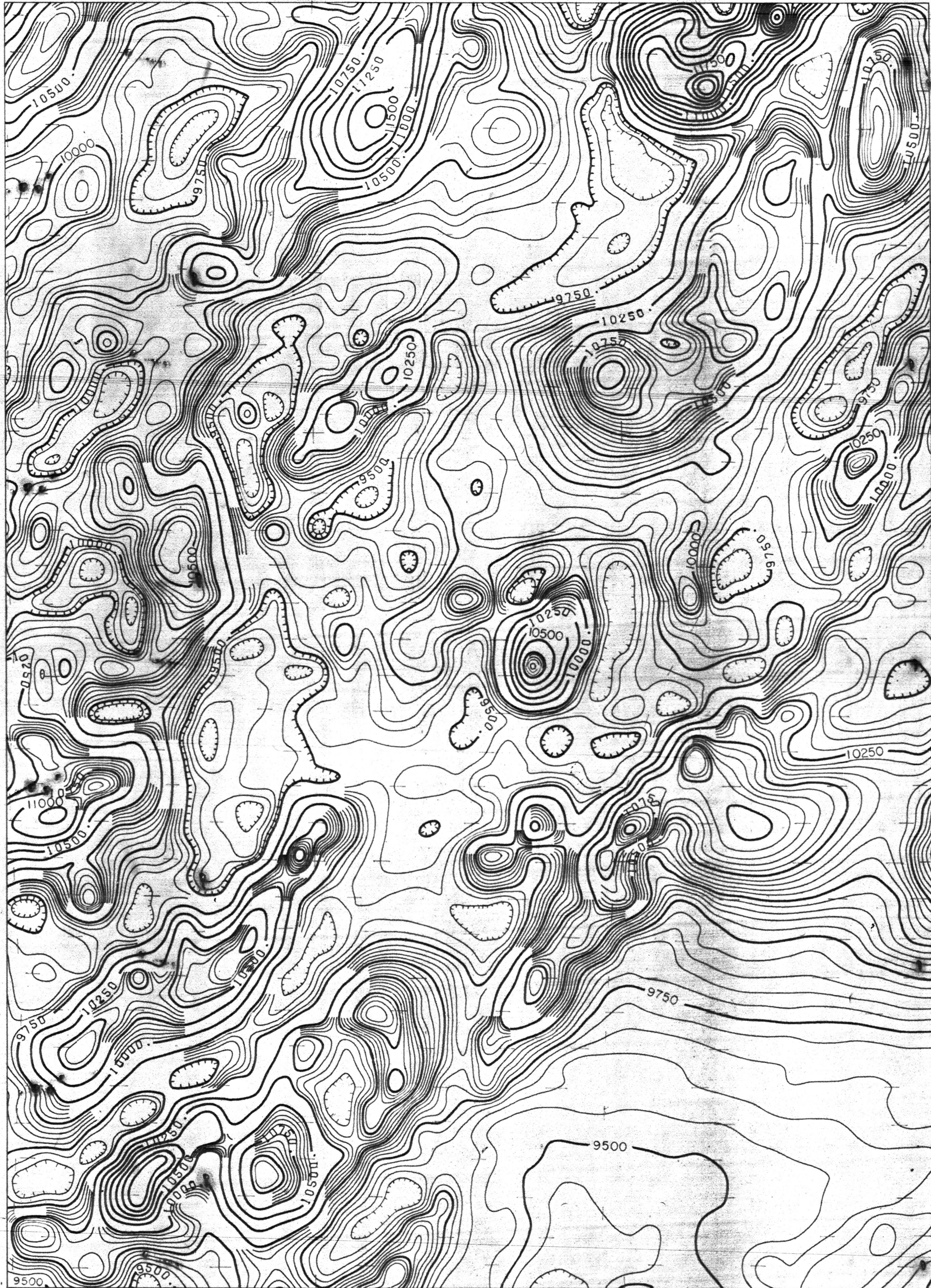


75° 45'
44° 30'

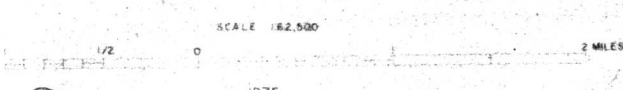
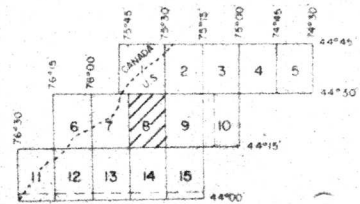
75° 30'
44° 30'



44° 15'
75° 45'

44° 15'
75° 30'

TOTAL FIELD CONTOURS
 50 GAMMA
 250 GAMMA
 FLIGHT LINE DIRECTION EAST-WEST
 FLIGHT LINE SPACING 1/2 MILE
 FLIGHT ALTITUDE 500' T.C.
 MAGNETOMETER: AIRMAG MARK IX
 REGIONAL FIELD REMOVED: IGRF 1965
 UPDATED TO 1974.

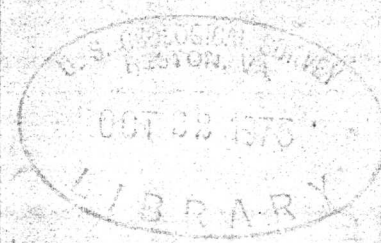


AEROMAGNETIC SURVEY
 OF
 OGDENSBURG, NY AREA
 FOR
 UNITED STATES GEOLOGICAL SURVEY

FLOWN 1974 BY AIRMAG SURVEYS INC.
 COMPILED FROM 1974/1975 DATA BY RESOURCES, INC.
 SHEET 8 OF 15
Hammond quadrangle, N.Y.

U.S. Geological Survey
 OPEN FILE MAP 75-526
 This map is preliminary and has not
 been edited for conformity with
 Geological Survey standards or
 nomenclature.

APPROXIMATE MEAN DECLINATION 1974
 INCLINATION OF FIELD 74.4°N
 APPROXIMATE TOTAL INTENSITY 50,000 GAMMA



New York (Ogdensburg area), Aeromagnetic, 1:62,500, 1975.
 sheet 8
 cap. 2
 75-526m