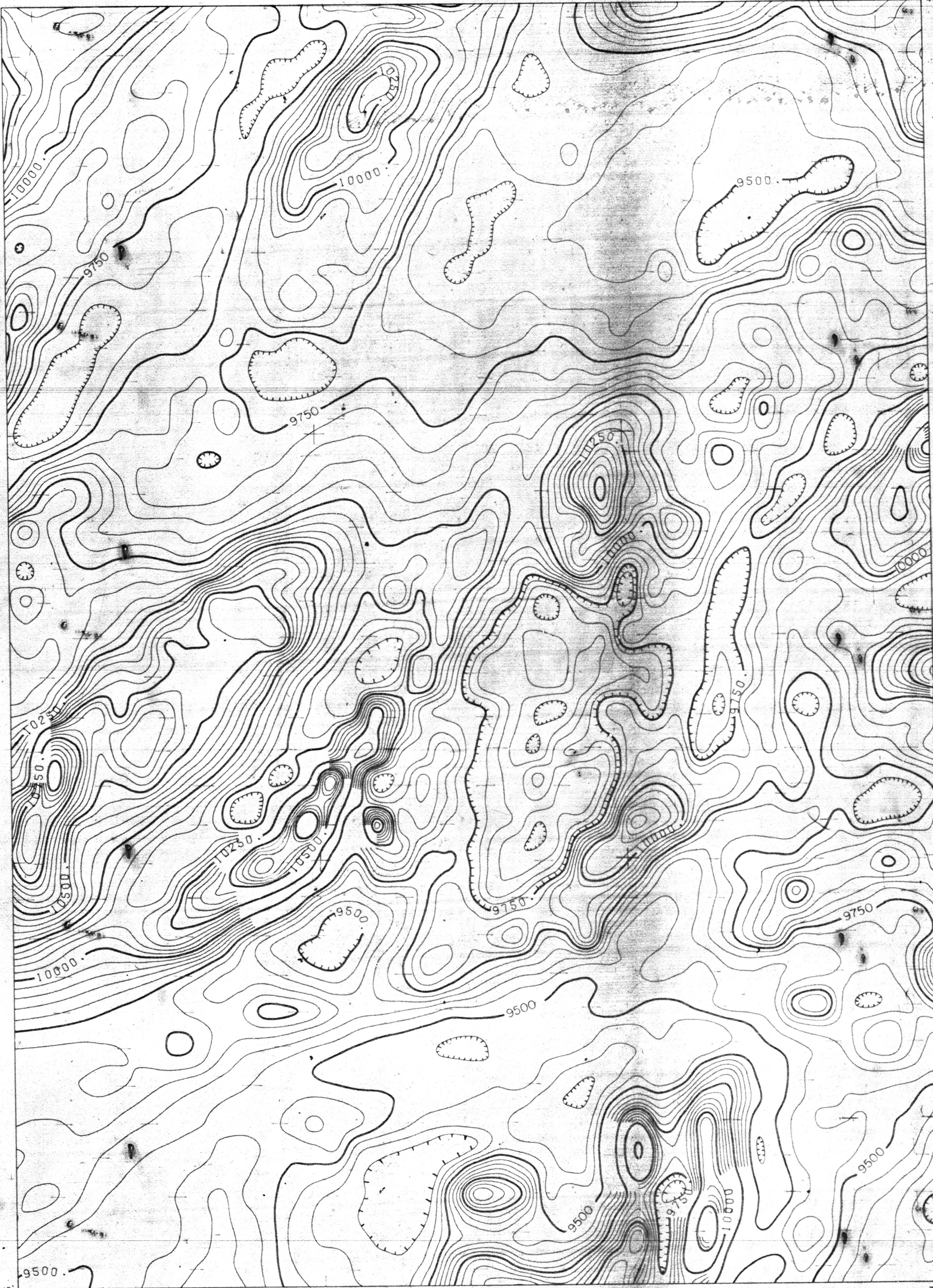


75° 30'
44° 30'

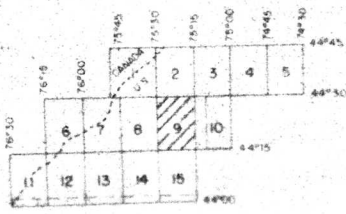
75° 15'
44° 30'



44° 15'
75° 30'

44° 15'
75° 15'

TOTAL FIELD CONTOURS
 50 GAMMA
 250 GAMMA
 FLIGHT LINE DIRECTION
 FLIGHT LINE SPACING
 FLIGHT ALTITUDE
 MAGNETOMETER: AIRMAG MARK III
 REGIONAL FIELD REMOVED: IGRF 1965
 UPDATED TO 1974



SCALE 1:62,500
 1975
 APPROXIMATE MEAN DECLINATION 1974
 ILLUMINATION OF FIELD TRAPS
 APPROXIMATE TOTAL INTENSITY 30,000 GAMMA

AEROMAGNETIC SURVEY
 OF
 OGDENSBURG, NY AREA
 FOR
 UNITED STATES GEOLOGICAL SURVEY

FLOWN 1974 BY AIRMAG SURVEYS, INC.
 COMPILED 1974/1975 BY G. B. REYNOLDS, INC.
 SHEET 9 OF 15
Gouverneur quadrangle, N.Y.

U.S. Geological Survey
OPEN FILE MAP 75-526
 This map is preliminary and has not
 been edited for conformity with
 Geological Survey standards or
 nomenclature.

New York (Ogdensburg area). Aeromagnetic, 1:62,500, 1975.
Sheet 9
cop. 2
 75-526 m